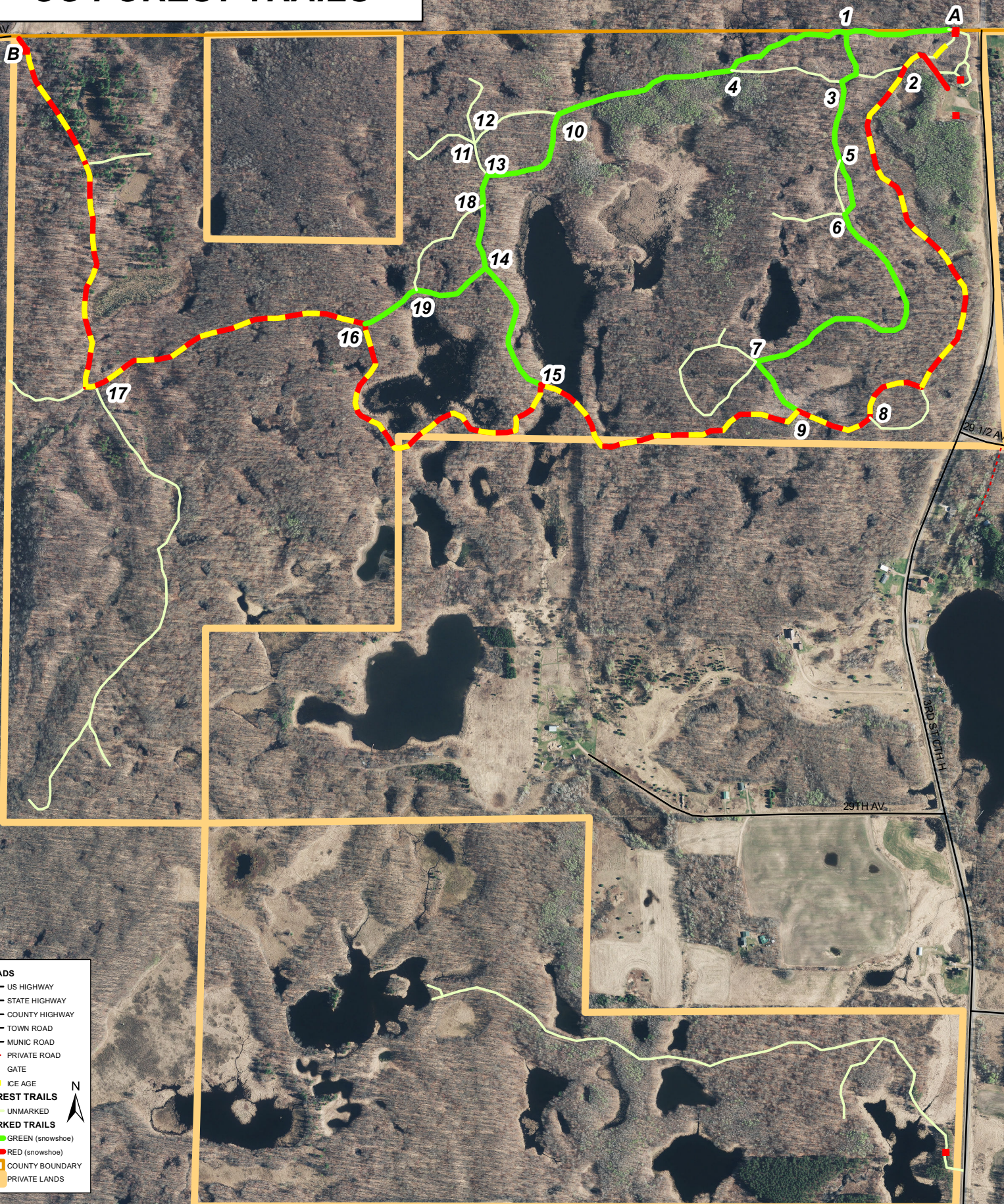


# WATERMAN LAKE AREA CO FOREST TRAILS

30TH AV



## ROADS

- US HIGHWAY
- STATE HIGHWAY
- COUNTY HIGHWAY
- TOWN ROAD
- MUNIC ROAD
- - - PRIVATE ROAD
- GATE

## FOREST TRAILS

- UNMARKED

## MARKED TRAILS

- GREEN (snowshoe)
- RED (snowshoe)
- COUNTY BOUNDARY
- PRIVATE LANDS



ALL COUNTY FOREST ROADS AND TRAILS ARE CLOSED TO MOTORIZED VEHICLE ACCESS WITH THE EXCEPTION OF THE 13TH ST ACCESS TO KELLY LAKE. ATV, SNOWMOBILE, AND HORSE TRAFFIC IS RESTRICTED TO DESIGNATED TRAILS.  
BARRON COUNTY FORESTRY & PARKS/REC  
MAP AS OF 01/24/19: BARRON COUNTY LAND INFORMATION

0 0.1 0.2 Miles