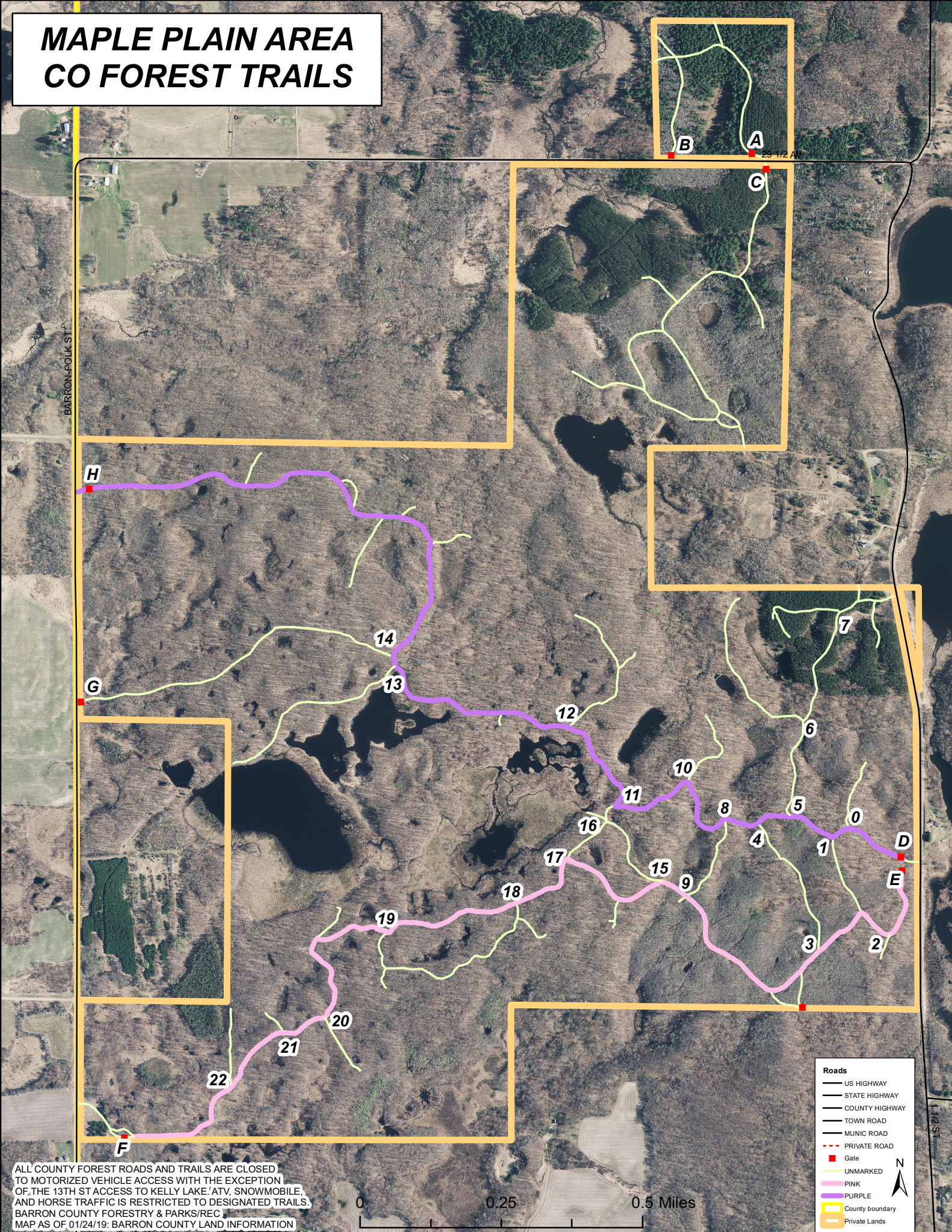


MAPLE PLAIN AREA CO FOREST TRAILS



ALL COUNTY FOREST ROADS AND TRAILS ARE CLOSED TO MOTORIZED VEHICLE ACCESS WITH THE EXCEPTION OF THE 13TH ST ACCESS TO KELLY LAKE. ATV, SNOWMOBILE, AND HORSE TRAFFIC IS RESTRICTED TO DESIGNATED TRAILS. BARRON COUNTY FORESTRY & PARKS/REC MAP AS OF 01/24/19: BARRON COUNTY LAND INFORMATION

Roads

- US HIGHWAY
- STATE HIGHWAY
- COUNTY HIGHWAY
- TOWN ROAD
- MUNIC ROAD
- PRIVATE ROAD

Gate

Trail

- UNMARKED
- PINK
- PURPLE

County boundary

Private Lands

Scale

0 0.25 0.5 Miles

North Arrow

N