



BARRON COUNTY DEPARTMENT OF HEALTH & HUMAN SERVICES

Annual
Report

2022



COVID-19 volunteer recognition banquet August, 2022



**BARRON COUNTY DEPARTMENT OF
HEALTH & HUMAN SERVICES**

335 East Monroe Avenue, Room 338
Barron, WI 54812
715-537-5691





BARRON COUNTY PUBLIC HEALTH

Mission

*Promoting, protecting, and preserving health
through partnerships with people and communities*

Vision

Everyone living better, longer

Guiding Values

- *We work to ensure health equity*
 - *We promote trauma informed practices internally and externally*
 - *We use collaborative processes to achieve our vision and mission*
- *We lead the community in the use of evidence based public health practices*
 - *We improve programming through quality improvement*
 - *We provide an environment of professional growth and satisfaction*

Programs

- Communicable Disease Prevention and Control
- Rabies Prevention
- Immunizations
- Birth to Three Program
- Maternal Child Health
- Women, Infants and Children (WIC)
- Reproductive Health Services
- Environmental Health Services
- Community Health Promotion
- Refugee Health Services
- Emergency Preparedness
- Car Seat Program
- Community Sharps Disposal

2022 Public Health Staff

DHHS Director

Stacey Frolik

Public Health Program Manager

Laura Sauve

Nursing Staff

Becky Rundhaug

Beth Wood (Resigned February 2022)

Nicole Nelson

Patricia Wickman (January 2022)

Karla Potts-Shufelt (February 2022)

Environmental Health

Mackenzie Benda

Rachel Henke

Pam Gannon (December 2022)

Taylor Myers (transferred out December 2022)

Administrative Staff

Sue Pruzek

Brownie Nelson

Women Infants & Children (WIC)

Nichole Thompson, Director

Rhonda Siefert

Savannah Wright- Lactation Peer Educator

Mariah Munger-Lactation Peer Educator

Birth to Three

Joyce Pond

Stephanie Hinrichs

Public Health Specialist

Sarah Turner

Community Health Workers

Maria Frisinger

Isaak Mohammed

Rosa Rodriguez



In Memory of Rod Olson

June 2, 1947-November 4, 2022

Dr. Rod Olson served our community for more than 40 years. He selflessly continued to help his community and public health during the COVID-19 pandemic despite his own health concerns. Thank you Dr. Olson, you are missed by your community.

Medical Advisor

Dr. Richard Sampson, Mayo Clinic Health System-Northland, became public health's volunteer medical advisor in June 2020



Staff

Public Health Staff Celebrate National Influenza Vaccination Week

The 2022 Public Health Annual report is organized using the 10 essential public health services plus management and governance. These areas align with the 12 domains the Public Health Accreditation Board endorses. The essential public health services are recognized as public health services that all communities should provide.

Essential Service #1: Monitor Health

Monitor health status to identify and solve community health problems

Community Health Assessment: Public Health, along with community partners and residents reassessed our 2018 Community Health Assessment in 2021 through an affirmation survey. The survey showed the community still felt the top three health priorities are Substance Use, Mental Health & Chronic Disease. Public Health continues to collaborate with our health care providers, community organizations, and individuals to improve conditions surrounding these issues. Community health improvement planning meetings were held with partners in 2022 to come to consensus on how to respond to these health needs. *Thrive Barron County: Growing Together in Health* is the name of this collaborative process.



Barron County's Top 3 Health Priorities



Substance Use



Mental Health



**Chronic Disease Prevention
and Management**

Quantitative and qualitative data identified the health priorities. This included comprehensive secondary data collection and a community affirmation survey.

Essential Service #2: INVESTIGATE

Diagnose and investigate health problems and health hazards in the

Barron County Public Health investigates health and environmental hazards every day. Public health uses the Wisconsin Electronic Disease Surveillance System (WEDSS). This system allows public health to obtain suspect and confirmed diseases via an electronic database. We also partner with community members, schools, and long-term care facilities to share concerns about suspect and known communicable disease cases and outbreaks.

Confirmed and Probable Communicable Diseases

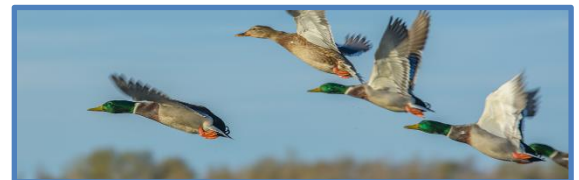
DISEASE	2018 Data	2019 Data	2020 Data	2021 Data	2022 Data
Lyme Disease	10	20	26	0	6
Ehrlichiosis/Anaplasmosis	10	10	7	9	8
Babesiosis	3	0	2	1	1
DISEASE	2018 Data	2019 Data	2020 Data	2021 Data	2022 Data
Blastomycosis	1	1	-	1	2
Campylobacter	23	29	17	23	29
Carbapenemase- producing carbapenem-resistant Enterobacteriaceae (CP-CRE)	1	0	0	0	0
Carbon Monoxide Poisoning	1	5	5	11	4
Cryptosporidiosis	17	8	7	8	9
Cyclosporiasis	2	3	2	2	1
E-Coli Shiga Toxin Producing (STEC)	10	8	5	5	6
E-Coli Enteropathogenic (EPEC)	12	4	11	28	28

DISEASE	2018 Data	2019 Data	2020 Data	2021 Data	2022 Data
E-Coli Enterotoxigenic (ETEC)	3	1	1	6	7
Giardiasis	5	9	11	9	7
Hepatitis C	1-acute 16- chronic	0-acute 14-chronic	1-acute 12-chronic	0-acute 9-chronic	1-acute 5-chronic
Hepatitis E	1	0	0	0	0
Histoplasmosis	-	-	-	-	1
Legionellosis	1	3	1	2	2
Malaria	1	0	0	0	0
Methemoglobinemia	1	0	0	0	0
Methicillin-or Oxicillin Resistant S. Aureus (MRSA/ORSA)	1	1	0	0	0
Mycobacterial Disease (Non- Tuberculosis)	6	1	5	7	9
Parapertusis	1	0	0	0	0
Salmonella	8	13	4	8	17
Shigellosis	1	0	0	1	1
Streptococcal Disease, Invasive Group A and Group B	8	8	1	7	5
Latent Tuberculosis Infections	31	18	8	16	6
Toxoplasmosis	0	0	4	3	3
Tuberculosis	2	1	2	2	0
Vibrosis, Non-Cholera	-	-	-	-	1
West Nile Virus	0	0	0	0	0
Yersiniosis	-	-	-	-	3

Sexually Transmitted Infections	2018 Data	2019 Data	2020 Data	2021 Data	2022 Data
Chlamydia Trachomatis	126	107	99	121	89
Syphilis	1-primary 1-latent 1-early non primary/non secondary	2-late 3-early non primary/non secondary	3-unknown duration or late	1-secondary 1-unknown duration or late	2-early non primary/non secondary 1-unknown duration or late 4-secondary
Gonorrhea	25	22	19	28	19
Vaccine Preventable Disease	2018 Data	2019 Data	2020 Data	2021 Data	2022 Data
Pertussis	10	0	2	0	0
Varicella	2	3	2	0	2
Streptococcus Pneumoniae	5	4	2	2	4
Haemophilus Influenzae	2	2	1	1	0
Hepatitis B	5-chronic	3-chronic	1-chronic	0	2-chronic
Influenza Associated Hospitalizations	77	26	48	8	25
Coronavirus (COVID-19) Vaccines became available starting in December 2020	-	-	4,759	6,002	5,218

2022 Highly Pathogenic Avian Influenza Outbreak

In April and May of 2022, seven farms were infected with highly pathogenic avian influenza (HPAI). Six farms raised turkeys for commercial purposes. One farm was a backyard flock of mixed bird types. In total 254,397 birds were depopulated. Public health monitored the health of 126 people who had contact with the infected farms for signs and symptom of illness for 10 days after their last exposure to the infected birds.

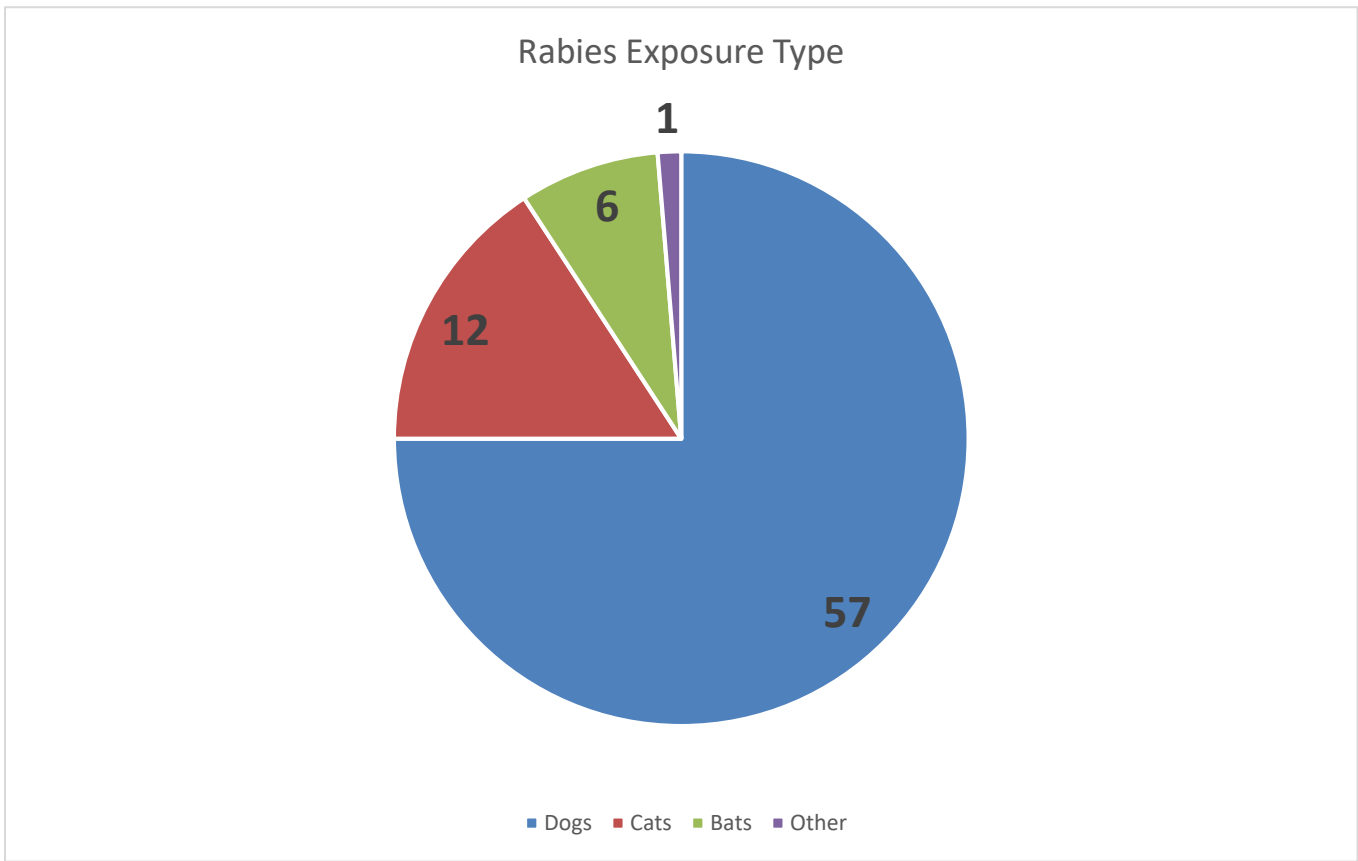


Human Health Hazard Control: Public health investigates complaints subject to the provision of the County Human Health Hazard ordinance. Goals are to protect the health of the public from illness and disease caused by human health hazards.



- 15 Health hazard complaints investigated in 2022
 - Investigations included housing, garbage accumulation, hoarding, septic issues, pests/vermin, unsanitary conditions

Rabies Prevention: Public Health works with area hospitals, veterinarians, and our animal control officer to investigate and monitor animal contacts that could transmit rabies. Seventy six animal exposures were reported to Barron County Public Health in 2022.



Essential Service #3: INFORM AND EDUCATE

Inform, educate, and empower people about health issues

In 2022, Barron County Public Health used social media, local newspaper, and radio as well as our partner's networks to bring important information to the community. Our three outreach workers helped us reach the Somali and Spanish communities in the most culturally and linguistically appropriate ways. Information regarding the pandemic and other public health services was sent out in English, Somali and Spanish.

Weekly reports were sent out and posted to social media.

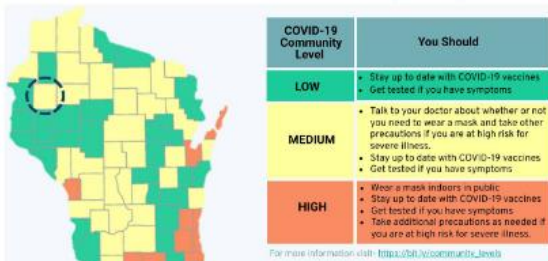
Barron County COVID-19 WEEKLY REPORT



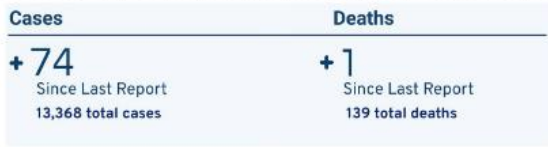
COVID-19 Community Level

COVID-19 Community Levels are a new tool to help communities decide what prevention steps to take based on the latest data. Levels can be low, medium, or high and are determined by looking at **hospital beds being used, hospital admissions, and the total number of new COVID-19 cases** in an area. Take precautions to protect yourself and others from COVID-19 based on the COVID-19 Community Level in your area.

*These recommendations DO NOT APPLY IN HEALTHCARE SETTINGS such as hospitals and nursing homes.



*People may choose to mask at any time. People with symptoms, a positive test, or exposure to COVID-19 should wear a mask.



Pruebas de COVID-19 Sin gastos de bolsillo

Prueba de PCR nasal poco profunda
Resultados dentro de 1-2 días después de recibir la muestra en el laboratorio

Obtenga una cita en cur.tv/barron

410 E LaSalle Ave.
Suite B
Barron, WI

Lunes - Viernes • 8 am - 4 pm

Busque un sitio de pruebas cerca de usted en curative.com

COVID-19 updates for our Somali Community members. 38 weeks ago. 417 views

COVID-19 updates for our Spanish speaking community members. 41 weeks ago. 470 views

COVID-19 update for our Somali community members. 43 weeks ago. 846 views

COVID-19 and community updates for our Somali community members. 45 weeks ago. 585 views

COVID-19 updates for our Somali community members. 49 weeks ago. 784 views

COVID-19 updates for our Spanish speaking community members. 49 weeks ago. 655 views

Videos and information were posted to social media from our Spanish and Somali Outreach workers helped communicate up to date information on the pandemic.

Essential Service #4: COMMUNITY ENGAGEMENT

Mobilize community partnerships and action to identify and solve health problems

Partnerships

Barron County Public Health programs partner with multiple groups and organizations to share resources and address community health issues.

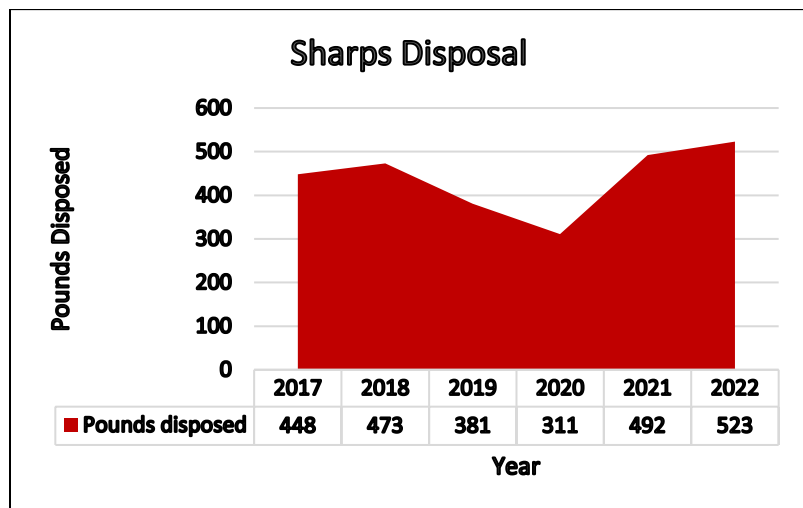
Thrive Barron County

Thrive Barron County is a unique partnership that has been collaborating on health solutions since 2011. Thrive focuses on the top health concerns identified by the community through the Community Health Assessment. Our current priorities are: Substance Use, Mental Health, and Chronic Disease Prevention & Management.



Sharps Disposal

Public health offers residents safe disposal of needles, lancets, and other bio-hazardous sharps. Pick up your red container today!





Community Connections to Prosperity is a coalition working to create an understanding of how poverty impacts our community. Public Health is an active member of the coalition. A highlight of 2022 includes the first of its kind Community Connections Conference that featured programs proven to be successful and teach skills on how to best advocate for issues in local communities. Attendees heard from communities that have implemented innovative programs and projects to create meaningful change and walked away with skills and ideas on how to put their ideas into action and make a difference in their own community.

The Barron County Community Coalition; *Where Community & Collaboration Grow* is a network of businesses, organizations and community members working together to create healthier and safer communities in Barron County. The Coalition works to bring community partners to the same table and implements youth substance use prevention efforts. Public Health provides resources and staff time to implement coalition objectives. Highlights of 2022 include the Community Conversation events. These four events, spread out over the year, were hosted by the coalition to draw in new community members and agencies and gain buy in and support of the initiatives. An average of 40 new members attended each conversation and worked to complete action plans on the community's top needs.



Western Wisconsin Public Health Readiness Consortia (WWPHRC)

The Western Wisconsin Public Health Readiness Consortia is a regional consortia consisting of 17 local public health agencies and two tribal health agencies. The purpose of the consortia is to work together to develop local capacity to effectively respond to all types of health emergencies including bioterrorism, infectious disease outbreaks, and natural disasters. Time was spent in 2022 evaluating our regional COVID response and creating after action reports with actions to improve response. The Consortium worked together to advocate for state resources around COVID testing and vaccination, created shared messaging, and updated preparedness plans.

Essential Service #5: POLICIES AND PLANS

Develop policies and plans that support individual and community health efforts

2022-2025 Community Health Improvement Plan

- 1) Substance Use
- 2) Mental Health
- 3) Chronic Disease Prevention & Management

Substance Use



Public Health continues to work with partners and the Barron County Community Coalition to reduce youth substance use, decrease methamphetamine use, and reduce youth and adult tobacco use in Barron County. A sample of 2022 activities included the training of two officers in the Prime for Life program (an alternative sanction for underage drinking) and the promotion of the Narcan Direct program to address a recent spike in overdose deaths in the county.

Mental Health



QPR stands for Question, Persuade, and Refer. People trained in Question, Persuade, Refer learn how to recognize the warning signs of a suicide crisis and how to question, persuade, and refer someone to help. In 2022, our facilitator was able to train 76 community members. In addition, two public health staff members were trained in Youth Mental Health First Aide and held a no cost workshop in August for adults who work with youth.

Chronic Disease Prevention & Management



Thanks to a partnership between the UW-Extension Barron County Food Wise Program, Barron County Department of Health and Human Services, and Country Lane Farmer's Market and Pantry supported by donations from Mayo Clinic Health System and Cupboard and Closet, a new program was started this year to increase access to fresh fruit and vegetables. People can now use Quest/EBT benefits, as well as debit or credit cards, and turn them into tokens to purchase foods at Country Lane Famer's Market. This has helped increase access to fresh fruits and vegetables for many in Barron County.

Essential Service #6: PUBLIC HEALTH LAWS

Enforce laws and regulations that protect health and ensure safety

Wisconsin state statutes and county ordinances are written to protect the public. Public health professionals are tasked to enforce laws that protect the public's health.

DNR Well Water Program: Public health is an agent for the Department of Natural Resources to inspect and sample transient non-community wells. The program requires annual testing for bacteria and nitrates for any well that has public access to water for at least 25 people a day and 60 days of the year.

Outcomes:

- All 160 Transient non-community wells were sampled
- 43 Sanitary surveys (well inspections) were completed
- 11 quarterly/monthly bacteria samples taken
- 117 annual site visits completed
- 17 follow up samples (in response to positive samples)



Rachel Henke

Environmental Health Specialist

Taylor Myers

Environmental Health-Administrative Assistant

Mackenzie Benda

Environmental Health Specialist

Department of Ag, Trade & Consumer Protection & Department of Safety & Professional Services

Agent Program: Barron County is an agent for the Department of Ag, Trade & Consumer Protection to license and inspect retail food outlets, restaurants, hotels, motels, swimming pools, campgrounds, bed and breakfasts, tourist rooming houses, and the Department of Safety and Professional Services to license and inspect tattoo and body piercing establishments. Eight facility complaints were investigated in 2022.

Facility Type	# Facilities	# Routine Inspections	# Pre-Inspections	# Re-Inspections/Follow Up
Retail Food Establishment	386	221	49	192
Body Art Facilities	7	2	0	2
Campgrounds	52	43	8	17
Hotels/Motels/TRHs	189	131	52	91
Public Swimming Pools	26	19	1	10
Rec Ed Camps	3	3	0	0

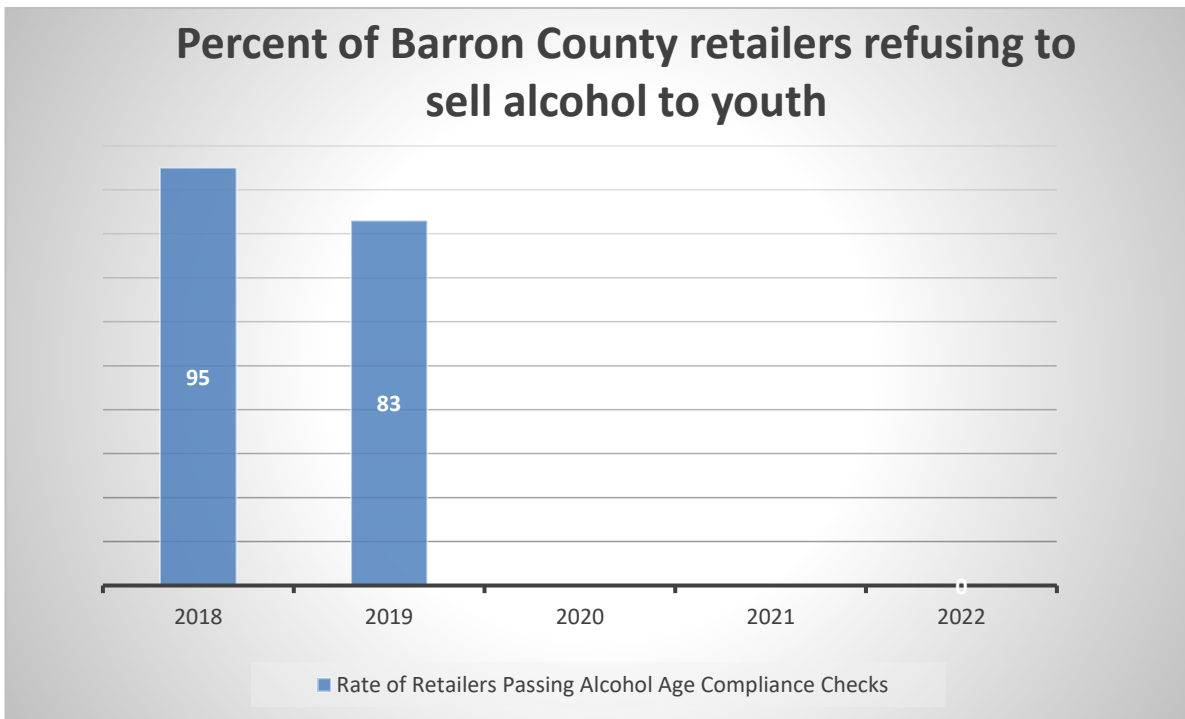
- **Total Inspections (Routine, Pre-Inspection, Follow Up, Re-Inspection, Etc.)= 883**



Tobacco Compliance Checks: WI Wins uses positive reinforcement to reduce illegal tobacco sales to minors. It congratulates local clerks who do not sell tobacco to youth, while educating those who would. In 2022, youth volunteers used their legal identification to attempt to purchase nicotine products at 44 retailers. Four of them sold tobacco to youth under 18. (Due to COVID-19, WINS checks were not done in 2020/2021.)



Alcohol Age Compliance Checks: Due to COVID-19 alcohol compliance checks were not conducted in 2020 or 2021. Data for 2022 alcohol age compliance checks is pending.



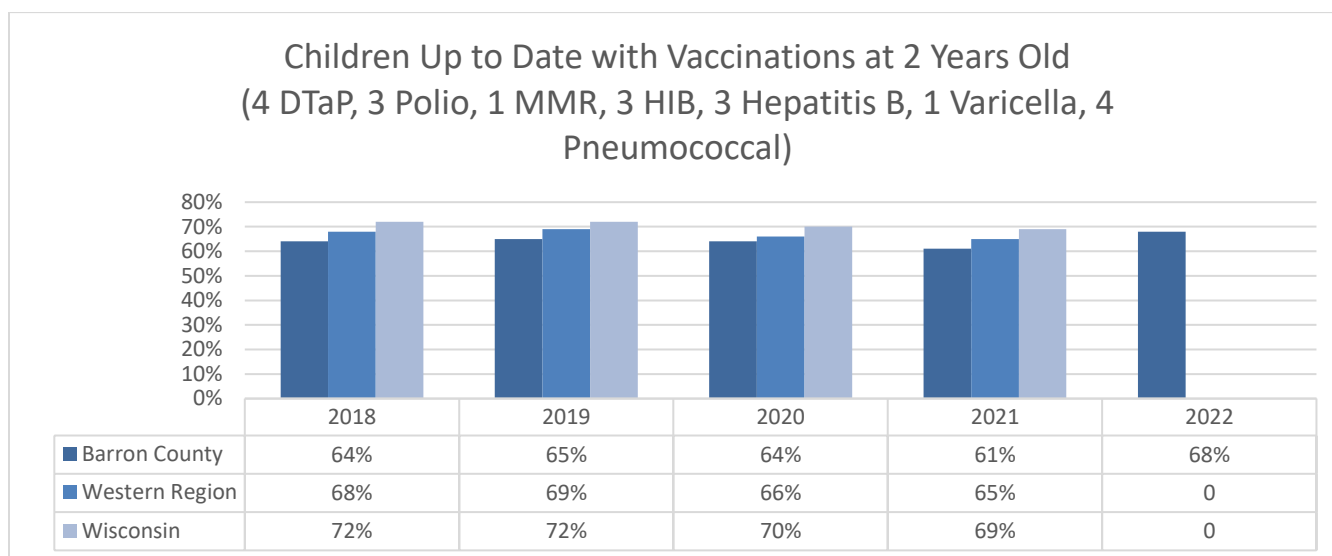
Essential Service #7: ACCESS TO CARE

Promote strategies to improve access to health care services

Immunization Program: Immunizations are one of the most important public health victories. Barron County Public Health provides no cost vaccinations to qualifying children and adults through the Vaccines for Children and Vaccines for Adults program. Public Health currently stocks vaccines for: COVID-19, Diphtheria, Haemophilus influenzae type b (HIB), Hepatitis A, Hepatitis B, Human Papillomavirus (HPV), Influenza (Flu), Measles, Meningococcal disease, Mumps, Pertussis (Whooping Cough), Polio, Rotavirus, Rubella, Streptococcus pneumoniae, Tetanus, and Varicella (Chicken Pox).

Childhood Vaccinations

A common measure of childhood vaccine coverage is the percent of two year olds up to date on recommended vaccinations. State and Western Region 2022 data is unavailable at this time.



School-Based Influenza Clinics: Influenza vaccinations are offered free of charge at each school during a 30-day period in October and November each year. These clinics are an important component of influenza prevention and are an emergency preparedness practice activity. The events allow public health to practice mass distribution in preparation for a public health emergency.

2022 School Based Influenza Vaccination Clinics						
	2022 Number Vaccinated	2022 Total School Enrollment	2022 Percent Vaccinated by PH	2021 Percent Vaccinated by PH	2020 Percent Vaccinated by PH	2019 Percent Vaccinated by PH
TOTAL	512	7206	7%	8%	13%	12%

COVID-19 Vaccinations:

Public Health administered 2,302 doses of COVID-19 vaccines. The vaccines were offered at multiple sites throughout 2022:

- Walk in clinics at the Government Center, UWEC-BC, area schools, and the public health office
- Long term care facilities, community based residential facilities, and assisted living centers
- Baron County Jail
- In-home vaccinations for those unable to travel to a clinic

Healthy Beginnings +

Healthy Beginnings +: Services for Medicaid eligible pregnant women with high risk for adverse pregnancy outcomes. Healthy Beginnings + provides services to reduce medical and non-medical factors that contribute to the psychosocial, behavioral, environmental and nutritional factors of high-risk pregnant women. **Eighteen** pregnant women received case management services through the program in 2022.



Reproductive Health Services

The reproductive health program works to decrease the number of unintended pregnancies and sexually transmitted infections through reproductive health education and direct services. We provide low or no cost sexually transmitted infection testing, reproductive health clinical services, and we assist community members in signing up for Medicaid programs, including Family Planning Only Services. In 2022, we provided care for **138 women** and **90 men**. This is an increase from the year prior. During the year, RHS nurses were able to start providing presentations on family planning in the schools again, dedicate an office for client visits, and start promoting services at county events.

Birth to 3 Program

The Birth to 3 Program is Wisconsin’s early intervention program for infants and toddlers with developmental delays or disabilities and their families. A federal law, The Individuals with Disabilities Education Act, provides a framework for a comprehensive program for coordinating developmental, health and social services within the family’s community. The Wisconsin Department of Health Services oversees the Birth to 3 Program in Wisconsin.

Year	# New Referrals	# Declined/ Family Unreachable after multiple attempts	# Newly Enrolled	# Screened Out/ Not Eligible	# Referred to schools for continued services at age 3	Total Families Served in the Year
2022	111	39	72	11	38	167
2021	153	56	83	14	29	139
2020	115	55	48	12	22	101
2019	158	61	59	38	25	126
2018	137	57	47	33	44	126

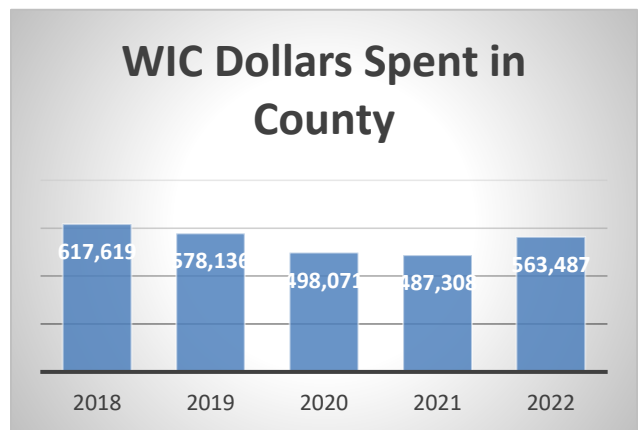
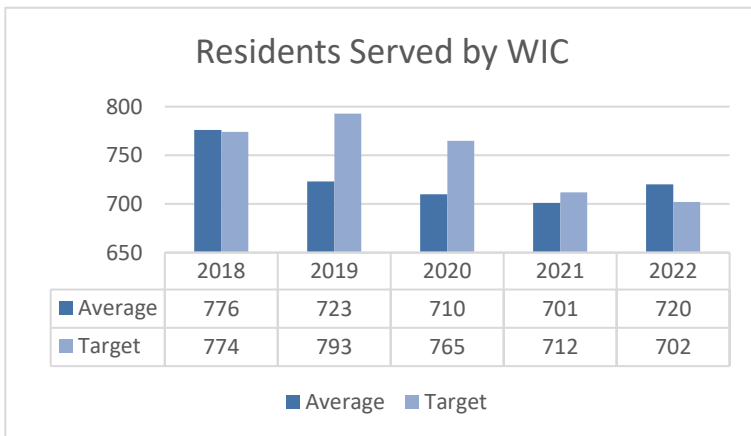
WIC (Women, Infants, & Children)

WIC provides nutrition education, breastfeeding education and support, supplemental nutritious foods, and connections to other community services for pregnant and breastfeeding women, infants, and children less than 5 years of age. The Barron County WIC program is also able to provide additional breastfeeding support, by offering breastfeeding education and support through the Breastfeeding Peer Counselor program. The Breastfeeding Peer Counselor is a mother from the community with personal breastfeeding experience that can relate to other breastfeeding mothers and who is trained to assist other mothers on their breastfeeding journey by providing on going breastfeeding education and support.

In 2022, there was an increase in WIC dollars spent in Barron County. Additionally WIC was able to enhance the benefits of the families enrolled in WIC by increasing the fruit and vegetable cash value benefit. Children went from \$9/month to \$25/month and pregnant, postpartum, and breastfeeding women went from \$11/month to at least \$44-\$49/month. WIC continues to provide additional funds to families to purchase fresh, locally grown produce at local farmer’s markets each summer through the Farmer’s Market Nutrition Program. There was also an increase in FMNP monies spent in 2022.

The WIC program faced a unique challenge in 2022 related to a large scale recall of WIC’s contract formula Similac as well as a formula shortage across many substitute brands. Many WIC families struggled to find formula to feed their babies. In Wisconsin, the State WIC program was able to obtain contract waivers that allowed the program to offer over 100 alternative non-contract formula options for WIC families to purchase using their WIC benefits.

WIC continues to receive the Fit Families grant, which works with 25 families to provide enhanced services to help to reduce childhood obesity.



Essential Service #8: WORKFORCE

Assure competent public and personal health care workforce

2022 Students

Public health works closely colleges and universities to provide observation and project based learning for nursing, medical and other health profession students. In 2022, we hosted students from UW Eau Claire, Northwood Technical College, and Grand Canyon University. Exposure to public health programs often leads to future careers in public health.

1-UWEC Student

21-Northwood Technical College Students

1-Grand Canyon University Student



We Care Barron County

We Care is a statewide initiative to bring awareness and educate community members on the caregiver crisis. Public Health joined the Aging and Disability Resource Center and several other care providers to actively work to recruit and retain caregivers in our community. In Wisconsin one in four caregiver positions are currently unfilled.

Essential Service #9: PERFORMANCE MANAGEMENT AND QUALITY IMPROVEMENT

Evaluate effectiveness, accessibility, and quality of personal and population-based health services

Qualitative Data Grant

Public health applied for and received a Wisconsin Department of Health Services grant to gather input from diverse populations on ideas and barriers for health improvement. This information will be used to help us improve health outcomes for those in our community who experience the disproportionate impact of health inequities. The \$35,000 grant will run from 6/1/2022 to 5/31/2024.

Maternal Child Health Grant-Public health received a two year grant to work with our residents of Somali descent. The goal of the grant is to train and empower two community health workers to work with Somali women to connect them to resources to improve the health of their families. The grant also seeks to improve early childhood learning and school readiness. This project is funded by the Wisconsin Partnership Program at the University of Wisconsin School of Medicine and Public Health. The \$150,000 grant will run from 11/1/2022 to 10/31/2024.

140 Review- The Wisconsin Department of Health Services is required to formally review the operations of all Wisconsin Local Health Departments every five years. The review establishes the health department as a level I, II, or III agency. A level I agency meets the minimum requirements and a level III meets the maximum requirements established for local health departments. Due to the pandemic, Barron County DHHS-Public Health Programs completed an abbreviated 140 review in 2020 and was approved as a level II agency. Public Health will undergo a full 140 review in 2023.

After Action Reports (AAR) AAR's are documents that record what went well and what needs to be improved when an extraordinary action is taken. The documents help us learn how to improve for future events. In 2022, Public Health participated in three after action reports in response to the COVID-19 pandemic. Public health also completed an AAR for its influenza vaccination clinics.

Essential Service # 10: Evidence based practices

Research for new insights and innovative solutions to health problems

Most programs public health offers are evidence based. From substance use prevention, to food inspections, to immunizations, scientific evidence guides what we do and promote. Below are some of the programs public health helps provide to our community.

Living Well with Diabetes is an evidence based program hosted by the Barron County Aging and Disability Resource Center (ADRC). One of our public health registered dietitians, who also works in the WIC program, partners with the ADRC to help facilitate this course.

Question, Persuade, Refer (QPR) sessions were held virtually and in person. This program trained 76 community members to recognize the signs someone may be considering suicide, how to talk to them about what they see, and how to help them access professional care.

Youth Mental Health First Aid (YMHFA) is an evidence based program that teaches participants how to identify, understand and respond to signs of mental health and substance use challenges among children and adolescents ages 12-18. Two public health staff were trained in the program in July and taught a class to school and community participants in August 2022.

MANAGEMENT & GOVERNANCE

Maintain administrative and management capacity & maintain capacity to engage the public health governing entity

Barron County Health & Human Services Board

The Barron County Health & Human Services Board is made up of elected members and appointed community members and meets on the 4th Monday of each month at 9:30 am in the Barron County Government Center. Due to the pandemic a virtual option was added to board meetings.

2022 Board Members:

Karolyn Bartlett- Chair, County Board Representative

John Banks - Vice Chair, County Board Representative

Carol Moen-Executive Representative, County Board Representative

Randy Albrecht- Citizen Representative

Patti Anderson, County Board Representative

Jerry Apfel, Citizen Member

Robert Heil, Citizen Member

Toniann Knutson, RN,- Citizen Member

Lynn Kolpack, Citizen Member

Richard Sampson, MD, Citizen Member

Diane Vaughn, County Board Representative

Stacey Wenzel, County Board Representative

COVID-19 RESPONSE

COVID Overview

- First Case Reported in Wisconsin- February 5, 2020
- State Safer at Home Order issued- March 24, 2020
- First COVID-19 case reported in Barron County- April 1, 2020
- First Death in Barron County- June 29, 2020
- Pfizer and Moderna COVID Vaccinations receive Emergency Use Authorization (EUA) in December 2020
- Johnson & Johnson COVID-19 vaccine receive EUA in February of 2021
- Barron County Public Health held its first COVID-19 vaccination clinic on 01/21/21
- Public Health, with community volunteers, administered 10,837 doses of COVID-19 vaccines in 2021.
- More than 40 working and retired physicians, nurses, EMT's, paramedics, and others volunteered their time to help vaccinate our community.
- On August 31, 2022 Pfizer and Moderna bivalent vaccine booster doses received Emergency Use Authorization.
- On October 19, 2022 Novavax received Emergency Use Authorization as a 4th COVID-19 vaccine.
- 2,302 doses of COVID-19 vaccinations were administered by Barron County Public Health in 2022.

2022 COVID-19 Data

Total COVID-19 cases- 5,460 Confirmed, probable and suspect cases reported to public health

Total COVID-19 related deaths- 32

COVID-19 Community Outreach Workers-1-Somali, 2-Spanish

LTE part time contract staff employed for COVID-19 response – 10

Communication

- Weekly reports posted to social media and send to local media
- Press releases sent out – 40
- Information videos made- 30 (multiple languages)

Barron County held regular meetings with regional health departments, long-term care facilities, schools, healthcare systems and the state throughout 2022.

For questions or comments on the Public Health Programs Report please contact Laura Sauve, Public Health Program Manager at 715-537-6109 or laura.sauve@co.barron.wi.us