

BARRON COUNTY BICYCLE & PEDESTRIAN PLAN

ADVISORY COMMITTEE KICKOFF MEETING



AGENDA

WELCOME!

PLEASE BE SURE TO SIGN IN
AND GRAB A PACKET IF YOU
DO NOT HAVE ONE!

- **Introduction**
- **Roles & Responsibilities**
- **Planning Process**
- **Existing Plans**
- **Existing Facilities**
- **Vision, Goals & Objectives**
- **Next Steps & Questions**

INTRODUCTION

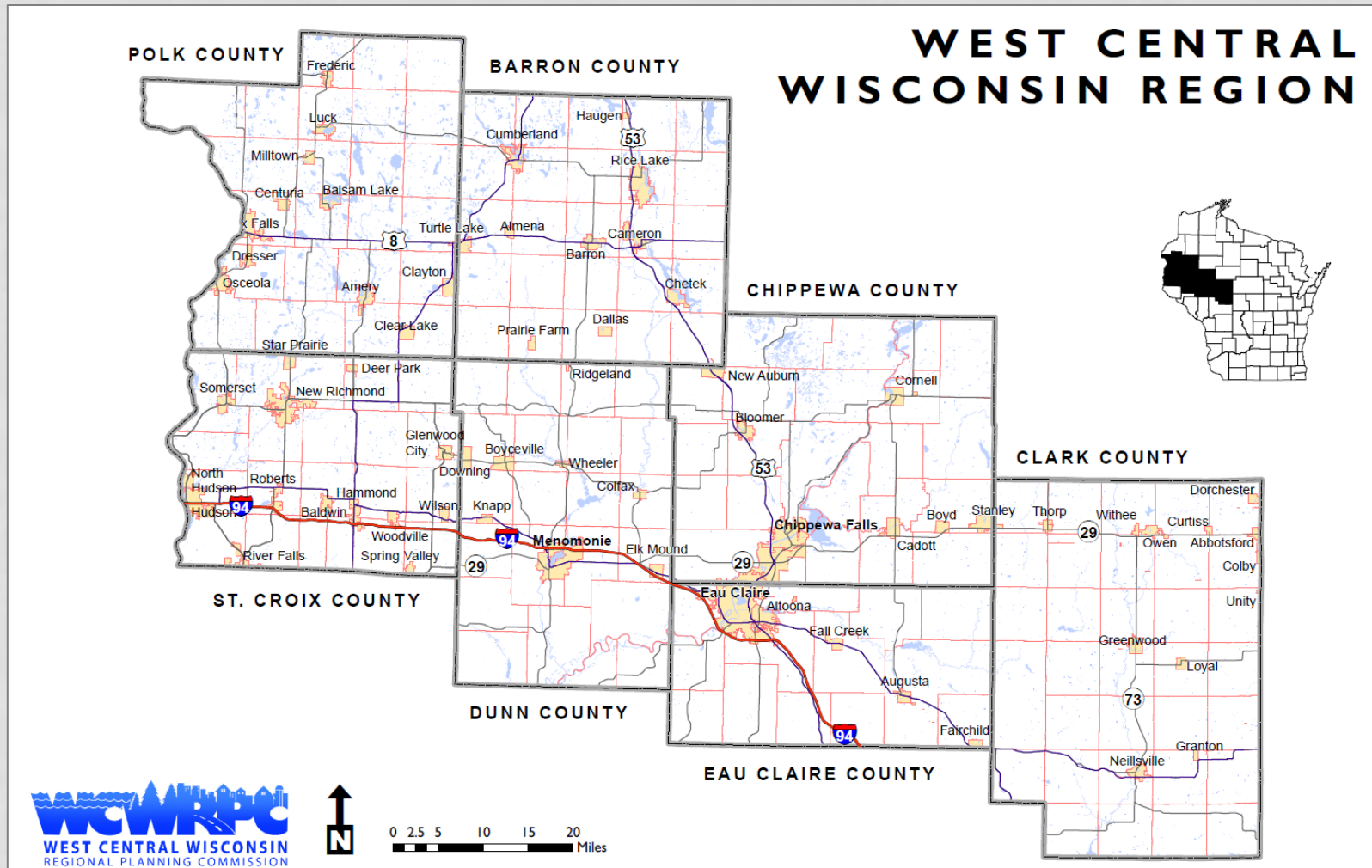
STAFF, WCWRPC, THE COMMISSION & THE PROJECT

INTRODUCTION – ROSS PIETRZAK



- Senior Planner, WCWRPC
- Master of Urban & Regional Planning – Ball State University
- 8 yrs. of municipal planning exp.
- 2.5 yrs. of regional planning exp.
- 2012-14 – Region-3A (NE IN)
- 2015-18 – City of Carmel, IN
- 2018-23 – City of Hobart, IN

INTRODUCTION – WCWRPC



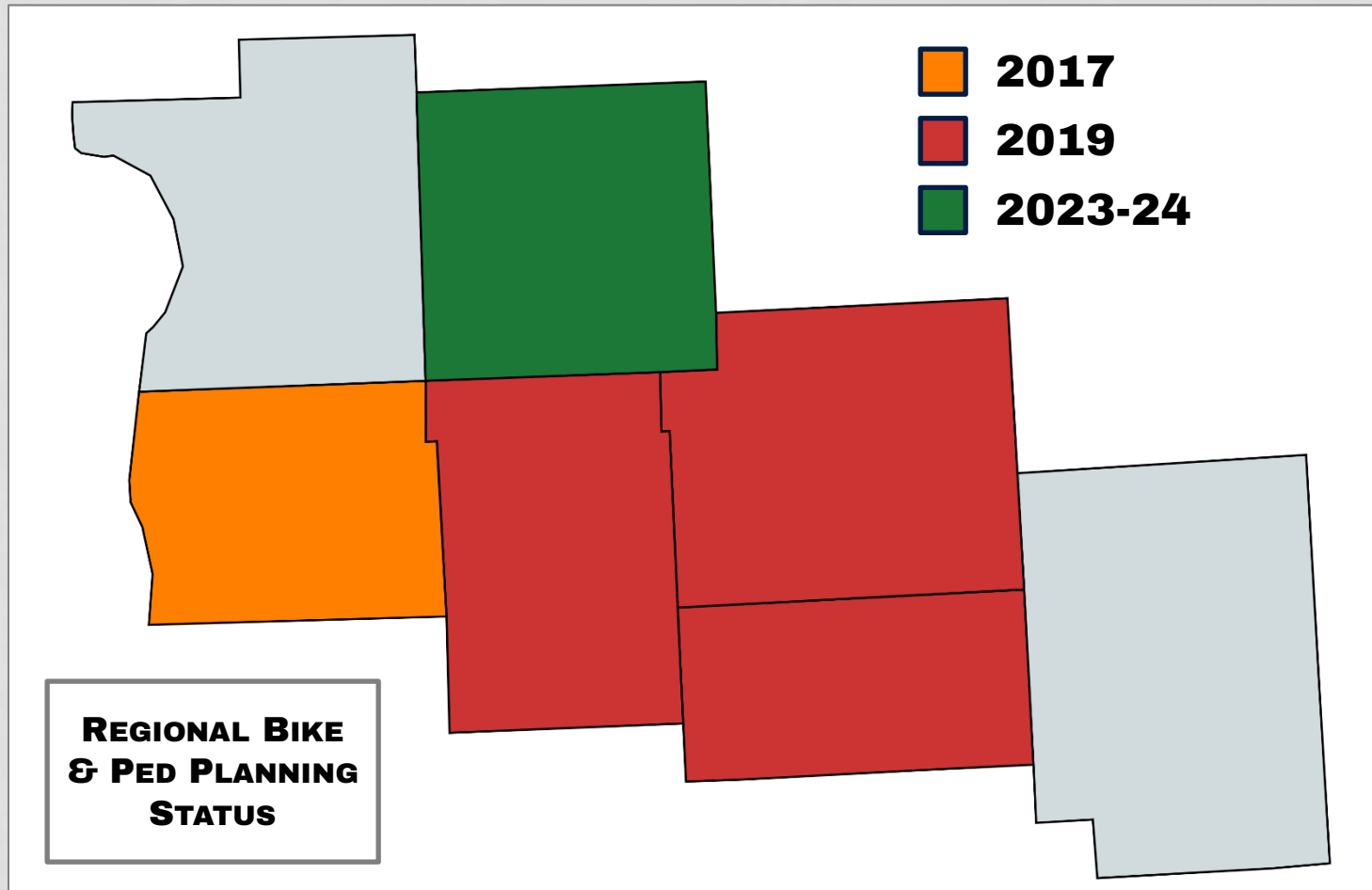
INTRODUCTION – COMMITTEE

- Name
- Title / Affiliation (community or interest group)
- Walker or Bicyclist
 - Comfort level on a bicycle:
 - **Experienced:** Confident and comfortable riding with traffic in most situations.
 - **Casual:** Prefer separated paths but will ride on roads where space is available, and traffic is manageable.
 - **Novice:** Only feel safe on separated paths.
 - **I don't ride** and have no plans to start.
- Interest in the Bicycle & Pedestrian Plan
 - What you hope it will identify, what you hope to gain from it, etc.

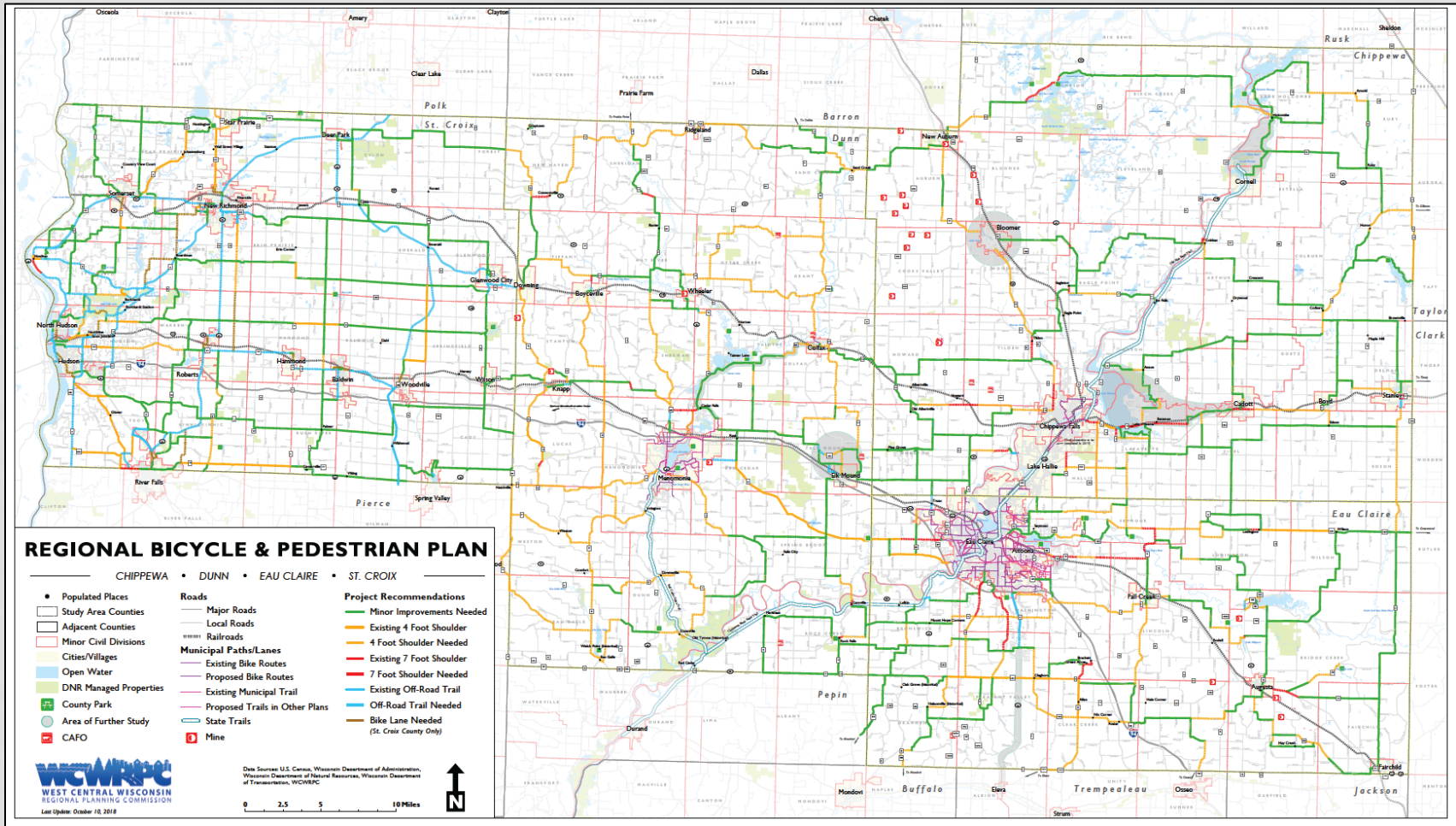
INTRODUCTION – PROJECT

- The goal of this committee is to create a plan that will:
 - Guide the development of a bicycle and pedestrian system for Barron County
 - Guide the development of a bicycle and pedestrian system for a multi-county region

INTRODUCTION – PROJECT



INTRODUCTION – PROJECT



INTRODUCTION – PROJECT

- The plan is intended to:
 - Be implementable
 - Create a coordinated and connected system
 - Help to garner grant funding for improvements
 - Help to make wise investments, no matter how they are funded

ROLES & RESPONSIBILITIES

COMMITTEE POSITIONS, EXPECTATIONS OF MEMBERS

ROLES

- Chair
- Vice-Chair
- Voting Member
- Non-Voting (Advisory) Member
- Secretary (Staff Member)

RESPONSIBILITIES

- To attend and actively participate in meetings;
- To provide input towards, and stay focused on, the topic being discussed;
- To review and give constructive comment on materials produced or distributed by the planning team, and;
- To provide constructive evaluation at the end of each meeting.

PLANNING PROCESS

SCOPE, SCHEDULE, WEBSITE

SCOPE – 2023

Work Scope	Completion Date	WCWRPC	Barron County
1.0 Background Research	August 2023	X	
1.01 Review Existing Plans & Summarize		X	
1.02 Inventory Existing Facilities		X	
1.03 Research Potential Issues & Opportunities		X	
1.04 County Demographic Profile		X	
1.05 Inventory Current Usage		X	
2.0 Form Study Advisory Committee	August 2023		X
2.01 Hold Advisory Committee Kick-off Meeting	August 10, 2023	X	X
2.02 Develop Website & Other Communications Material			
3.0 Draft Mission, Goals & Objectives	September 2023	X	X
3.01 Compose Draft Vision Statement & Goals		X	
4.0 Develop Public Input Instruments	September 2023	X	
4.01 Online Survey / Online Mapping Tool		X	
4.02 Materials for Open House #1		X	
4.03 Promotional Efforts		X	X
5.0 Public Open House #1	November 2023	X	X
5.01 Intro to Study & Process		X	
5.02 Public Input on Goals & Objectives		X	
5.03 Public Input on Rider Comfort Levels & Riding Habits		X	
5.04 Public Input on Route & Trail System Gaps & Desired Destinations		X	
6.0 Advisory Committee Meeting #1: Review public input, refine goals and objectives, presentation of background information	November 2023	X	X

SCOPE – 2024

Work Scope	Completion Date	WCWRPC	Barron County
7.0 Analysis	January 2024	X	
7.01 Rating County & Local Roads for Bicycling		X	
7.02 Refining WISLR Data with Visibility Data Gathered in the Field		X	
7.03 Bikeway Corridor Identification		X	
7.04 Mapping of Analysis Data		X	
7.05 Advisory Committee Meeting #2: Discussion of road analysis and trail corridor identification, route identification		X	X
8.0 Municipalities Workshop: Achieving Walkability in Rural Communities	March 2024	X	
8.01 Research and Development Rural Walkability Presentation		X	
8.02 Hold Municipalities Workshop		X	X
9.0 Develop network	April 2024	X	
9.01 Regional Network		X	
9.02 Local Connections to Regional Network		X	
9.03 Prioritize Improvements		X	
9.04 Advisory Committee Meeting #3: Prioritization of regional network improvements		X	X
10.0 Implementation	May 2024	X	
10.01 Cost Estimates (planning level)		X	
10.02 Funding Options		X	
10.03 Policy Recommendations		X	
10.04 Best Practices		X	
11.0 Plan Adoption	August 2024	X	X
11.01 Public Open House #2		X	X
11.02 Recommendation Adjustments Based on Public Input		X	
11.03 Plan Approval by County Board			X

PROJECT WEBSITE

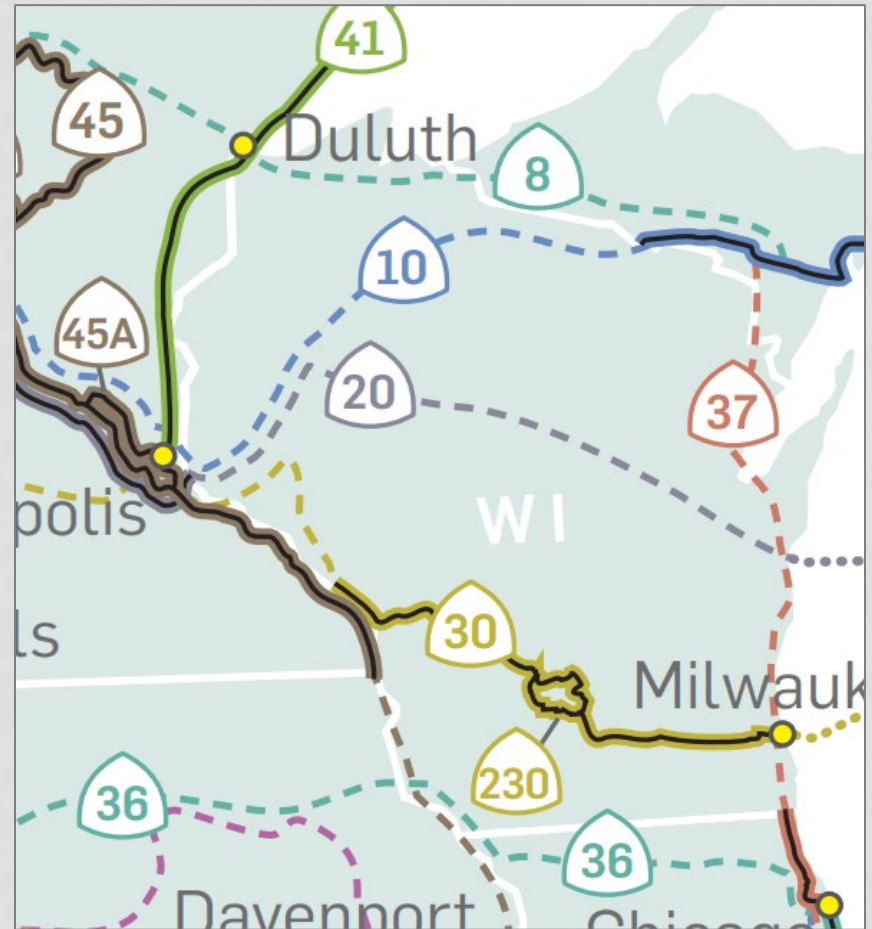
- ArcGIS Hub website
 - Mapping, survey, feedback, and document review components
- Created by WCWRPC
- Link on Barron County website

EXISTING PLANS

NATIONAL, STATE, LOCAL, AND EVERYTHING IN BETWEEN

EXISTING PLANS – NATIONAL LEVEL

- Adventure Cycling / American Association of State Highway and Transportation Officials (AASHTO)
 - US Bicycle Route System Network
 - National Corridor Plan*

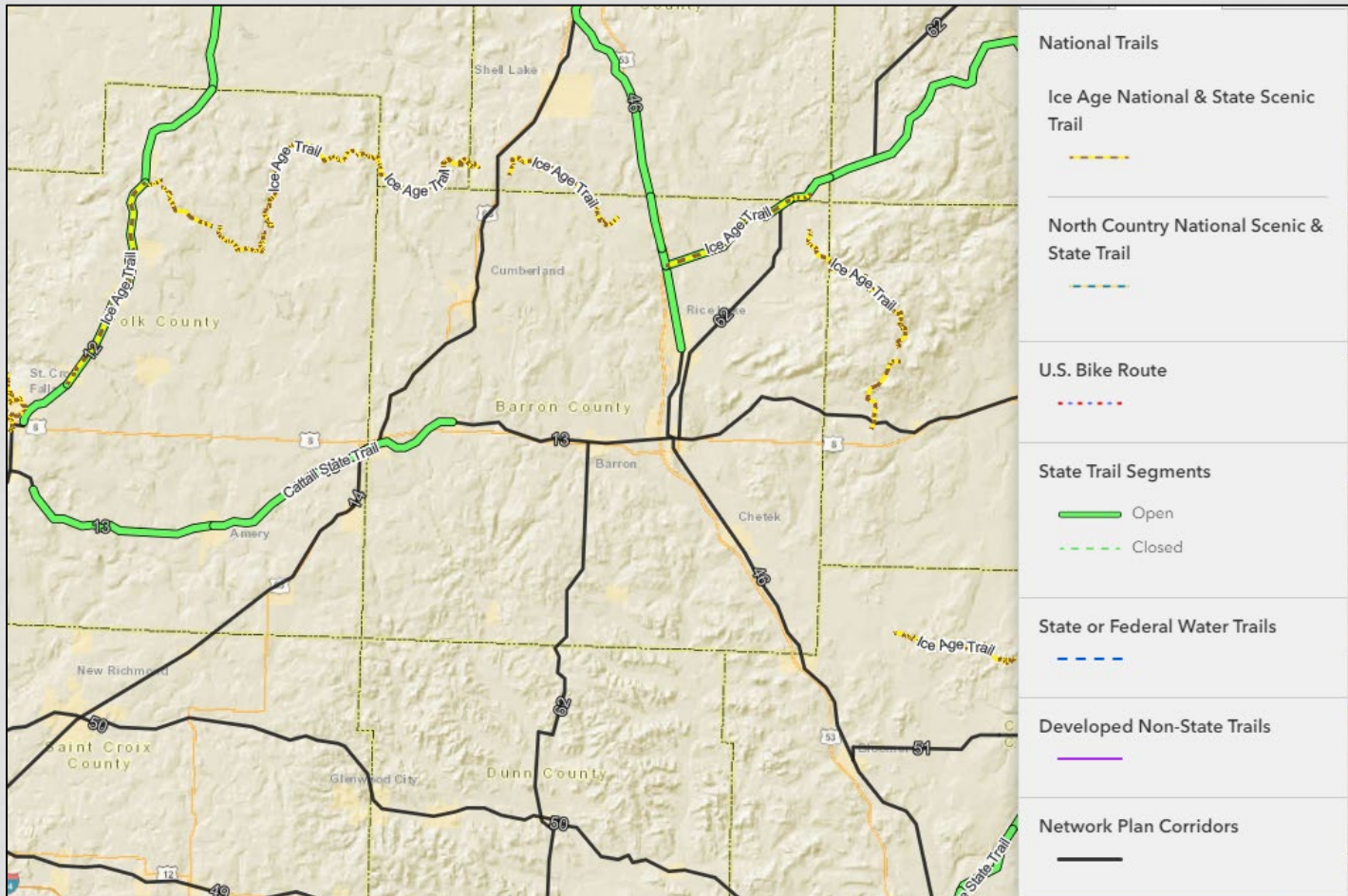


<https://www.adventurecycling.org/sites/default/assets/file/USBRS/USBRSCorridorMap.pdf?ts=20200814>

EXISTING PLANS – STATE LEVEL

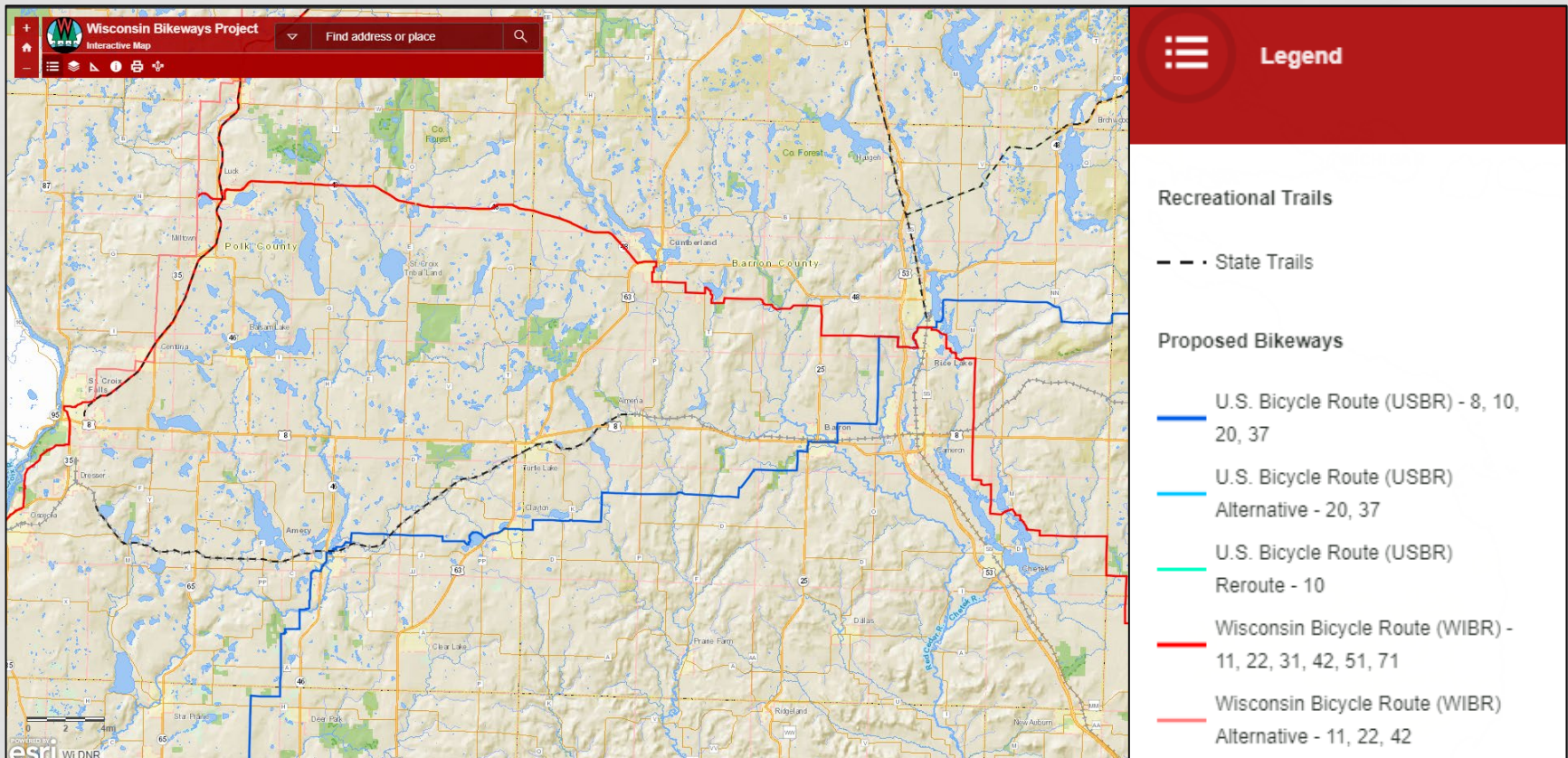
- Department of Natural Resources (DNR / WDNR)
 - Wisconsin State Trails Network Plan (2003) – updating*
 - Statewide Comprehensive Outdoor Recreation Plan (2019) – expiring
- Department of Transportation (DOT / WisDOT)
 - Wisconsin Active Transportation Plan 2050 – updating
 - Connect 2050 – updating
 - Wisconsin Bicycle Facility Design Handbook (2004)
 - Wisconsin Rural Bicycle Planning Guide (2006)
 - Wisconsin Guide to Pedestrian Best Practices (2010)
 - Wisconsin Facilities Development Manual (2017)
 - Wisconsin Bikeways Report (2020)*

EXISTING PLANS – WTNP



<https://experience.arcgis.com/experience/b288ad9756f2404db2e35f6e28763baf/page/Trails-Map/>

EXISTING PLANS – CORRIDORS



<https://wi-dnr.maps.arcgis.com/apps/View/index.html?appid=5816871723864e12ae6f687cb16ebade>

EXISTING PLANS – LOCAL LEVEL

- **Counties**
 - Barron County Comprehensive Plan (2010)
 - Barron County Outdoor Recreation Plan (2019)
 - Chippewa County Bicycle & Pedestrian Plan (2019)
 - Chippewa County Outdoor Recreation Plan – ongoing
 - Dunn County Bicycle & Pedestrian Plan (2019)
 - St. Croix County Bicycle & Pedestrian Plan (2017)
- **Safe Routes to Schools (School Districts)**
 - Barron (2014)
 - Chetek (2008)
 - Cumberland – ongoing
 - Rice Lake (2008)
 - Turtle Lake – ongoing

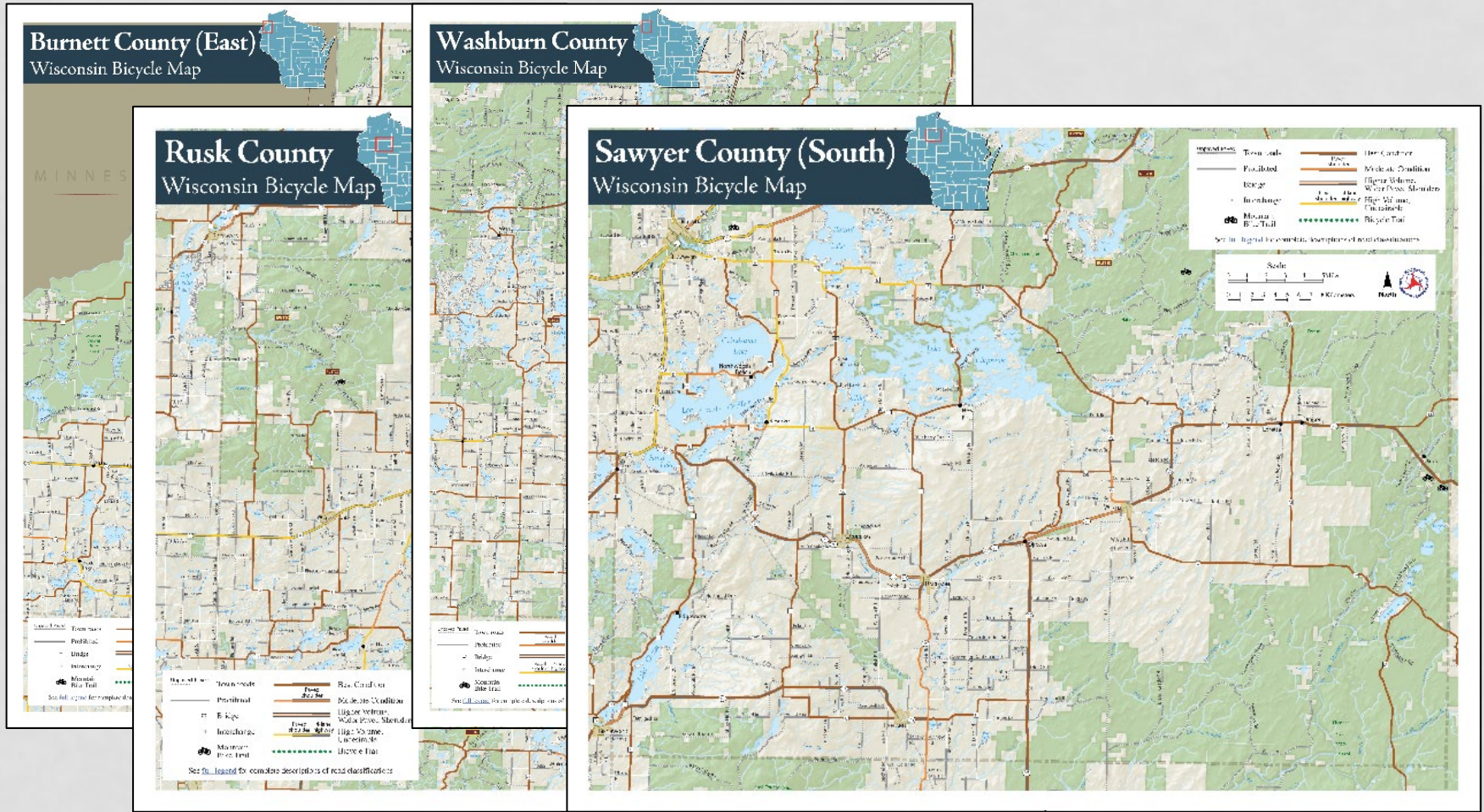
EXISTING PLANS – LOCAL LEVEL

- Other Relevant Local Plans
 - City of Barron Outdoor Recreation Plan (2023)
 - City of Rice Lake Bicycle & Pedestrian Plan (2011)
 - City / Village / Town Comprehensive Plans, where available, will be reviewed for information relevant to this project
 - WCWRPC Comprehensive Plan (2010)

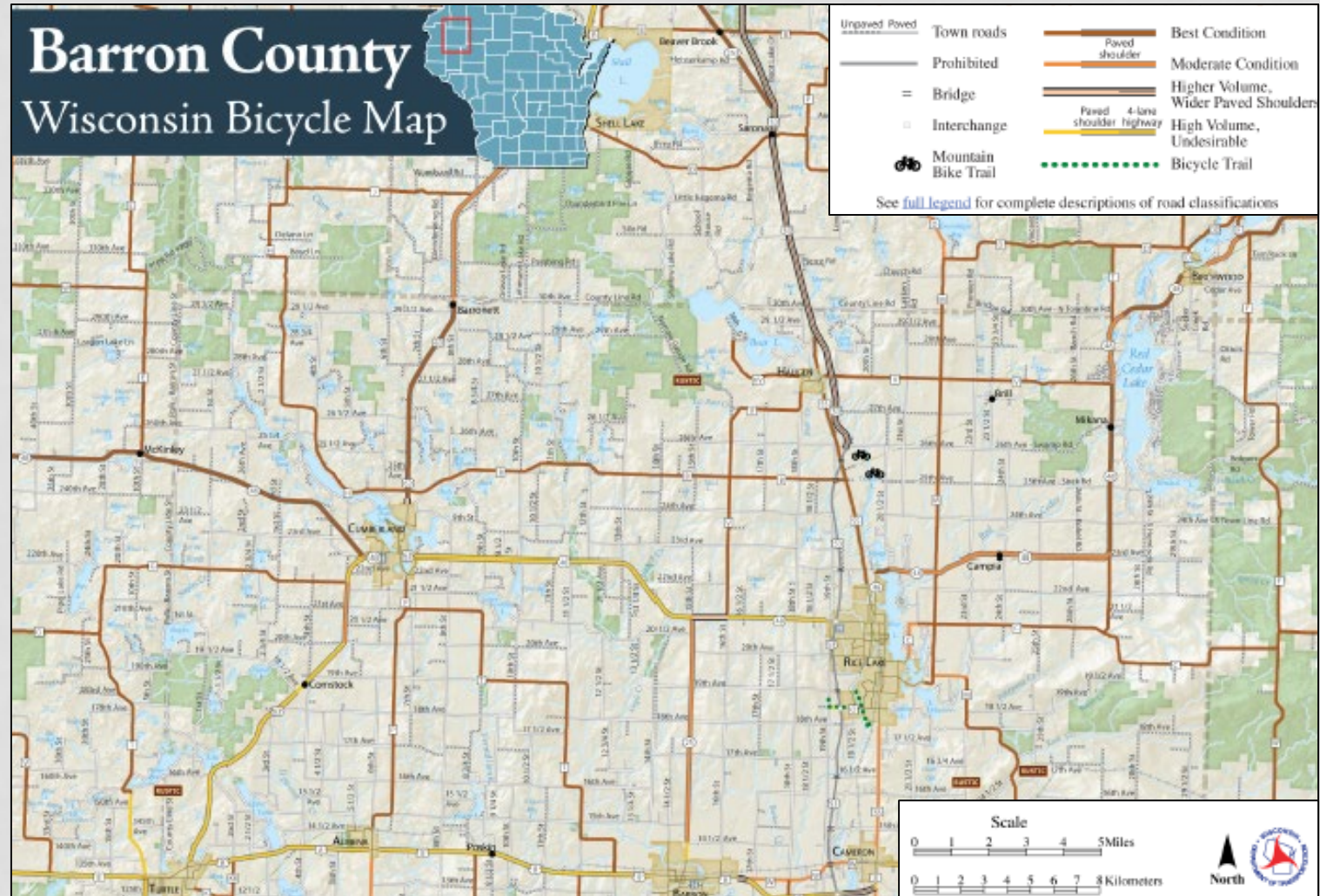
EXISTING FACILITIES

INVENTORY, DATA

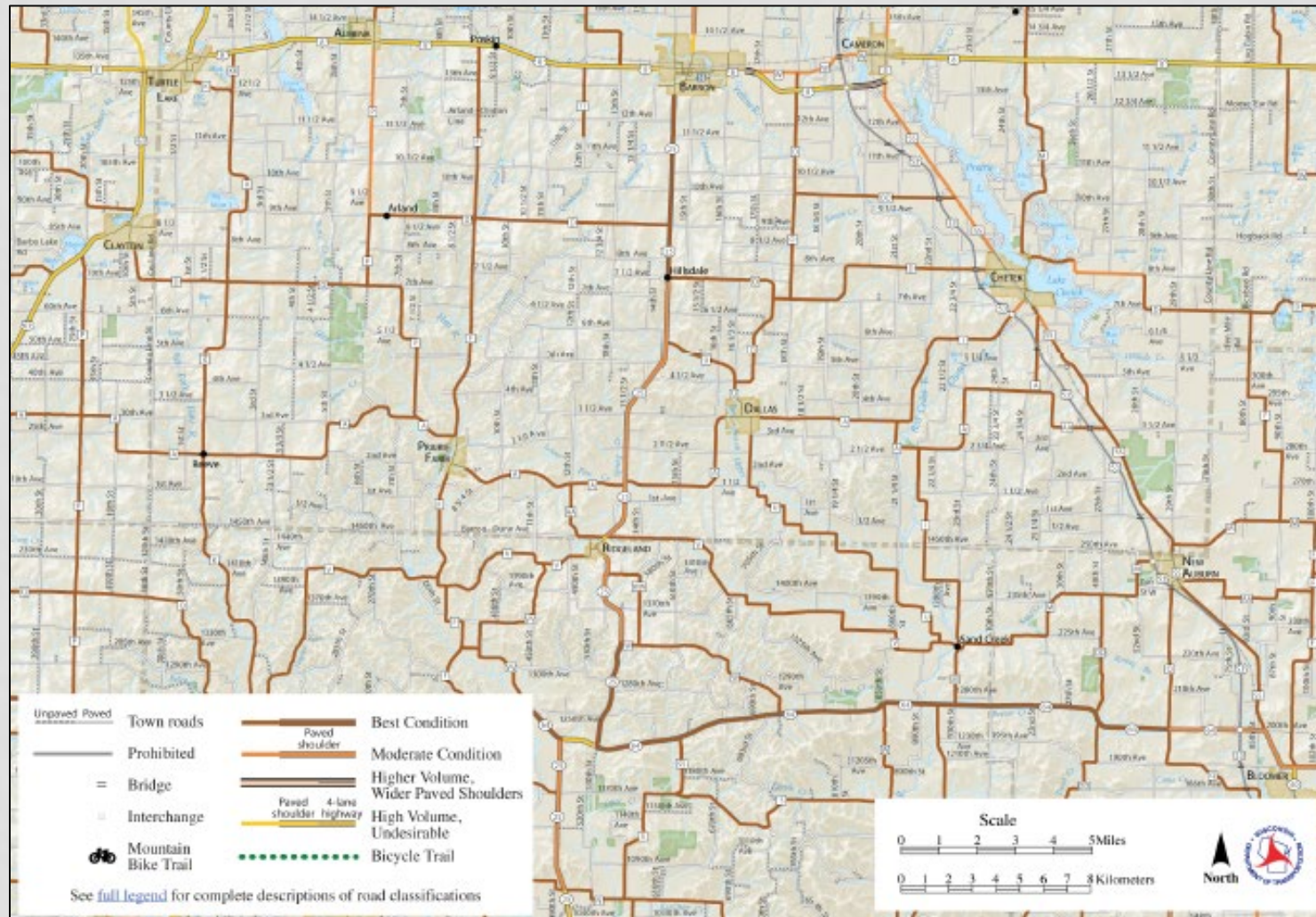
EXISTING FACILITIES – WDNR MAPS



EXISTING FACILITIES – WDNR MAPS



EXISTING FACILITIES – WDNR MAPS

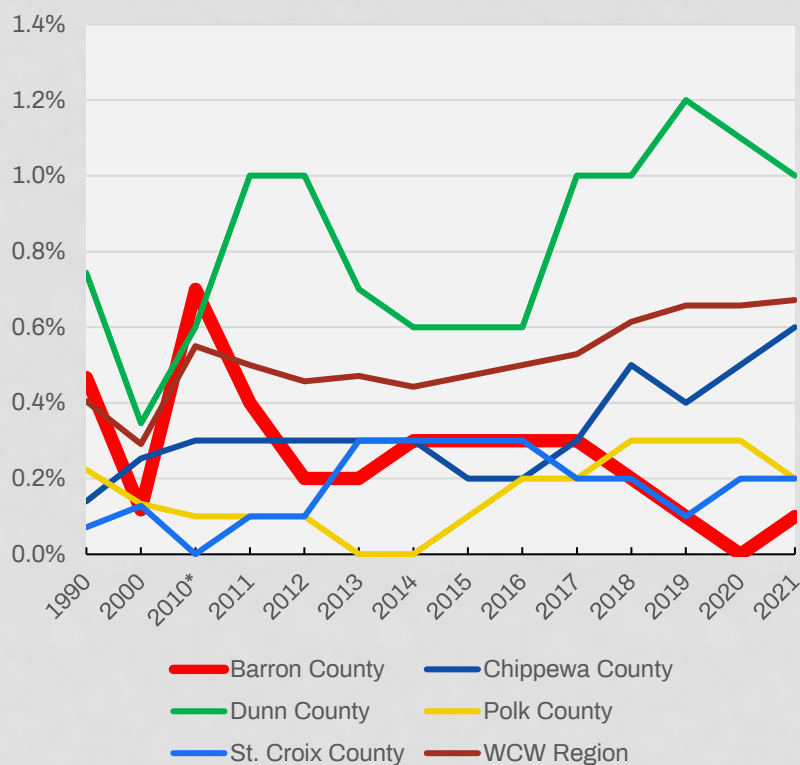


DATA

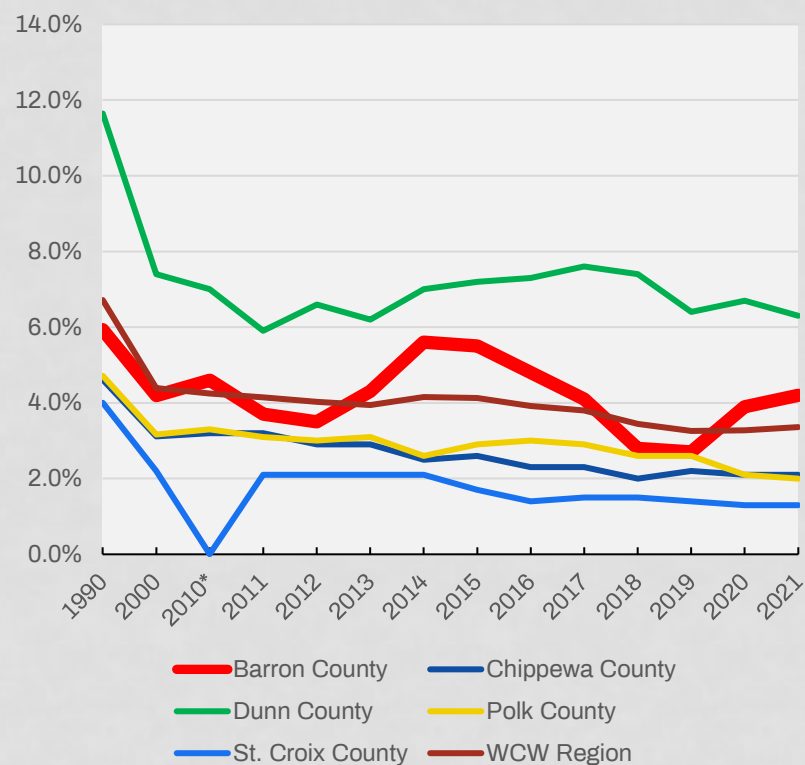
- Census Data
 - Commuter Trends
 - Demographics
- UW – TOPS Data
 - Crashes & Collisions
- WISLR Data
 - Road Conditions
- Strava Data
 - User-Driven Walking / Biking routes
- Public survey and feedback
- Other sources?

DATA – REGIONAL COMPARISON

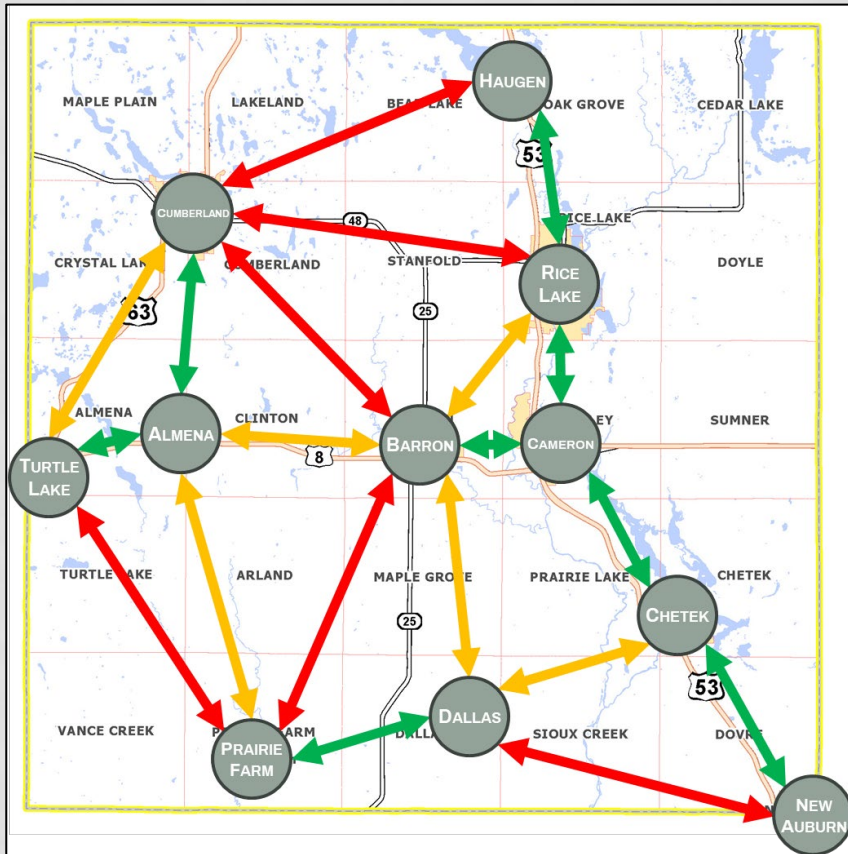
BIKE TO WORK



WALK TO WORK

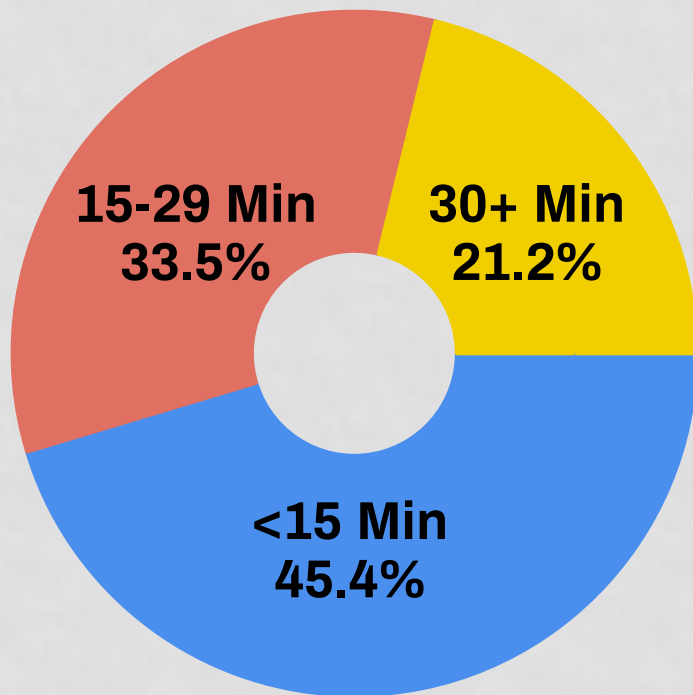


DATA – DISTANCE & TRAVEL TIME



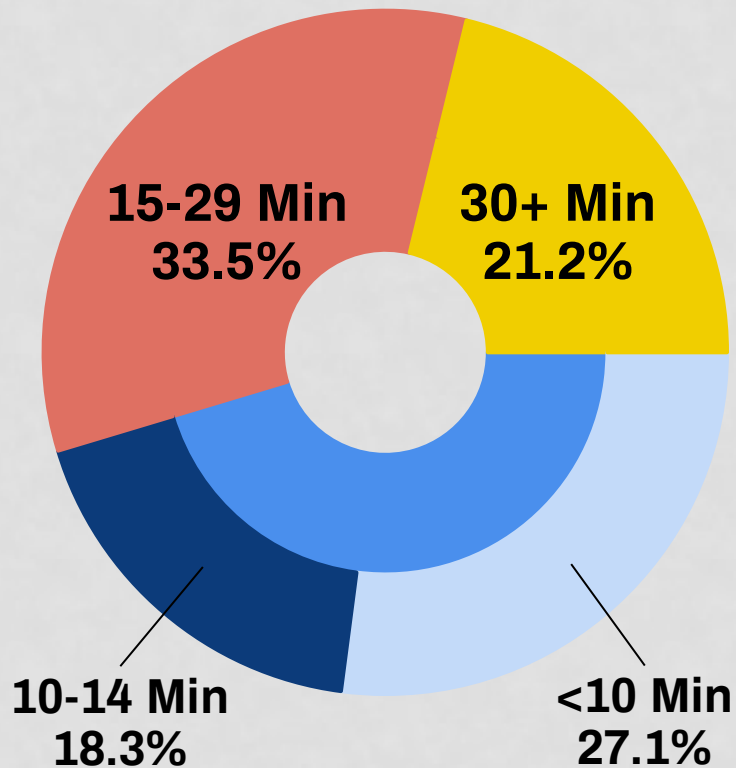
Route	Car (min)	Car (mile)	Bike (min)	Bike (mile)
Barron - Cameron	8	5.3	26	5.4
Almena - Turtle Lake	8	6.3	30	6.2
Cameron - Rice Lake	15	7.4	36	7.2
Haugen - Rice Lake	11	7.6	35	7.5
Almena - Cumberland	12	8.6	42	8.6
Cameron - Chetek	13	8.6	42	8.7
Chetek - New Auburn	14	9.4	46	9.4
Dallas - Prairie Farm	13	10.4	55	9.4
Dallas - Chetek	14	10.8	52	10.8
Barron - Dallas	15	11.6	56	11.3
Almena - Barron	12	9.5	59	11.3
Barron - Rice Lake	18	14	71	12.7
Cumberland - Turtle Lake	16	12.5	70	14.7
Almena - Prairie Farm	19	14.6	76	14.7
Dallas - New Auburn	20	18.7	83	15.9
Cumberland - Haugen	20	16.8	84	16.8
Barron - Prairie Farm	21	17.8	83	16.9
Barron - Cumberland	19	16.5	83	17.3
Cumberland - Rice Lake	19	14.7	85	17.3
Prairie Farm - Turtle Lake	23	18	92	19.6

DATA – COMMUTE TIMES (2021)

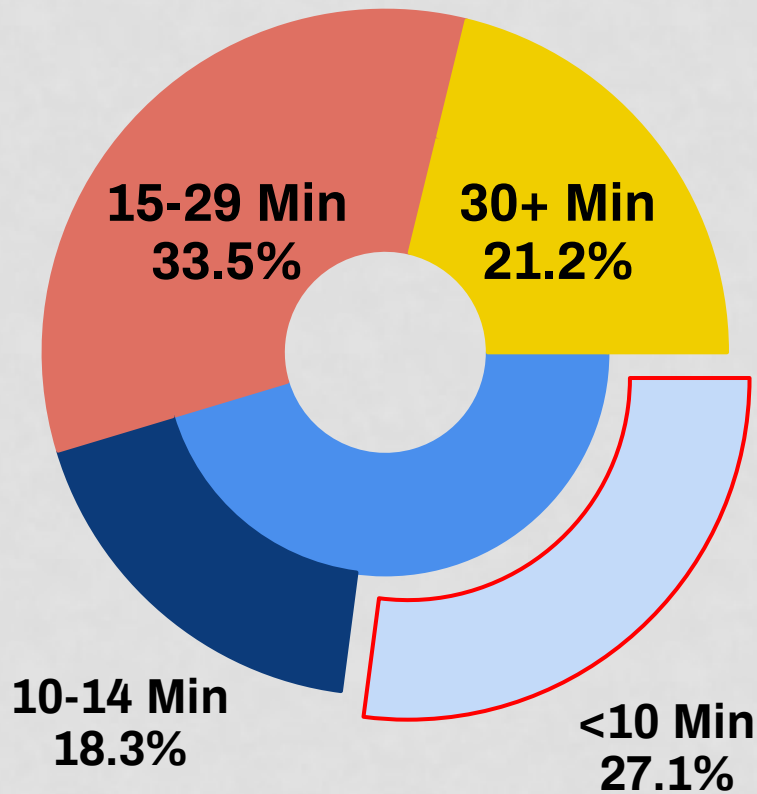


- Mean Travel Time: 20.5 minutes
- Largest group commute less than 15 minutes
- Note: 82% work in their county of residence (Barron County)

DATA – COMMUTE TIMES (2021)



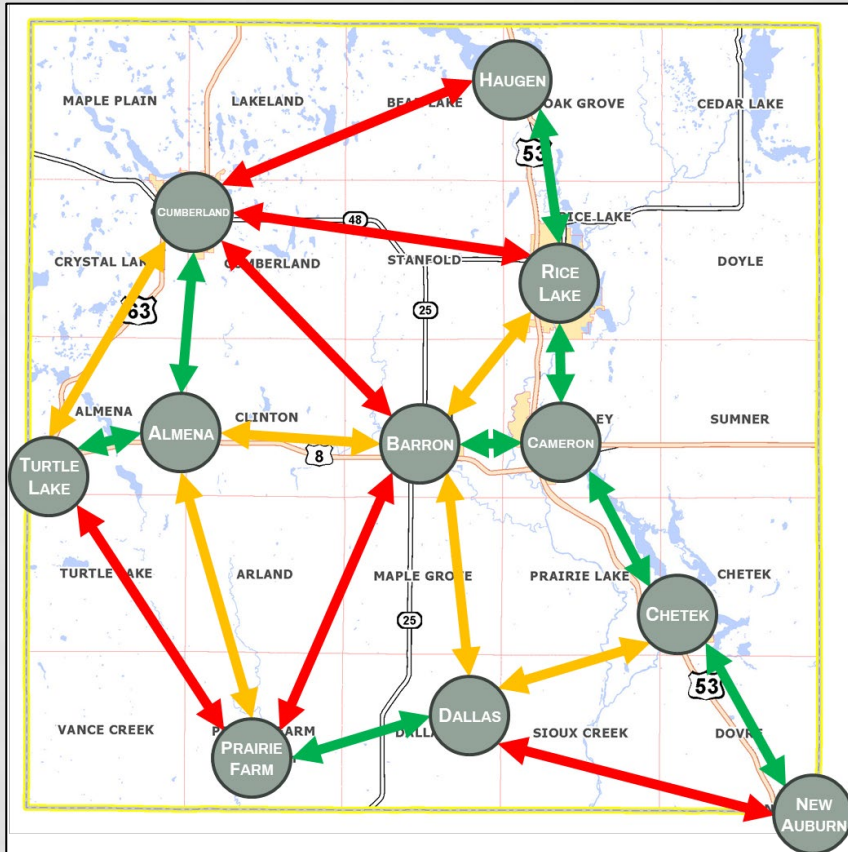
DATA – COMMUTE TIMES (2021)



- Almost one-third of commuters are within 10 minutes of their employment
- 27.1% = 5,979 commuters
- 22 bicyclists
- 926 walkers

Why aren't more people walking or biking?

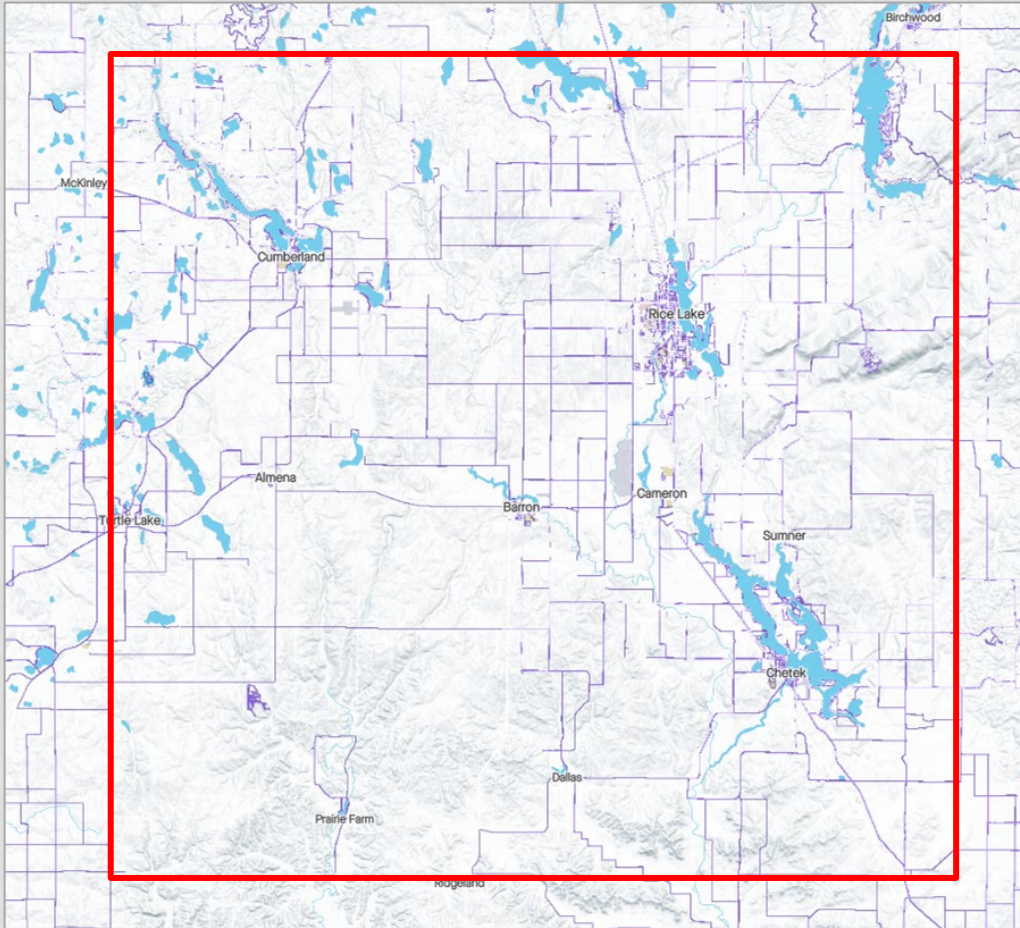
DATA – DISTANCE & TRAVEL TIME



Route	Car (min)	Car (mile)	Bike (min)	Bike (mile)
Barron - Cameron	8	5.3	26	5.4
Almena - Turtle Lake	8	6.3	30	6.2
Cameron - Rice Lake	15	7.4	36	7.2
Haugen - Rice Lake	11	7.6	35	7.5
Almena - Cumberland	12	8.6	42	8.6
Cameron - Chetek	13	8.6	42	8.7
Chetek - New Auburn	14	9.4	46	9.4
Dallas - Prairie Farm	13	10.4	55	9.4
Dallas - Chetek	14	10.8	52	10.8
Barron - Dallas	15	11.6	56	11.3
Almena - Barron	12	9.5	59	11.3
Barron - Rice Lake	18	14	71	12.7
Cumberland - Turtle Lake	16	12.5	70	14.7
Almena - Prairie Farm	19	14.6	76	14.7
Dallas - New Auburn	20	18.7	83	15.9
Cumberland - Haugen	20	16.8	84	16.8
Barron - Prairie Farm	21	17.8	83	16.9
Barron - Cumberland	19	16.5	83	17.3
Cumberland - Rice Lake	19	14.7	85	17.3
Prairie Farm - Turtle Lake	23	18	92	19.6

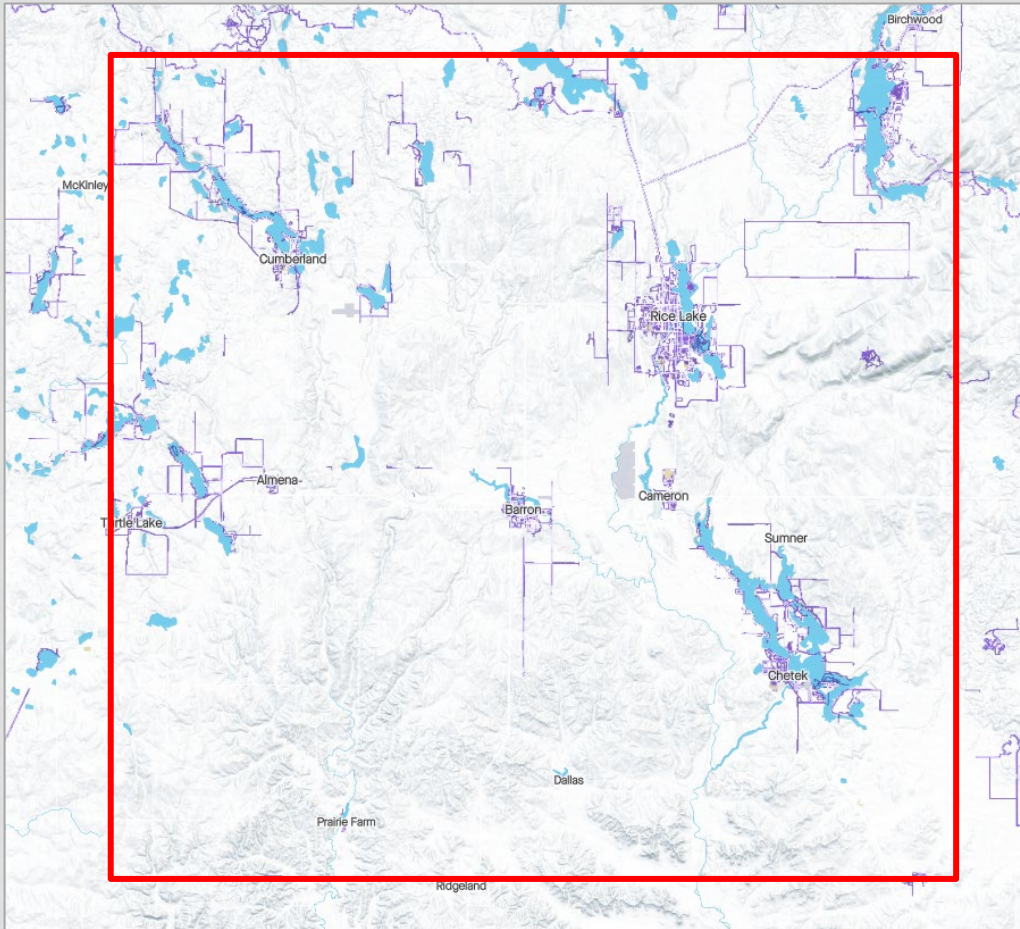
..... 10-Min Commute - - - 15-Min Commute

DATA – STRAVA (BIKING)



- Trips are well distributed, except around Prairie Farm
- Thoughts?
- Strava Site

DATA – STRAVA (WALKING)



- Trips are mostly within communities or near water
- Thoughts?
- [Strava Site](#)

VISION, GOALS & OBJECTIVES

DRAFT VISION STATEMENT

- Barron County will work in collaborative partnership with towns, villages, and cities to implement safe, convenient, and enjoyable walking and biking opportunities that serve a broad range of people with different ages, abilities, and interests; support tourism and enhanced quality of life; and link communities to each other, to key destinations, and to surrounding counties.

DRAFT VISION STATEMENT

- Barron County will work in collaborative partnership with towns, villages, and cities to implement safe, convenient, and enjoyable walking and biking opportunities that serve a broad range of people with different ages, abilities, and interests; support tourism and enhanced quality of life; and link communities to each other, to key destinations, and to surrounding counties.
- Thoughts or suggestions?

GOALS & OBJECTIVES

On the sheet provided, write 2 goals and 2-3 supporting objectives for each of those goals.

Goals: Generalized, broad, long-range aims.

Objectives: Actionable items. Should be measurable and specific.

COMMITTEE EXERCISE

Consider the following when you are creating your goals and objectives:

- Collaboration – partners, roles, building support
- Implementable – realistic, attainable, project-oriented
- Safety
- Inclusivity – accessible, range of biking and walking abilities and comfort levels
- Connectivity – internally and externally

Vision → Goals → Objectives → Projects → Results!

Examples:

- **Goal:** Increase safety and comfort for all road users.
 - **Objective:** Work with local governments, schools, advocacy and enthusiast groups to create an educational campaign for school children and adults to increase awareness and understanding of traffic laws regarding pedestrians and bicyclists.
- **Goal:** Increase connectivity for bicycling and pedestrians.
 - **Objective:** Increase the length and number of trails in the county.
 - **Objective:** Work to close gaps as identified by the county bicycle and pedestrian plan's gap analysis.

Goal / Objective

NEXT STEPS & QUESTIONS

OPEN HOUSE #1, MEETING #2, ANYTHING ELSE?

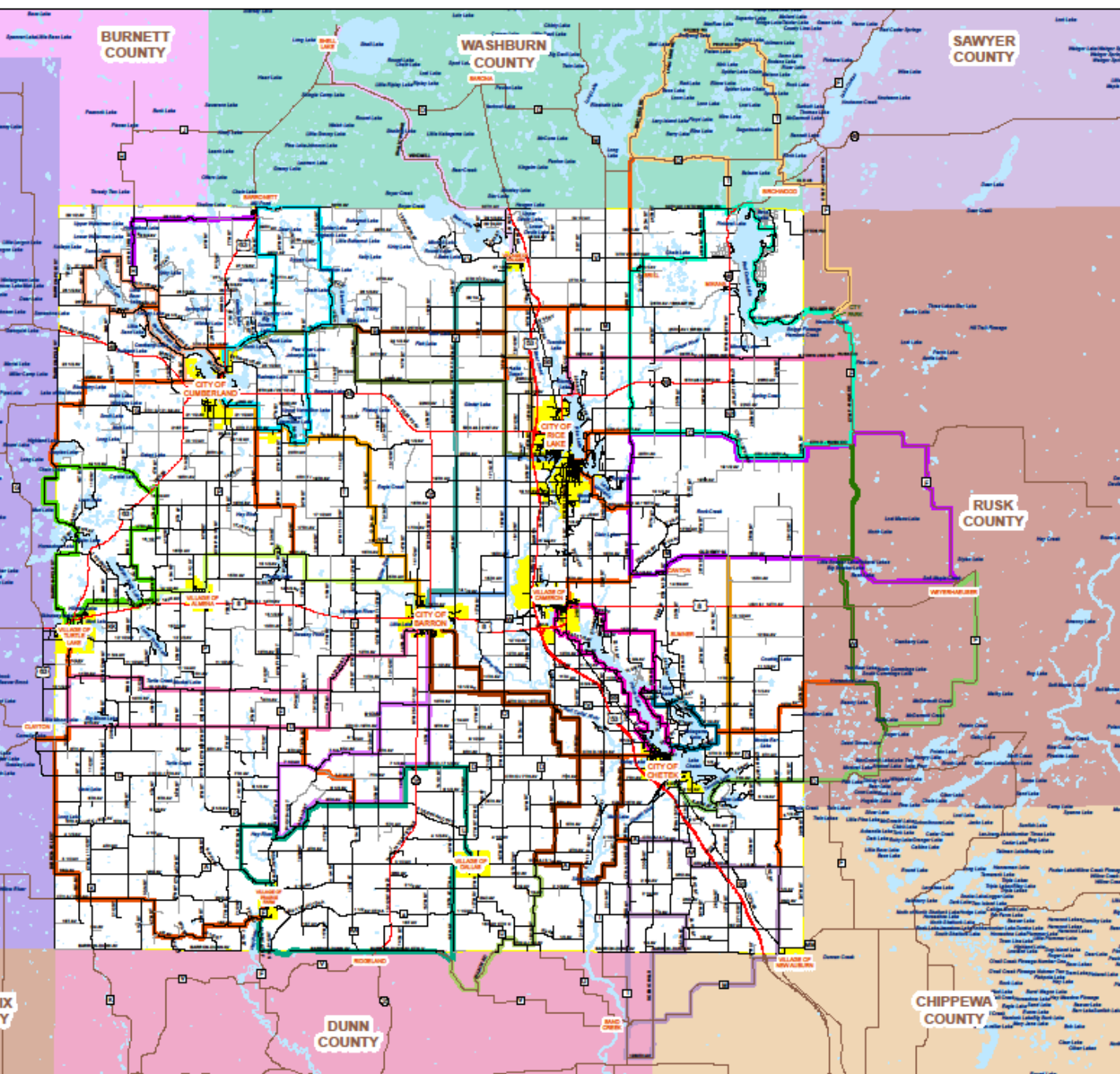
PUBLIC OPEN HOUSE #1

- Week of October 23-27
- 5 PM
- Highway Department Crew Room
- Purpose:
 - Increase awareness of the plan and the public survey
 - Mapping exercises (evaluate Stress Test Map and identify preferred routes)
 - Collect public input on findings to date
- Promotion
 - County Administrator Report
 - Word of mouth
 - Website
 - What else?

ADVISORY COMMITTEE MEETING #1

- Thursday, November 9 or 16 at 8AM
- Highway Facilities Meeting Room
- Purpose
 - Review Census data
 - Review Road Stress Test
 - Review Open House feedback
- What you need to do:
 - Take the survey (once available)
 - Packets for the meeting will be provided a week in advance. Read them.
 - Prepare comments on the public input results.
 - Think about potential routes or areas for improvement – we will be mapping them.

BARRON COUNTY BIKE ROUTES



- 27th Street 7.5 mi
- Barron - Cumberland 17.5 mi
- Barron - Haugen 18 mi
- Barron - Moon Lake loop 30.3 mi
- Barron - Turtle Lake 20 mi
- Barronett - Sand Lake 8 mi
- Beaver Dam - Sand Lake 20 mi
- Birchwood Lakes 30.4 mi
- Chetek - Weyerhaeuser 21 mi
- City Hwy B 6 mi
- Cumberland - Staples Lake 8.8 mi
- Dorly Creek 27.5 mi
- Haugen - Shell Lake 16 mi
- Lakeland 28 mi
- Old 14 Blue Hills 40 mi
- Pine Creek Valley 9.6 mi
- Pokegama Lake 6.5 mi
- Prairie Farm - Clayton 18.5 mi
- Prairie Lake 20 mi
- Red Cedar Lake 40 mi
- Rice Lake - Barron 11.5 mi
- Rice Lake - Cumberland 18.6 mi
- Rice Lake - Haugen 9 mi
- Rusk City W 13.5 mi
- Sand Creek - New Auburn 39.4 mi
- Southern Hills 34 mi
- Tour de Color 38 mi
- Town Line Road 9 mi
- Turtle Lake 25 mi
- Connecting route
- US / State Hwy
- County Hwy
- Municipal Road Paved
- Municipal Road Unpaved
- Roads in Adjoining Counties
- County Boundary
- City or Village

TOTAL MILES: 643



Prepared by: Tyler Gruetzmacher
Barron Co SWCD
(715) 537-6246
Please read Barron cycling notes
www.barroncountyiwi.gov



May 2011

THAT IS ALL FOR TODAY! THANK YOU!

- Ross Pietrzak, Senior Planner
- West Central Wisconsin Regional Planning Commission
- 715-836-2918, Ext. 24
- rpietrzak@wcwrpc.org

