

# HEALTH AND HUMAN SERVICES BOARD

**Monday, June 26, 2023 – 9:30 a.m.**

**Barron County Government Center – Veterans Memorial Auditorium  
335 East Monroe Avenue – Barron, Wisconsin 54812**

## AGENDA

1. Call to Order
2. Public Meeting Notification
3. Approve Agenda\*
4. Approve Minutes (4-24-23)\*
5. Comments from the Public
6. 2023 Financials
  - a. Health & Human Services
  - b. Child Support
7. 2022 DHHS Annual Report Overview / Discussion
8. Opioid Settlement Disbursement Update
9. Department Updates
  - a. Child Support
  - b. Health & Human Services
10. Set Next Meeting Date – July 24, 2023
11. Future Agenda Items
12. Adjourn

*\* Board Action Requested*

### ***Mission Statement***

*To meet essential health and safety needs and to promote an independent and enhanced quality of life for the people of Barron County.*

### ***Vision Statement***

*To provide high quality, effective and responsive programs through coordinated efforts of the Department and its community partners.*

**Please call 537-6841 if you are unable to attend this meeting.**

cc: Bartlett, Vaughn, Banks, Moen, P. Anderson, Wenzel, Kolpeck, Heil, Reisner, Knutson, Sampson, Apfel, Frolik, Muench, French, Syvinski, Busch, Sauve, Roemhild, Olsen, Broten, Hay, Co. Clerk, Webmaster & 3 Public Postings

*Any person who has a qualifying disability under the Americans with Disabilities Act and requires the meeting or materials at the meeting to be in an accessible format must contact the County Clerk's office at 715/537-6200 at least 24 hours prior to the meeting so that arrangements may be made to accommodate your request.*

## **Barron County Health & Human Services Board Meeting**

Government Center Auditorium

Monday, April 24, 2023 9:30AM

**PRESENT:** Karolyn Bartlett – Chair, Barb Reisner, John Banks, Bob Heil, Toniann Knutson, Carol Moen, Dr. Richard Sampson, Patti Anderson, Diane Vaughn, Louie Okey.

### **APPEARING VIRTUALLY:**

**ABSENT:** Stacey Wenzel, Jerry Apfel, Lynn Kolpack.

### **OTHERS ATTENDING:**

**STAFF PRESENT:** Jeff French, County Administrator; Stacey Frolik, DHHS Director, John Muench, Director, Child Support; Child Support Program Manager, Lynette Metcalf, DHHS Program Managers; Karla Broten, Laura Sauve, Ann Hay, Mary Olsen, Bonnie Roemhild; Pam Gannon, DHHS Administrative Assistant.

### **STAFF APPEARING VIRTUALLY:**

**OTHERS ATTENDING:** Nicole Nelson, Public Health Nurse.

**STAFF ABSENT:** Jodi Busch, Heidi Syvinski.

Call to order by Chair Karolyn Bartlett at 9:30 a.m.

Public Meeting Notification read by Bartlett.

**Motion:** (Banks/Anderson) to approve agenda for April 24, 2023 DHHS Board meeting. Carried.

**Motion:** (Knutson/ Moen) to approve minutes from the March 31, 2023 Health and Human Services Board meeting. Carried.

**Comments from the Public:** Heidi Wise, 746-21st. St. Chetek, David Fruit, 1315 Babcock Ave. Cumberland, Amanda Kohnen, 2038 6<sup>th</sup> Ave. Chetek, Mike Prusinski, 2701 16<sup>th</sup> Ave. Rice Lake, Pattie Greene 1229 21<sup>st</sup> St. Cameron.

**Public Health Updated Fees:** (Anderson/Moen) to approve updated fees for Public Health. Carried

**Introduction of new Board Member:** Introduction of Barb Reisner.

### **Resolution – Supporting Barron County Policy on Taxpayer Funded Incentives for**

**Vaccinations:** **Motion:** To Not Approve Resolution Supporting Barron County Policy on Taxpayer Funded Incentives for Vaccination: (Okey/Anderson). **Roll call vote Approve;** Anderson, Banks, Sampson, Moen, Reisner, Okey and Bartlett. **Deny;** Knutson, Vaughn, Heil.

**Child Support Presentation:** Metcalf gave presentation on Child Support and answered questions.

**Case Process for Reproductive Health Services for a Minor:** Nicole Nelson, RN and Sauve presented on Case Process for Reproductive Health Services for a Minor and question answered.



**Department Updates:**

**DHHS:** No additional updates.

**Child Support:** No additional updates.

**Set next meeting date:** May 22, 2023, at 9:30 am

**Future Agenda Items:**

**Adjourn** – (By unanimous consent) adjourned the meeting at 10:50 a.m.

Respectfully submitted by Pam Gannon, Administrative Assistant  
(*Minutes are not official until approved by the DHHS Board.*)



# BARRON COUNTY DHHS

## **2022 Annual Report**



## BARRON COUNTY DEPARTMENT OF HEALTH & HUMAN SERVICES

# Annual Report

# 2022



*COVID-19 volunteer recognition banquet August 2022*



**BARRON COUNTY DEPARTMENT OF  
HEALTH & HUMAN SERVICES**

335 East Monroe Avenue, Room 338  
Barron, WI 54812  
715-537-5691







## BARRON COUNTY PUBLIC HEALTH

### Mission

*Promoting, protecting, and preserving health  
through partnerships with people and communities*

### Vision

*Everyone living better, longer*

### Guiding Values

- *We work to ensure health equity*
- *We promote trauma informed practices internally and externally*
- *We use collaborative processes to achieve our vision and mission*
- *We lead the community in the use of evidence based public health practices*
  - *We improve programming through quality improvement*
- *We provide an environment of professional growth and satisfaction*

### Programs

- Communicable Disease Prevention and Control
- Rabies Prevention
- Immunizations
- Birth to Three Program
- Maternal Child Health
- Women, Infants and Children (WIC)
- Reproductive Health Services
- Environmental Health Services
- Community Health Promotion
- Refugee Health Services
- Emergency Preparedness
- Car Seat Program
- Community Sharps Disposal



# 2022 Public Health Staff

## DHHS Director

*Stacey Frolik*

## Public Health Program Manager

*Laura Sauve*

## Nursing Staff

*Becky Rundhaug*

*Beth Wood (Resigned February 2022)*

*Nicole Nelson*

*Patricia Wickman (January 2022)*

*Karla Potts-Shufelt (February 2022)*

## Environmental Health

*Mackenzie Benda*

*Rachel Henke*

*Pam Gannon (December 2022)*

*Taylor Myers (transferred out December 2022)*

## Administrative Staff

*Sue Pruzek*

*Brownie Nelson*

## Women Infants & Children (WIC)

*Nichole Thompson, Director*

*Rhonda Siefert*

*Savannah Wright - Lactation Peer Educator*

*Mariah Munger - Lactation Peer Educator*

## Birth to Three

*Joyce Pond*

*Stephanie Hinrichs*

## Public Health Specialist

*Sarah Turner*

## Community Health Workers

*Maria Frisinger*

*Isaak Mohammed*

*Rosa Rodriguez*



### *In Memory of Rod Olson*

*June 2, 1947-November 4, 2022*

Dr. Rod Olson served our community for more than 40 years. He selflessly continued to help his community and public health during the COVID-19 pandemic despite his own health concerns. Thank you Dr. Olson, you are missed by your community.

## *Medical Advisor*

Dr. Richard Sampson,  
Mayo Clinic Health  
System-Northland,  
became public  
health's volunteer  
medical advisor in  
June 2020



## *Staff*

Public Health  
Staff Celebrate  
National  
Influenza  
Vaccination  
Week



The 2022 Public Health Annual report is organized using the 10 essential public health services plus management and governance. These areas align with the 12 domains the Public Health Accreditation Board endorses. The essential public health services are recognized as public health services that all communities should provide.

## Essential Service #1: Monitor Health

*Monitor health status to identify and solve community health problems*

**Community Health Assessment:** Public Health, along with community partners and residents reassessed our 2018 Community Health Assessment in 2021 through an affirmation survey. The survey showed the community still felt the top three health priorities are Substance Use, Mental Health & Chronic Disease. Public Health continues to collaborate with our health care providers, community organizations, and individuals to improve conditions surrounding these issues. Community health improvement planning meetings were held with partners in 2022 to come to consensus on how to respond to these health needs. *Thrive Barron County: Growing Together in Health* is the name of this collaborative process.



### Barron County's Top 3 Health Priorities



**Substance Use**



**Mental Health**



**Chronic Disease Prevention  
and Management**

Quantitative and qualitative data identified the health priorities. This included comprehensive secondary data collection and a community affirmation survey.



## Essential Service #2: INVESTIGATE

*Diagnose and investigate health problems and health hazards in the community*

Barron County Public Health investigates health and environmental hazards every day. Public health uses the Wisconsin Electronic Disease Surveillance System (WEDSS). This system allows public health to obtain suspect and confirmed diseases via an electronic database. We also partner with community members, schools, and long-term care facilities to share concerns about suspect and known communicable disease cases and outbreaks.

### Confirmed and Probable Communicable Diseases

DISEASE	2018 Data	2019 Data	2020 Data	2021 Data	2022 Data
Lyme Disease	10	20	26	0	6
Ehrlichiosis/Anaplasmosis	10	10	7	9	8
Babesiosis	3	0	2	1	1
DISEASE	2018 Data	2019 Data	2020 Data	2021 Data	2022 Data
Blastomycosis	1	1	-	1	2
Campylobacter	23	29	17	23	29
Carbapenemase- producing carbapenem-resistant Enterobacteriaceae (CP-CRE)	1	0	0	0	0
Carbon Monoxide Poisoning	1	5	5	11	4
Cryptosporidiosis	17	8	7	8	9
Cyclosporiasis	2	3	2	2	1
E-Coli Shiga Toxin Producing (STEC)	10	8	5	5	6
E-Coli Enteropathogenic (EPEC)	12	4	11	28	28



DISEASE	2018 Data	2019 Data	2020 Data	2021 Data	2022 Data
E-Coli Enterotoxigenic (ETEC)	3	1	1	6	7
Giardiasis	5	9	11	9	7
Hepatitis C	1-acute 16- chronic	0-acute 14-chronic	1-acute 12-chronic	0-acute 9-chronic	1-acute 5-chronic
Hepatitis E	1	0	0	0	0
Histoplasmosis	-	-	-	-	1
Legionellosis	1	3	1	2	2
Malaria	1	0	0	0	0
Methemoglobinemia	1	0	0	0	0
Methicillin-or Oxicillin Resistant S. Aureus (MRSA/ORSA)	1	1	0	0	0
Mycobacterial Disease (Non- Tuberculosis)	6	1	5	7	9
Parapertusis	1	0	0	0	0
Salmonella	8	13	4	8	17
Shigellosis	1	0	0	1	1
Streptococcal Disease, Invasive Group A and Group B	8	8	1	7	5
Latent Tuberculosis Infections	31	18	8	16	6
Toxoplasmosis	0	0	4	3	3
Tuberculosis	2	1	2	2	0
Vibrosis, Non-Cholera	-	-	-	-	1
West Nile Virus	0	0	0	0	0
Yersiniosis	-	-	-	-	3



<b>Sexually Transmitted Infections</b>	<b>2018 Data</b>	<b>2019 Data</b>	<b>2020 Data</b>	<b>2021 Data</b>	<b>2022 Data</b>
Chlamydia Trachomatis	126	107	99	121	89
Syphilis	1-primary 1-latent 1-early non primary/non secondary	2-late 3-early non primary/non secondary	3-unknown duration or late	1-secondary 1-unknown duration or late	2-early non primary/non secondary 1-unknown duration or late 4-secondary
Gonorrhea	25	22	19	28	19
<b>Vaccine Preventable Disease</b>	<b>2018 Data</b>	<b>2019 Data</b>	<b>2020 Data</b>	<b>2021 Data</b>	<b>2022 Data</b>
Pertussis	10	0	2	0	0
Varicella	2	3	2	0	2
Streptococcus Pneumoniae	5	4	2	2	4
Haemophilus Influenzae	2	2	1	1	0
Hepatitis B	5-chronic	3-chronic	1-chronic	0	2-chronic
Influenza Associated Hospitalizations	77	26	48	8	25
Coronavirus (COVID-19) Vaccines became available starting in December 2020	-	-	4,759	6,002	5,218

## 2022 Highly Pathogenic Avian Influenza Outbreak

In April and May 2022, seven farms were infected with highly pathogenic avian influenza (HPAI). Six farms raised turkeys for commercial purposes. One farm was a backyard flock of mixed bird types. In total 254,397 birds were depopulated. Public health monitored the health of 126 people who had contact with the infected farms for signs and symptom of illness for 10 days after their last exposure to the infected birds.

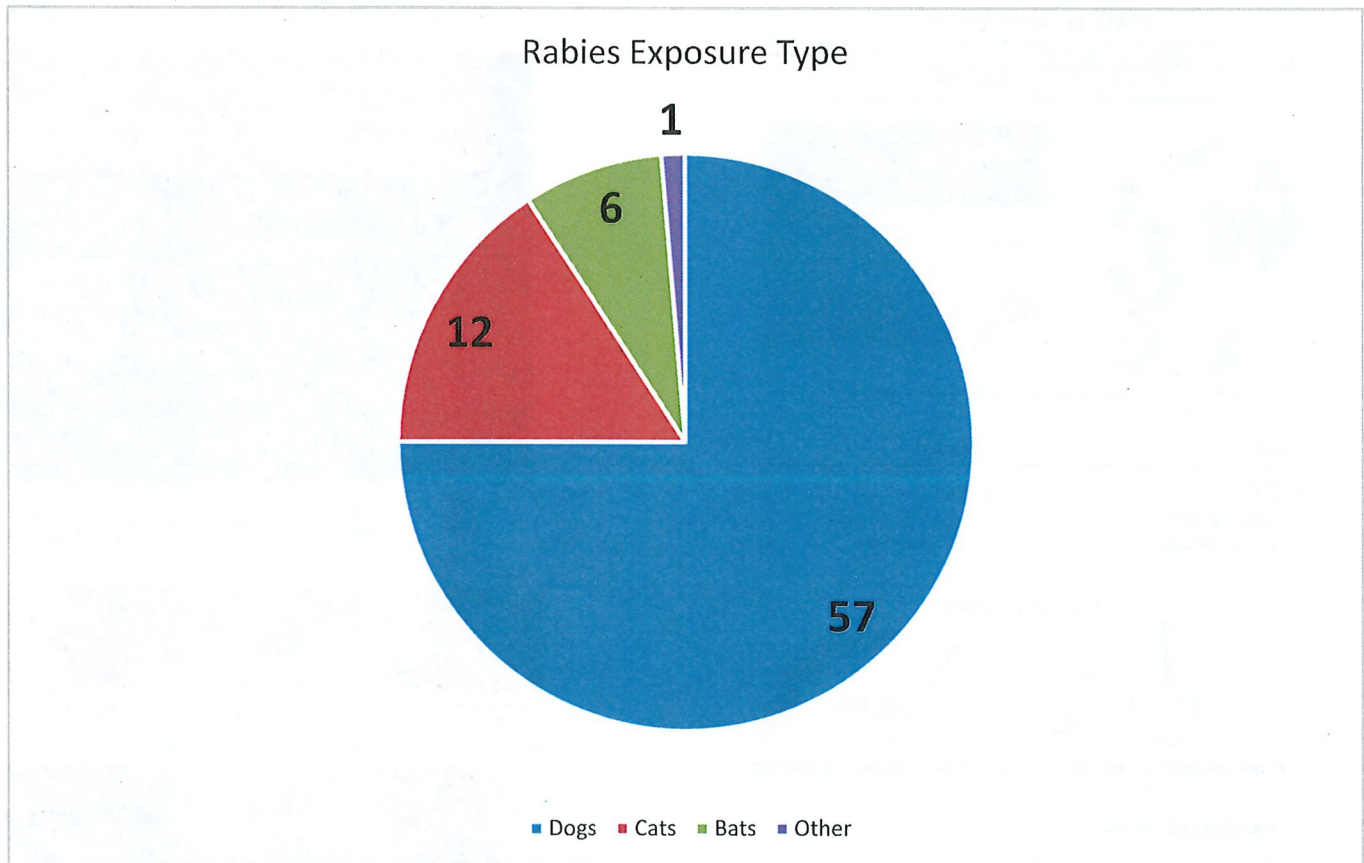


**Human Health Hazard Control:** Public health investigates complaints subject to the provision of the County Human Health Hazard ordinance. Goals are to protect the health of the public from illness and disease caused by human health hazards.



- 15 Health hazard complaints investigated in 2022
  - Investigations included housing, garbage accumulation, hoarding, septic issues, pests/vermin, unsanitary conditions

**Rabies Prevention:** Public Health works with area hospitals, veterinarians, and our animal control officer to investigate and monitor animal contacts that could transmit rabies. In 2022, 76 animal exposures were reported to Barron County Public Health.





# Essential Service #3: INFORM AND EDUCATE

*Inform, educate, and empower people about health issues*

In 2022, Barron County Public Health used social media, local newspapers, and radio as well as our partner's networks to bring important information to the community. Our three outreach workers helped us reach the Somali and Spanish communities in the most culturally and linguistically appropriate ways. Information regarding the pandemic and other public health services was sent out in English, Somali and Spanish.

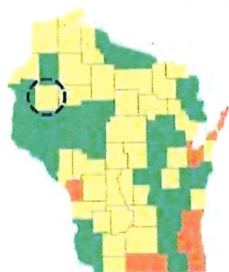
*Weekly reports were sent out and posted to social media.*

## Barron County COVID-19 WEEKLY REPORT

### COVID-19 Community Level

COVID-19 Community Levels are a new tool to help communities decide what prevention steps to take based on the latest data. Levels can be low, medium or high and are determined by looking at hospital beds being used, hospital admissions, and the total number of new COVID-19 cases in an area. Take precautions to protect yourself and others from COVID-19 based on the COVID-19 Community Level in your area.

\*These recommendations DO NOT APPLY IN HEALTHCARE SETTINGS such as hospitals and nursing homes.



COVID-19 Community Level	You Should
LOW	<ul style="list-style-type: none"><li>Stay up to date with COVID-19 vaccines.</li><li>Get tested if you have symptoms.</li></ul>
MEDIUM	<ul style="list-style-type: none"><li>Talk to your doctor about whether or not you need to wear a mask and take other precautions if you are at high risk for severe illness.</li><li>Stay up to date with COVID-19 vaccines.</li><li>Get tested if you have symptoms.</li></ul>
HIGH	<ul style="list-style-type: none"><li>Wear a mask indoors in public.</li><li>Stay up to date with COVID-19 vaccines.</li><li>Get tested if you have symptoms.</li><li>Take additional precautions as needed if you are at high risk for severe illness.</li></ul>

For more information, visit: <https://covid19.com/community-levels>

\*People may choose to mask at any time. People with symptoms, a positive test, or exposure to COVID-19 should wear a mask.

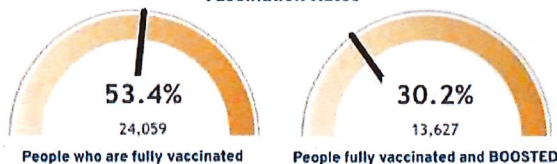
### Cases

**+74**  
Since Last Report  
13,368 total cases

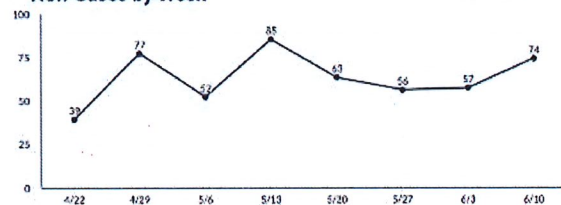
### Deaths

**+1**  
Since Last Report  
139 total deaths

### Vaccination Rates



### New Cases by Week



Updated 6/10/2022

## Pruebas de COVID-19 Sin gastos de bolsillo

Prueba de PCR nasal poco profunda  
Resultados dentro de 1-2 días después  
de recibir la muestra en el laboratorio

Obtenga una cita en  
[cur.tv/barron](https://cur.tv/barron)

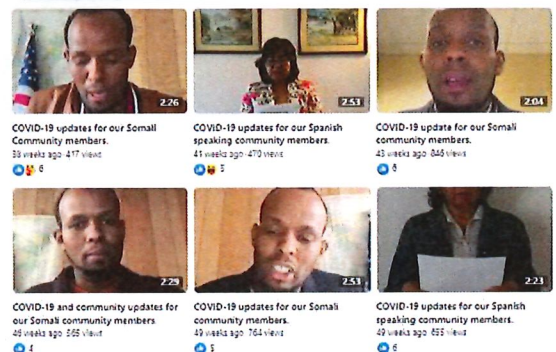


410 E LaSalle Ave.  
Suite B  
Barron, WI

Lunes - Viernes • 8 am - 4 pm



Busque un sitio de pruebas cerca  
de usted en [curative.com](https://curative.com)



*Videos and information posted to social media from our Spanish and Somali outreach workers helped communicate up to date information on the pandemic.*

# Essential Service #4: COMMUNITY ENGAGEMENT

*Mobilize community partnerships and action to identify and solve health problems*

## Partnerships

Barron County Public Health programs partner with multiple groups and organizations to share resources and address community health issues.

## Thrive Barron County

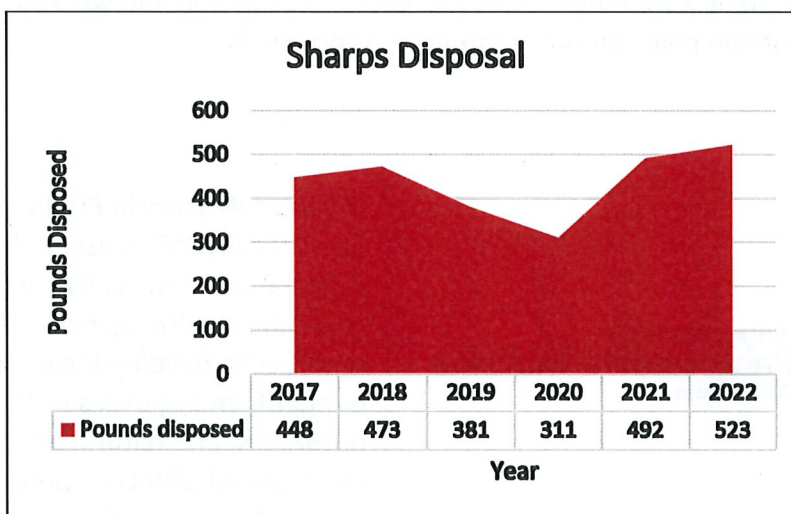
Thrive Barron County is a unique partnership that has been collaborating on health solutions since 2011. Thrive focuses on the top health concerns identified by the community through the Community Health Assessment. Our current priorities are: Substance Use, Mental Health, and Chronic Disease Prevention & Management.



## Sharps Disposal

Public health offers residents safe disposal of needles, lancets, and other bio-hazardous sharps. Pick up your red container today!

Pick up & drop  
off your sharps  
containers at  
Public Health!







Community Connections to Prosperity is a coalition working to create an understanding of how poverty impacts our community. Public Health is an active member of the coalition. A highlight of 2022 includes the first of its kind Community Connections Conference that featured programs proven to be successful and teach skills on how to best advocate for issues in local communities. Attendees heard from communities that have implemented innovative programs and projects to create meaningful change and walked away with skills and ideas on how to put their ideas into action and make a difference in their own community.

The Barron County Community Coalition; *Where Community & Collaboration Grow* is a network of businesses, organizations and community members working together to create healthier and safer communities in Barron County. The Coalition works to bring community partners to the same table and implements youth substance use prevention efforts. Public Health provides resources and staff time to implement coalition objectives. Highlights of 2022 include the Community Conversation events. These four events, spread out over the year, were hosted by the coalition to draw in new community members and agencies and gain buy in and support of the initiatives. An average of 40 new members attended each conversation and worked to complete action plans on the community's top needs.



**Western Wisconsin Public Health Readiness Consortia (WWPHRC)**  
The Western Wisconsin Public Health Readiness Consortia is a regional consortia consisting of 17 local public health agencies and two tribal health agencies. The purpose of the consortia is to work together to develop local capacity to effectively respond to all types of health emergencies including bioterrorism, infectious disease outbreaks, and natural disasters. Time was spent in 2022 evaluating our regional COVID response and creating after action reports with actions to improve response. The Consortium worked together to advocate for state resources around COVID testing and vaccination, created shared messaging, and updated preparedness plans.

# Essential Service #5: POLICIES AND PLANS

*Develop policies and plans that support individual and community health efforts*

## 2022-2025 Community Health Improvement Plan

- 1) Substance Use
- 2) Mental Health
- 3) Chronic Disease Prevention & Management

### Substance Use



Public Health continues to work with partners and the Barron County Community Coalition to reduce youth substance use, decrease methamphetamine use, and reduce youth and adult tobacco use in Barron County. A sample of 2022 activities included the training of two officers in the Prime for Life program (an alternative sanction for underage drinking) and the promotion of the Narcan Direct program to address a recent spike in overdose deaths in the county.

### Mental Health



QPR stands for Question, Persuade, and Refer. People trained in Question, Persuade, Refer learn how to recognize the warning signs of a suicide crisis and how to question, persuade, and refer someone to help. In 2022, our facilitator was able to train 76 community members. In addition, two public health staff members were trained in Youth Mental Health First Aid and held a no cost workshop in August for adults who work with youth.

### Chronic Disease Prevention & Management



Thanks to a partnership between the UW-Extension Barron County Food Wise Program, Barron County Department of Health and Human Services, and Country Lane Farmer's Market and Pantry supported by donations from Mayo Clinic Health System and Cupboard and Closet, a new program was started this year to increase access to fresh fruits and vegetables. People can now use Quest/EBT benefits, as well as debit or credit cards, and turn them into tokens to purchase foods at Country Lane Farmer's Market. This has helped increase access to fresh fruits and vegetables for many in Barron County.



# Essential Service #6: PUBLIC HEALTH LAWS

*Enforce laws and regulations that protect health and ensure safety*

Wisconsin state statutes and county ordinances are written to protect the public. Public health professionals are tasked to enforce laws that protect the public's health.

**DNR Well Water Program:** Public health is an agent for the Department of Natural Resources to inspect and sample transient non-community wells. The program requires annual testing for bacteria and nitrates for any well that has public access to water for at least 25 people a day and 60 days of the year.

**Outcomes:**

- All 160 transient non-community wells were sampled
- 43 sanitary surveys (well inspections) were completed
- 11 quarterly/monthly bacteria samples taken
- 117 annual site visits completed
- 17 follow up samples (in response to positive samples)



**Rachel Henke**

Environmental Health  
Specialist

**Taylor Myers**

Environmental Health-  
Administrative Assistant

**Mackenzie Benda**

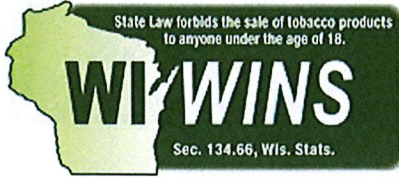
Environmental Health  
Specialist

## Department of Ag, Trade & Consumer Protection & Department of Safety & Professional Services

**Agent Program:** Barron County is an agent for the Department of Ag, Trade & Consumer Protection to license and inspect retail food outlets, restaurants, hotels, motels, swimming pools, campgrounds, bed and breakfasts, tourist rooming houses, and the Department of Safety and Professional Services to license and inspect tattoo and body piercing establishments. Eight facility complaints were investigated in 2022.

Facility Type	# Facilities	# Routine Inspections	# Pre-Inspections	# Re-Inspections/Follow Up
Retail Food Establishment	386	221	49	192
Body Art Facilities	7	2	0	2
Campgrounds	52	43	8	17
Hotels/Motels/TRHs	189	131	52	91
Public Swimming Pools	26	19	1	10
Rec Ed Camps	3	3	0	0

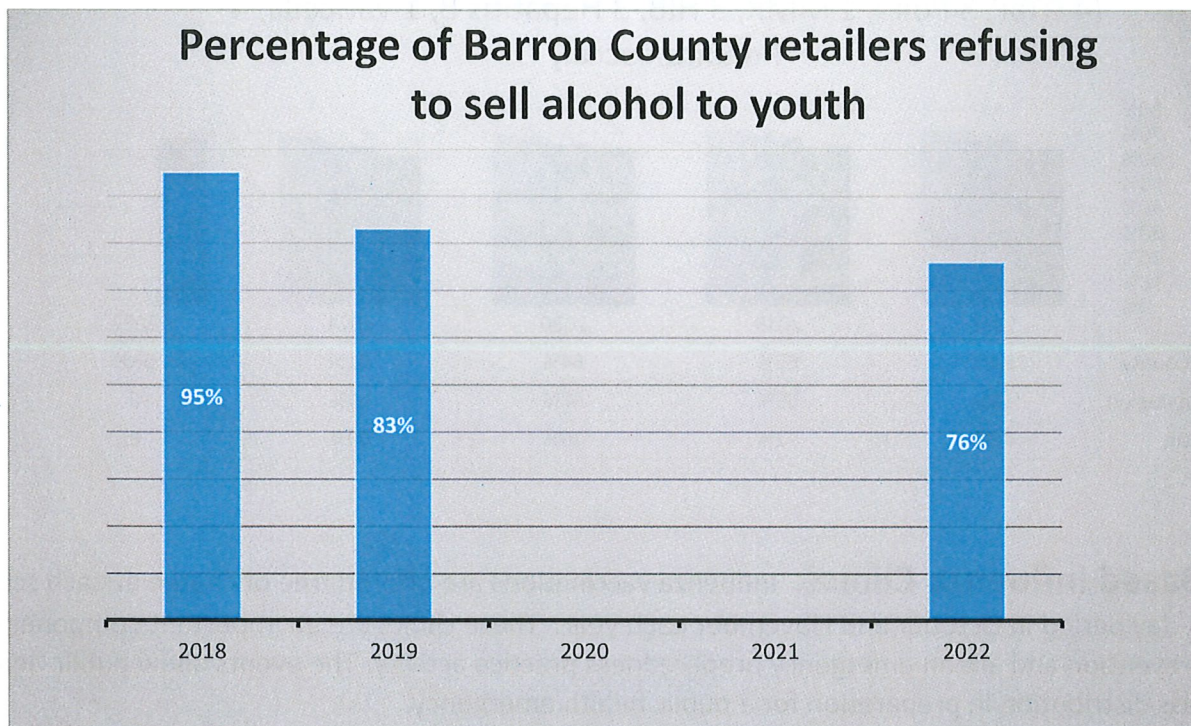
- **Total Inspections (Routine, Pre-Inspection, Follow Up, Re-Inspection, Etc.)= 883**



**Tobacco Compliance Checks: WI Wins** uses positive reinforcement to reduce illegal tobacco sales to minors. It congratulates local clerks who do not sell tobacco to youth, while educating those who would. In 2022, youth volunteers used their legal identification to attempt to purchase nicotine products at 44 retailers. Four of them sold tobacco to youth under 18. (Due to COVID-19, WINS checks were not done in 2020/2021.)



**Alcohol Age Compliance Checks:** Due to COVID-19 alcohol compliance checks were not conducted in 2020 or 2021. Data for 2022 alcohol age compliance checks shows that 4 out 17 establishments sold to underage youth.





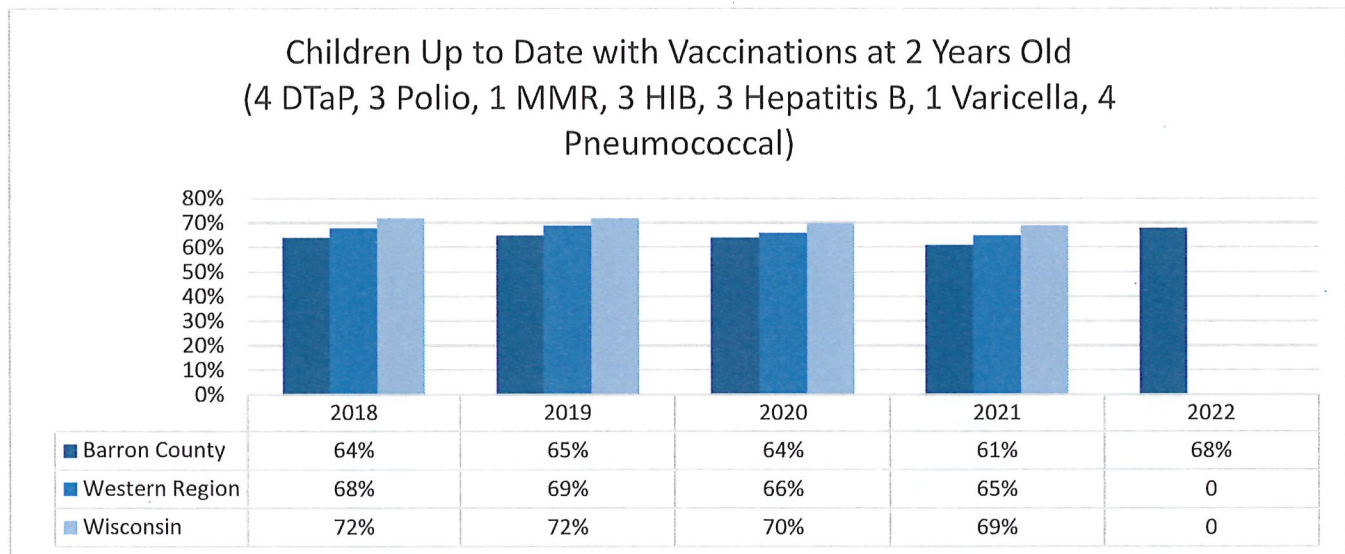
## Essential Service #7: ACCESS TO CARE

*Promote strategies to improve access to health care services*

**Immunization Program:** Immunizations are one of the most important public health victories. Barron County Public Health provides no cost vaccinations to qualifying children and adults through the Vaccines for Children and Vaccines for Adults program. Public Health currently stocks vaccines for: COVID-19, Diphtheria, Haemophilus influenzae type b (HIB), Hepatitis A, Hepatitis B, Human Papillomavirus (HPV), Influenza (Flu), Measles, Meningococcal disease, Mumps, Pertussis (Whooping Cough), Polio, Rotavirus, Rubella, Streptococcus pneumoniae, Tetanus, and Varicella (Chicken Pox).

### Childhood Vaccinations

A common measure of childhood vaccine coverage is the percent of two year olds up to date on recommended vaccinations. State and Western Region 2022 data is unavailable at this time.



**School-Based Influenza Clinics:** Influenza vaccinations are offered free of charge at each school during a 30-day period in October and November each year. These clinics are an important component of influenza prevention and are an emergency preparedness practice activity. The events allow public health to practice mass distribution in preparation for a public health emergency.

2022 School Based Influenza Vaccination Clinics						
	2022 Number Vaccinated	2022 Total School Enrollment	2022 Percent Vaccinated by PH	2021 Percent Vaccinated by PH	2020 Percent Vaccinated by PH	2019 Percent Vaccinated by PH
TOTAL	512	7206	7%	8%	13%	12%



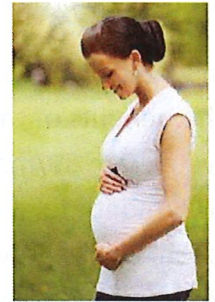
## COVID-19 Vaccinations:

Public Health administered 2302 doses of COVID-19 vaccines. The vaccines were offered at multiple sites throughout 2022:

- Walk in clinics at the Government Center, UWEC-BC, area schools, and the public health office
- Long term care facilities, community based residential facilities, and assisted living centers
- Barron County Jail
- In-home vaccinations for those unable to travel to a clinic

## Healthy Beginnings +

Services for Medicaid eligible pregnant women at high risk for adverse pregnancy outcomes. Healthy Beginnings + provides services to reduce medical and non-medical factors that contribute to the psychosocial, behavioral, environmental and nutritional factors of high-risk pregnant women. **Eighteen** pregnant women received case management services through the program in 2022.



## Reproductive Health Services

The reproductive health program works to decrease the number of unintended pregnancies and sexually transmitted infections through reproductive health education and direct services. We provide low or no cost sexually transmitted infection testing, reproductive health clinical services, and we assist community members in signing up for Medicaid programs, including Family Planning Only Services. In 2022, we provided care for **138 women** and **90 men**. This is an increase from the year prior. During the year, RHS nurses were able to start providing presentations on family planning in the schools again, dedicate an office for client visits, and start promoting services at county events.

## Birth to 3 Program

The Birth to 3 Program is Wisconsin's early intervention program for infants and toddlers with developmental delays or disabilities and their families. A federal law, The Individuals with Disabilities Education Act, provides a framework for a comprehensive program for coordinating developmental, health and social services within the family's community. The Wisconsin Department of Health Services oversees the Birth to 3 Program in Wisconsin.

Year	# New Referrals	# Declined/ Family Unreachable after multiple attempts	# Newly Enrolled	# Screened Out/ Not Eligible	# Referred to schools for continued services at age 3	Total Families Served in the Year
2022	111	39	72	11	38	167
2021	153	56	83	14	29	139
2020	115	55	48	12	22	101
2019	158	61	59	38	25	126
2018	137	57	47	33	44	126

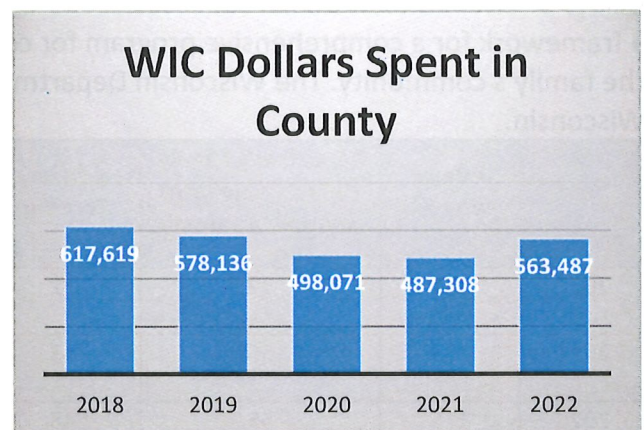
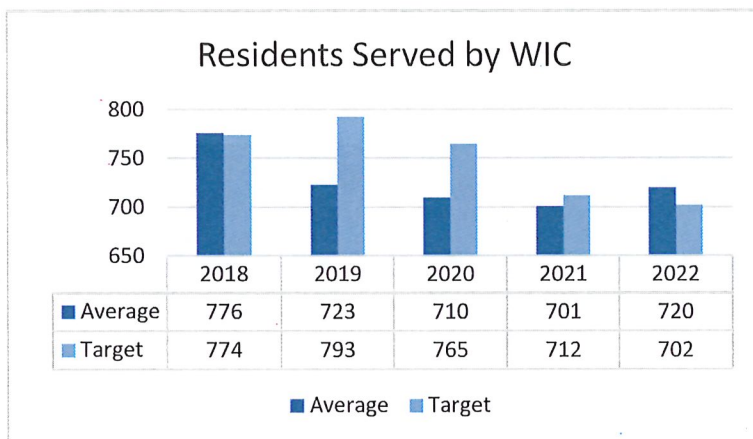
## WIC (Women, Infants, & Children)

WIC provides nutrition education, breastfeeding education and support, supplemental nutritious foods, and connections to other community services for pregnant and breastfeeding women, infants, and children less than 5 years of age. The Barron County WIC program is also able to provide additional breastfeeding support, by offering breastfeeding education and support through the Breastfeeding Peer Counselor program. The Breastfeeding Peer Counselor is a mother from the community with personal breastfeeding experience that can relate to other breastfeeding mothers and who is trained to assist other mothers on their breastfeeding journey by providing on going breastfeeding education and support.

In 2022, there was an increase in WIC dollars spent in Barron County. Additionally, WIC was able to enhance the benefits of the families enrolled in WIC by increasing the fruit and vegetable cash value benefit. Children went from \$9/month to \$25/month and pregnant, postpartum, and breastfeeding women went from \$11/month to at least \$44-\$49/month. WIC continues to provide additional funds to families to purchase fresh, locally grown produce at local farmer's markets each summer through the Farmer's Market Nutrition Program. There was also an increase in FMNP monies spent in 2022.

The WIC program faced a unique challenge in 2022 related to a large-scale recall of WIC's contract formula Similac, as well as, a formula shortage across many substitute brands. Many WIC families struggled to find formula to feed their babies. In Wisconsin, the State WIC program was able to obtain contract waivers that allowed the program to offer over 100 alternative non-contract formula options for WIC families to purchase using their WIC benefits.

WIC continues to receive the Fit Families grant, which works with 25 families to provide enhanced services to help to reduce childhood obesity.





# Essential Service #8: WORKFORCE

*Assure competent public and personal health care workforce*

## 2022 Students

Public health works closely colleges and universities to provide observation and project based learning for nursing, medical and other health profession students. In 2022, we hosted students from UW - Eau Claire, Northwood Technical College, and Grand Canyon University. Exposure to public health programs often leads to future careers in public health.

**1 - UWEC Student**

**21 - Northwood Technical College Students**

**1 - Grand Canyon University Student**



## We Care Barron County

We Care is a statewide initiative to bring awareness and educate community members on the caregiver crisis. Public Health joined the Aging and Disability Resource Center and several other care providers to actively work to recruit and retain caregivers in our community. In Wisconsin one in four caregiver positions are currently unfilled.

# Essential Service #9: PERFORMANCE MANAGEMENT AND QUALITY IMPROVEMENT

*Evaluate effectiveness, accessibility, and quality of personal and population-based health services*

## **Qualitative Data Grant**

Public health applied for and received a Wisconsin Department of Health Services grant to gather input from diverse populations on ideas and barriers for health improvement. This information will be used to help us improve health outcomes for those in our community who experience the disproportionate impact of health inequities. The \$35,000 grant will run from 6/1/2022 to 5/31/2024.

## **Maternal Child Health Grant**

Public health received a two year grant to work with our residents of Somali descent. The goal of the grant is to train and empower two community health workers to work with Somali women to connect them to resources to improve the health of their families. The grant also seeks to improve early childhood learning and school readiness. This project is funded by the Wisconsin Partnership Program at the University of Wisconsin School of Medicine and Public Health. The \$150,000 grant will run from 11/1/2022 to 10/31/2024.

## **140 Review**

The Wisconsin Department of Health Services is required to formally review the operations of all Wisconsin Local Health Departments every five years. The review establishes the health department as a level I, II, or III agency. A level I agency meets the minimum requirements and a level III meets the maximum requirements established for local health departments. Due to the pandemic, Barron County Public Health Programs completed an abbreviated 140 review in 2020 and was approved as a level II agency. Public Health will undergo a full 140 review in 2023.

## **After Action Reports (AAR)**

AAR's are documents that record what went well and what needs to be improved when an extraordinary action is taken. The documents help us learn how to improve for future events. In 2022, Public Health participated in three after action reports in response to the COVID-19 pandemic. Public health also completed an AAR for its influenza vaccination clinics.



## Essential Service # 10: Evidence based practices

*Research for new insights and innovative solutions to health problems*

Most programs public health offers are evidence based. From substance use prevention, to food inspections, to immunizations, scientific evidence guides what we do and promote. Below are some of the programs public health helps provide to our community.

**Living Well with Diabetes** is an evidence based program hosted by the Barron County Aging and Disability Resource Center (ADRC). One of our public health registered dietitians, who also works in the WIC program, partners with the ADRC to help facilitate this course.

**Question, Persuade, Refer (QPR)** sessions were held virtually and in person. This program trained 76 community members to recognize the signs that someone may be considering suicide, how to talk to them about what they see, and how to help them access professional care.

**Youth Mental Health First Aid (YMHFA)** is an evidence-based program that teaches participants how to identify, understand and respond to signs of mental health and substance use challenges among children and adolescents ages 12-18. Two public health staff were trained in the program in July and taught a class to school and community participants in August 2022.

## MANAGEMENT & GOVERNANCE

*Maintain administrative and management capacity & maintain capacity to engage the public health governing entity*

### **Barron County Health & Human Services Board**

The Barron County Health & Human Services Board is made up of elected members and appointed community members and meets on the 4<sup>th</sup> Monday of each month at 9:30 am at the Barron County Government Center. Due to the pandemic, a virtual option was added to board meetings.

#### **2022 Board Members:**

Karolyn Bartlett - Chair, County Board Representative

John Banks - Vice Chair, County Board Representative

Carol Moen - Executive Representative, County Board Representative

Randy Albrecht - Citizen Representative

Patti Anderson, County Board Representative

Jerry Apfel, Citizen Member

Robert Heil, Citizen Member

Toniann Knutson, RN, Citizen Member

Lynn Kolpack, Citizen Member

Richard Sampson, MD, Citizen Member

Diane Vaughn, County Board Representative

Stacey Wenzel, County Board Representative

# COVID-19 RESPONSE

## COVID Overview

- First Case Reported in Wisconsin - February 5, 2020
- State Safer at Home Order issued - March 24, 2020
- First COVID-19 case reported in Barron County - April 1, 2020
- First Death in Barron County - June 29, 2020
- Pfizer and Moderna COVID Vaccinations receive Emergency Use Authorization (EUA) in December 2020
- Johnson & Johnson COVID-19 vaccine receive EUA in February 2021
- Barron County Public Health held its first COVID-19 vaccination clinic on 01/21/21
- Public Health, with community volunteers, administered 10,837 doses of COVID-19 vaccines in 2021
- More than 40 working and retired physicians, nurses, EMTs, paramedics, and others volunteered their time to help vaccinate our community.
- On August 31, 2022 Pfizer and Moderna bivalent vaccine booster doses received Emergency Use Authorization.
- On October 19, 2022 Novavax received Emergency Use Authorization as a 4<sup>th</sup> COVID-19 vaccine.
- 2302 doses of COVID-19 vaccinations were administered by Barron County Public Health in 2022

## 2022 COVID-19 Data

Total COVID-19 cases - 5460 confirmed, probable and suspect cases reported to public health

Total COVID-19 related deaths - 32

COVID-19 Community Outreach Workers - 1-Somali, 2-Spanish

LTE part time contract staff employed for COVID-19 response - 10

## Communication

- Weekly reports posted to social media and sent to local media
- Press releases sent out – 40
- Information videos made- 30 (multiple languages)

Barron County held regular meetings with regional health departments, long-term care facilities, schools, healthcare systems and the state throughout 2022.

For questions or comments on the Public Health Programs Report please contact Laura Sauve, Public Health Program Manager at 715-537-6109 or [laura.sauve@co.barron.wi.us](mailto:laura.sauve@co.barron.wi.us)



# YOUTH AND FAMILIES UNIT

## Program Managers/Lead Worker



**Karla Broten**  
Youth and Families  
Program Manager



**Mary Olsen**  
Children's Services  
Program Manager



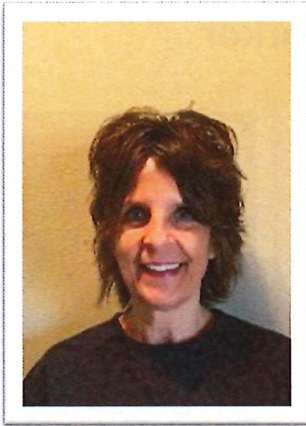
**Laura Doeberiner**  
CPS Lead Worker

Karla Broten, Mary Olsen and Laura Doeberiner supervise and support the Youth and Families Unit, supervising 33 workers, with a wide variety of job responsibilities, including working with children and families due to concerns of abuse or neglect. Additionally, there are programs in the unit that are voluntary in nature, and work to support vulnerable children in our community through supportive services. These programs include Children's Long Term Support (CLTS), Children's Community Options Program (CCOP), and Comprehensive Community Services (CCS).

Barron County Youth & Families Unit continues to challenge ourselves to improve outcomes for children and families through participation in various programs/initiatives. Child Protection Services (CPS) and CCS partner to ensure that child and adult mental health needs are met in the community.



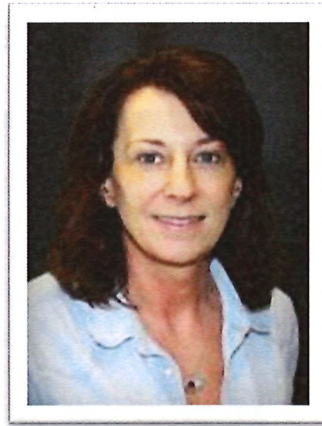
## SUPPORT STAFF



**Jodene Fenske**  
Administrative Assistant



**Erin Johnson**  
Administrative Assistant



**Ann Whittington**  
Administrative Assistant

Three full-time support staff assist workers in the completion of many tasks to support all of our programs. As the workload of the staff they support varies from voluntary services to mandated services with tight timeframes, these employees are able to adapt and prioritize their workload to meet the needs of the worker. With the consistent, prompt support of these workers, we are able to meet the needs of the children and families that the department works with every day.

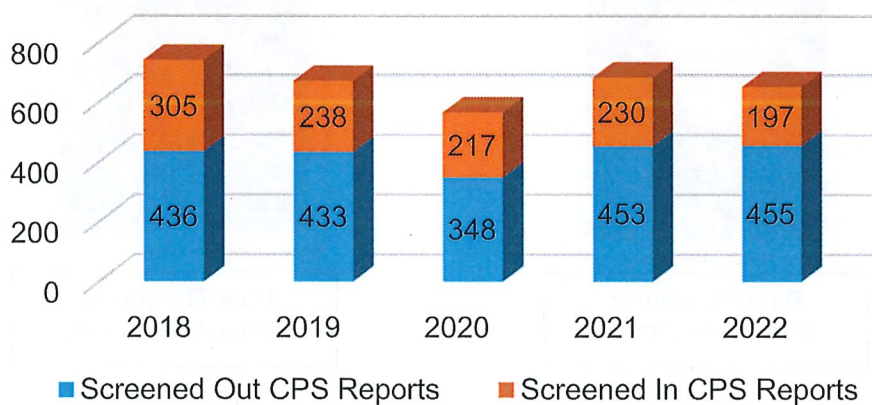
# ACCESS



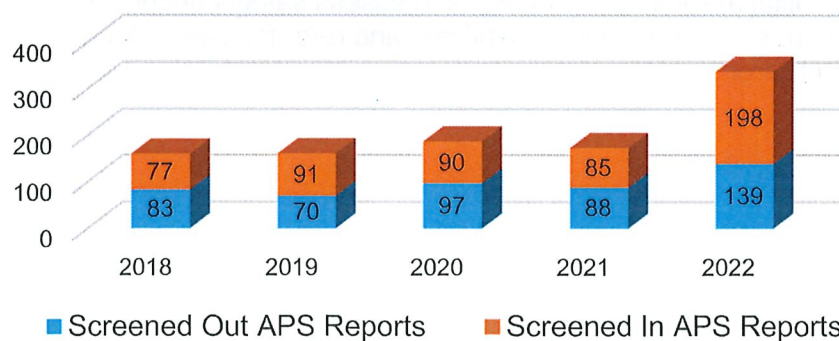
**Holly Hulback**  
Access Worker

Barron County employs one FTE to fulfill the role of Access. Critical information is gathered during the calls that determine if a case will be referred for CPS or Adult Protection Service (APS) assessment or outreach. Additionally, the Access workers make recommendations of resources that are available in the community or for other voluntary programs that may benefit their family.

### CPS reports



### Adult Protection Reports



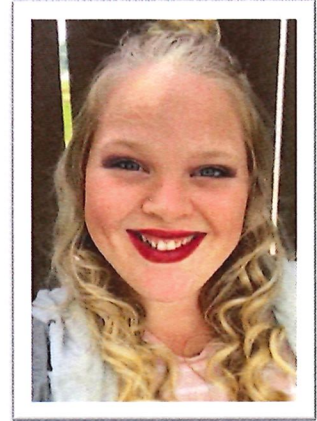
## INITIAL ASSESSMENT



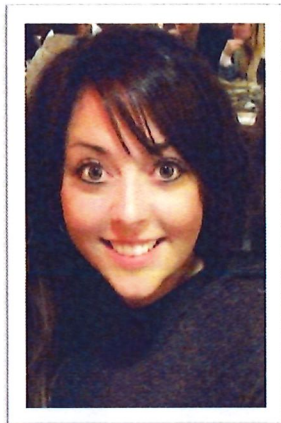
**Cearah Kjos**  
Initial Assessment



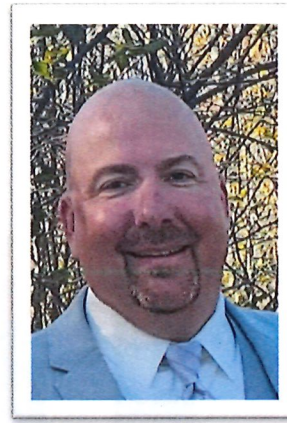
**Kristin Koger**  
Initial Assessment



**Kimberly Nerison**  
Initial Assessment



**Danielle Neurer**  
Initial Assessment

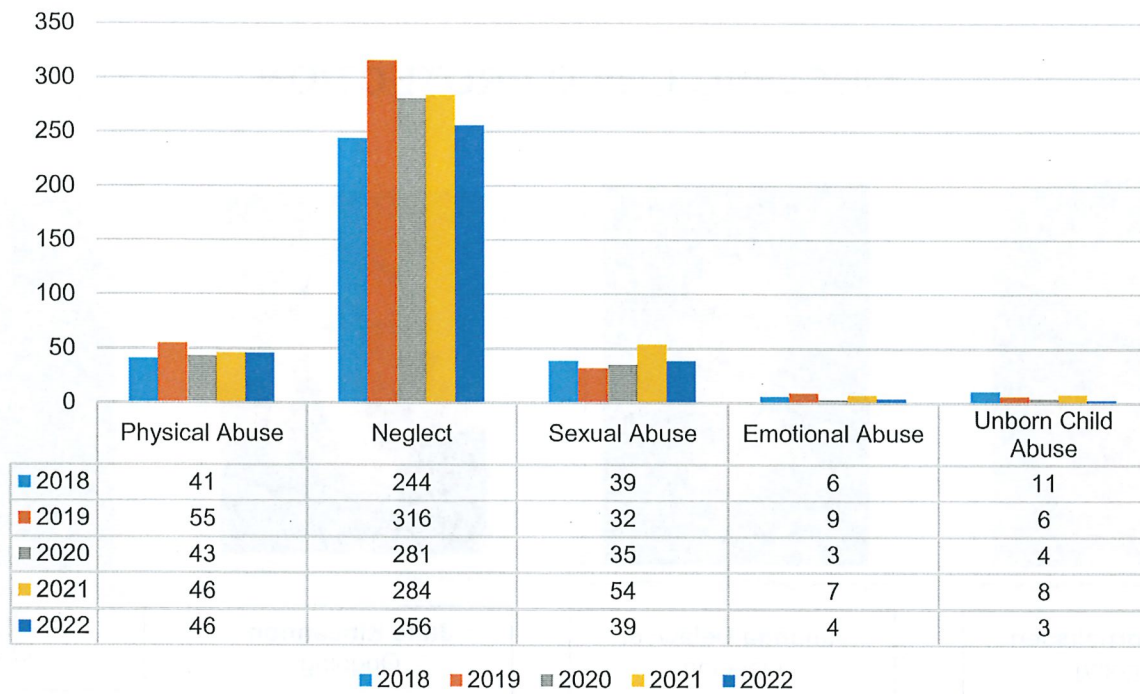


**Nick Thompson**  
Initial Assessment

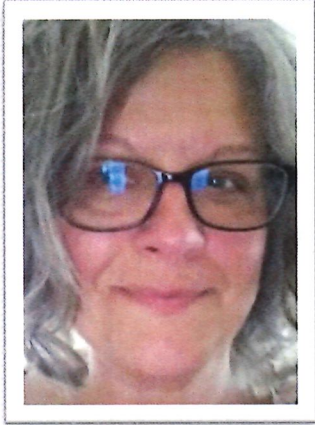
Barron County employs five FTE social workers who perform the function of Initial Assessment. Initial Assessments are open for 60 days, meaning that is the timeframe workers have to gather information from the child, parents, and collateral contacts to determine whether or not the family will require further intervention to assure their children are safe. The primary responsibility of CPS during the initial assessment process is to assess safety concerns of children, identify children who are in need of protection or services, and refer families to local resources that will help support their children.



## Screened in Child Protective Services Reports by Type



## ONGOING CHILD PROTECTION



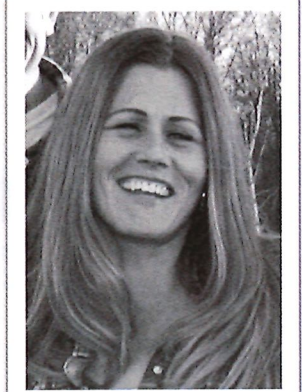
**Dawn Cornelissen**  
Ongoing



**Amanda Delawyer**  
Ongoing



**Julie Kincannon**  
Ongoing



**Holly Jensen**  
Ongoing



**Mary Matthys**  
Parent Education



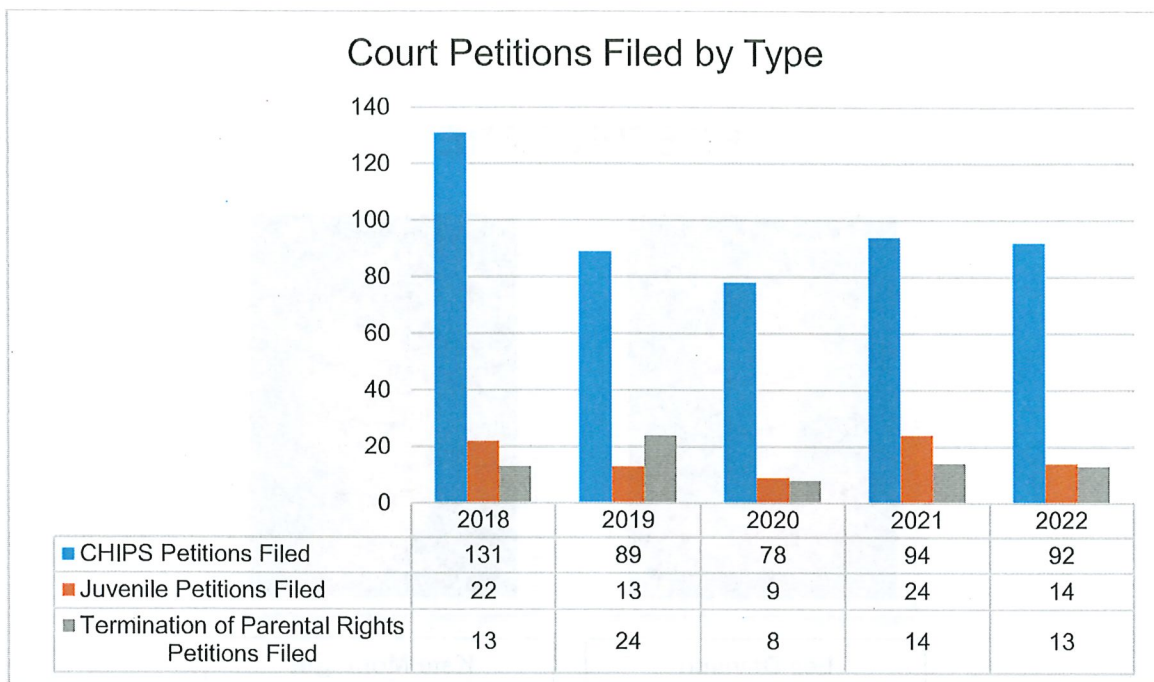
**Charity Moe**  
Ongoing



**Lindsey Zenkowich**  
Ongoing

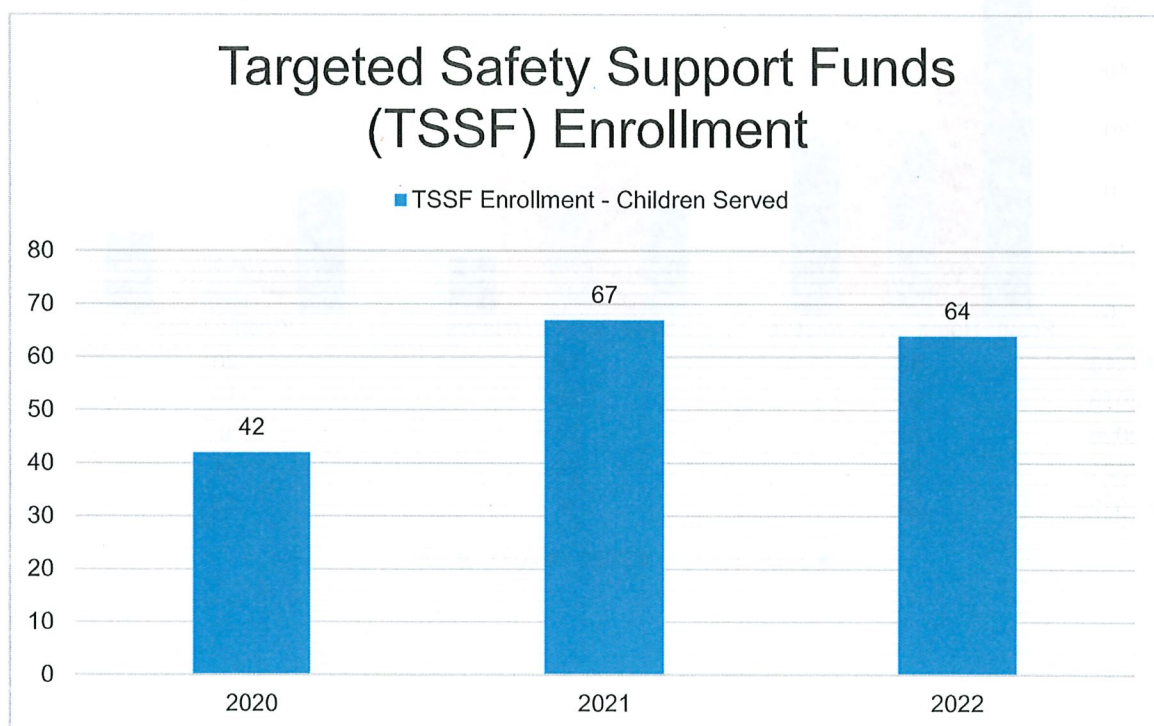
Barron County employs seven FTE social workers who perform the function of ongoing services. The ongoing team works with families who are under a Child in Need of Protection or Services (CHIPS) court order, Juvenile in need of Protection or Services (JIPS) court order, or delinquency court order. Ongoing workers work with families who have children on a court order and assist families in meeting the conditions of those orders. The worker's collaborate with a variety of agencies and informal supports to best meet these children's needs and assure their safety.





### Targeted Safety Support Funds (TSSF)

Wisconsin's Targeted Safety Support Funding (TSSF) serves families when children are unsafe and at risk of removal from their home. TSSF reduces trauma to children by keeping children safely in home with their families. It provides support and resources to build on family strengths. The primary goal of the Wisconsin Targeted Safety Support Funds (TSSF) Program is to keep families together by: 1) Increasing parental protective capacities 2) Decreasing out-of-home placements 3) Helping families develop formal and informal supports 4) Reducing maltreatment to children. Barron County Initial Assessment and Ongoing Social Workers have worked diligently to learn about the TSSF program and to use this funding to support in-home safety planning for children involved with the Child Protective Services.



## FOSTER CARE

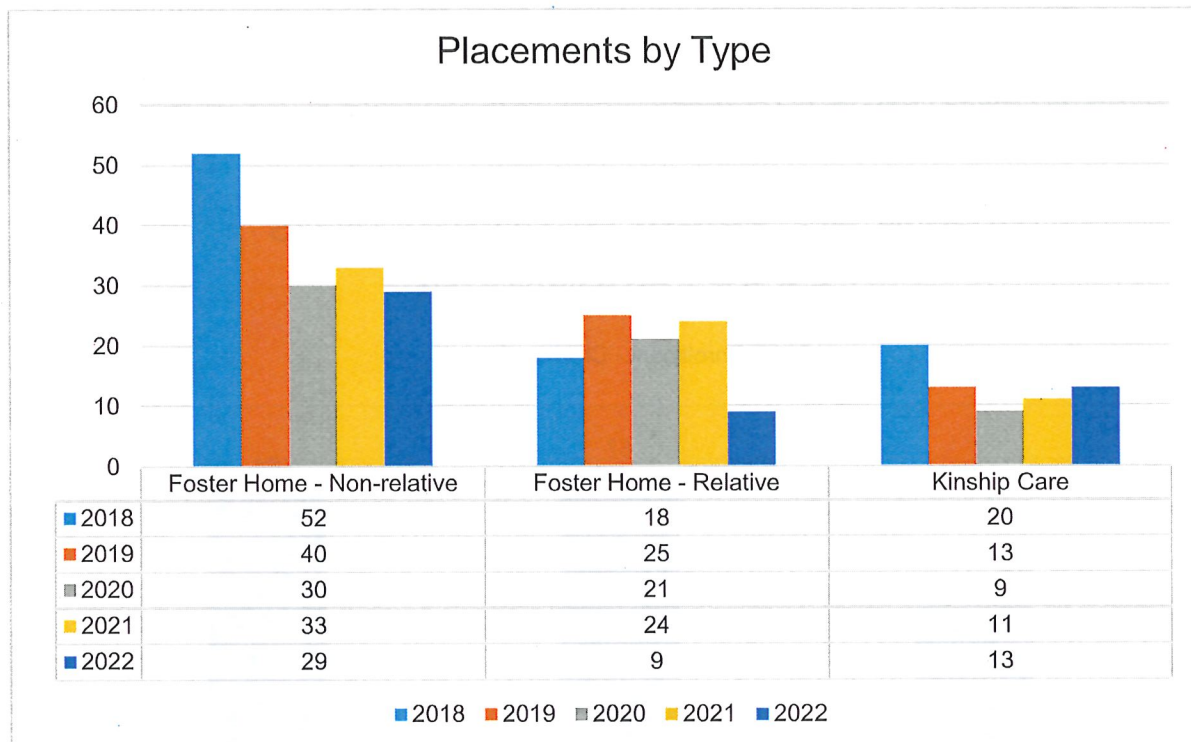


**Lee Davison**  
Foster Care Coordinator



**Kate Montague**  
Foster Care Coordinator

Barron County employs two FTE foster care coordinators. Foster care coordinators gather information, interview prospective foster parents, and determine whether or not they will become Barron County licensed homes. Additionally, Foster Care Coordinators support relative care providers. Relative care providers take in their relatives (grandchildren, nieces, nephews, etc.) often unexpectedly and often require support in accessing resources to be able to meet the needs of the children who are newly in their care.





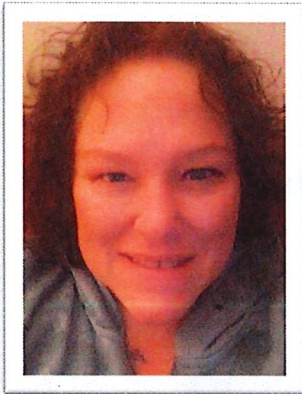
## FAMILY DRUG TREATMENT COURT (FDTC)



**Heidi Erickson**  
FDTC Coordinator



**Jessica Wager**  
Ongoing FDTC  
Social Worker



**Nicole Morales**  
Recovery Coach



**Breanna Showkeir**  
Recovery Coach



**Amanda Twitchell**  
Recovery Coach

In 2019, Barron County was awarded a \$646,951 federal grant from the OJJDP to create a Family Drug Treatment Court (FDTC) in Barron County. The FDTC program serves parents who have a substance use disorder and are involved with the child welfare system. The program aims to reunify parents with their children and improve the safety, well-being and stability of children in Barron County. The program requires participants to complete five different milestones before graduating the program. Within each milestone, several different requirements and activities need to be met before advancing to the next milestone. Examples of requirements include completing treatment for a substance abuse disorder, taking parenting classes, securing employment and stable housing, and maintaining sobriety.

Barron County has been able to add Recovery Coaching to the FDTC program through the Marshfield Clinic AmeriCorps – Recovery Corps program. Adding this layer of peer support to the FDTC program has been beneficial for the participants and providers.

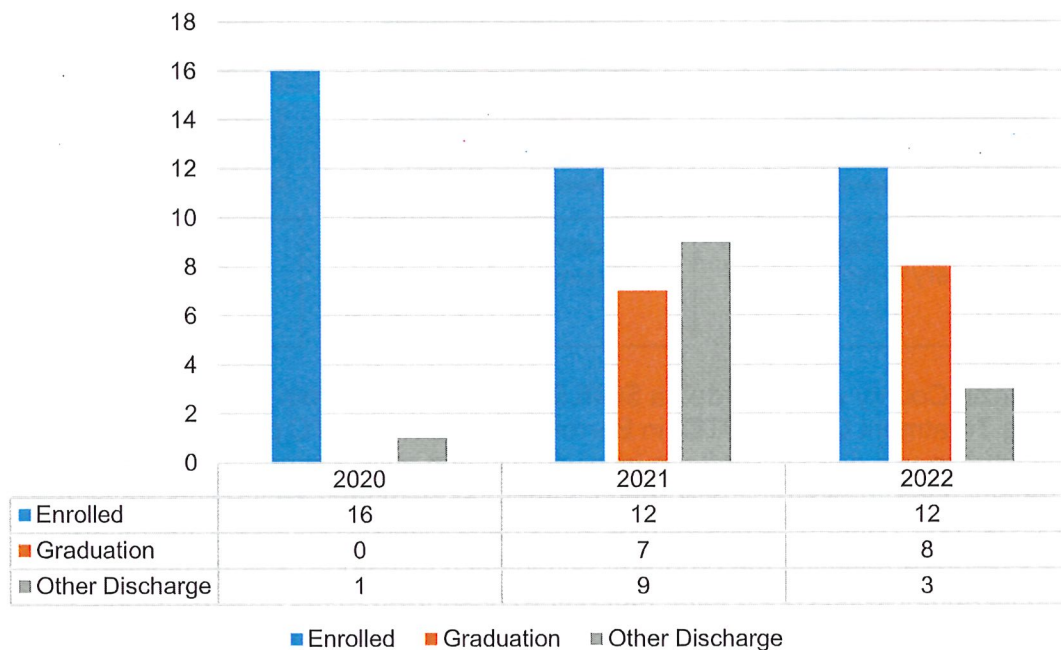




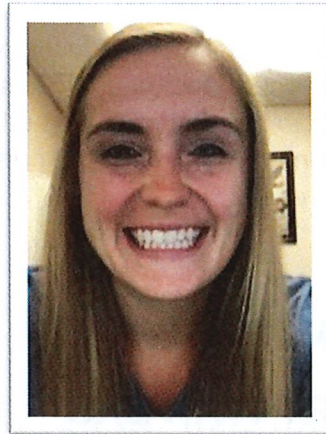
Judge Bitney with our first group of FDTC graduates wearing their "Hard Work Pays Off" shirts to celebrate graduation. Our first participants enrolled in the fall of 2020 and graduated in October - December 2021. Successful program completion takes 14-18 months.

We are very proud of the program graduates and all of the participants who have the courage to join FDTC to get help with Substance Use Disorders.

### Family Drug Treatment Court Data



## ADULT PROTECTION



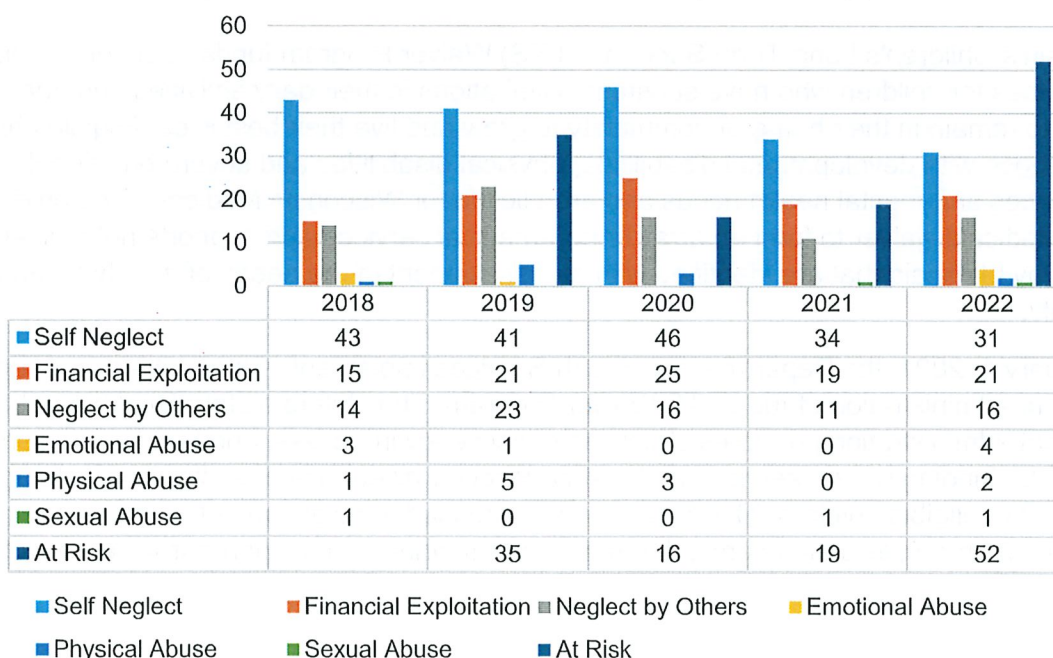
**Morgan Gannon**  
Adult Protection



**Courtney Minkel**  
Adult Protection

Two workers trained in adult protection procedures primarily complete adult protection services. The most common forms of abuse investigated by the agency were, again, those of self-neglect and caregiver neglect and financial exploitation. Other forms of abuse include physical, emotional, and sexual abuse, or any combination of the above. The adult protection worker often connects the individual with community resources, including the Aging and Disability Resource Center, Office on Aging, local community/senior centers, and medical or psychiatric services. In some circumstances, however, it is discovered that the adult at risk or elder is unable to care for themselves and is in need of guardianship and/or protective placement. If the individual is in need of guardianship, the adult protection worker either assists the family with the process or petitions the court to initiate proceedings.

Adult Protection Assessments by Case Type

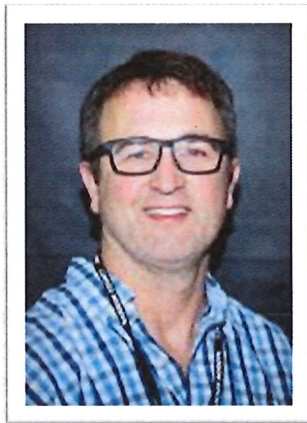




## CHILDREN'S SERVICES

Barron County has several programs for youth with special health care, developmental and mental health related needs. These programs assist the youth and their families on a voluntary level to help support the youth and his or her caregivers to better meet the youth's identified needs. Over the past few years, Barron County has seen an increase in the need for services and supports for children with significant mental health needs.

## WISCONSIN'S CHILDREN'S LONG-TERM SUPPORT WAIVERS



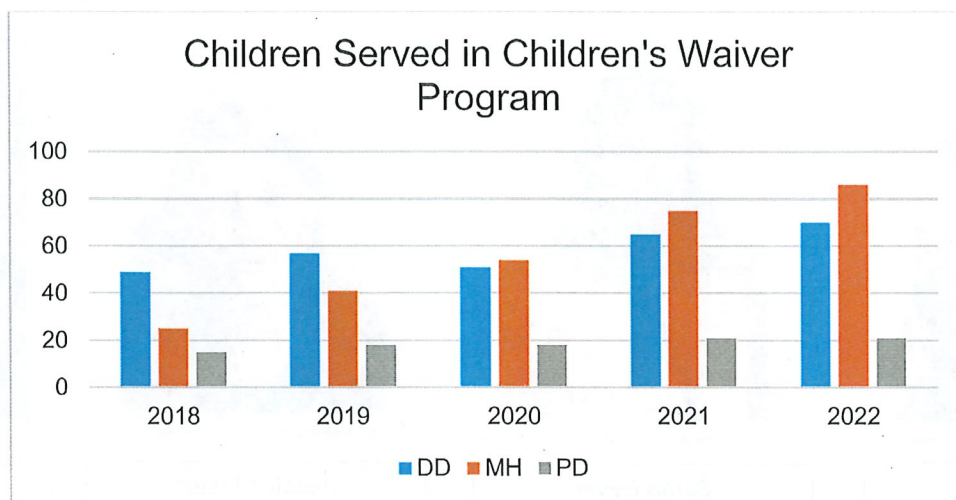
**Joe Stearns**  
Children's Long Term  
Support



**Brooke Thompson**  
Children's Long Term  
Support

Wisconsin's Children's Long-Term Support (CLTS) Waiver Program funds community supports and services for children who have substantial limitations in their daily activities and need support to remain in their home or community to grow and live their best lives. Eligible children include those with developmental disabilities, physical disabilities and severe emotional disturbances and mental health needs and are eligible for Wisconsin Medicaid. The program uses a Medicaid waiver to fund an array of non-medical services and supports not typically covered by Medicaid that are identified with an assessment of the needs of the child and his or her family.

On January 1, 2021, the Department of Health Services implemented the state-level budget and enrollment administration of the CLTS Waiver Program. The shift to a state-level budget and enrollment administration promotes statewide consistency in access, enrollment, and service planning by funding waiver services at the state level for all enrollments allowing continuous enrollment of eligible children. The change has decreased the wait-time of enrollment into the program, and provides state oversight to make sure funding can support enrollment across the state.





# COMPREHENSIVE COMMUNITY SERVICES

## YOUTH & FAMILIES



**Marcia Bednar**  
CCS/CLTS Case Manager



**Sarah Bever**  
CCS/CLTS Case Manager



**Jessica Flater**  
CCS/CLTS Case Manager



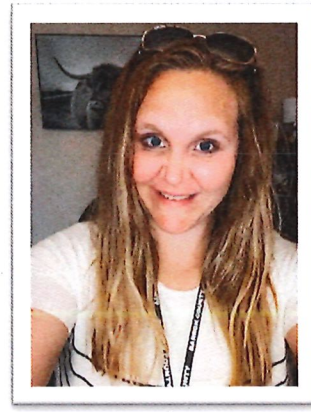
**Angela Lovelady**  
CCS/CLTS Case Manager



**Marina Revak**  
CCS/CLTS Case Manager



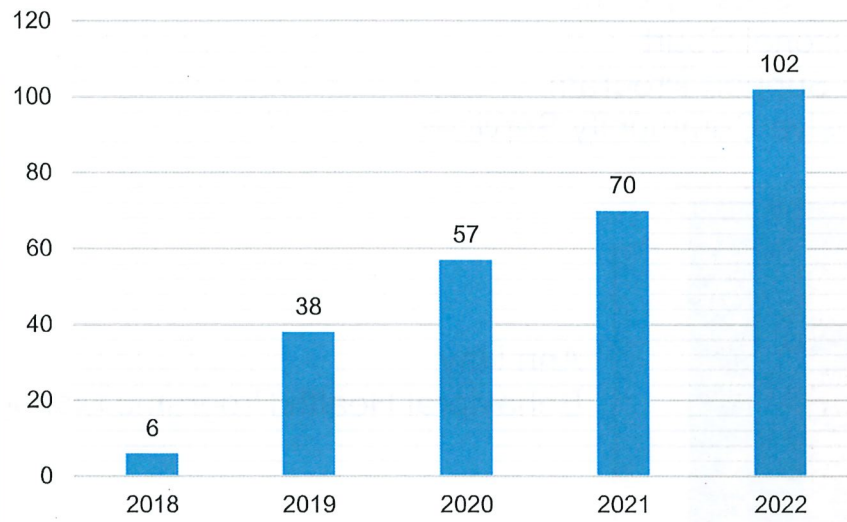
**Cole Schallock**  
CCS/CLTS Case Manager



**Amanda Slattery**  
CCS/CLTS Case Manager

Comprehensive Community Services (CCS) is a program that helps individuals live their best life by providing supports that address their unique needs related to mental health and substance use. In 2020, the youth CCS workers came under the general supervision of the Youth and Families Unit, as many children enrolled in CCS were also eligible for other voluntary programs including CLTS, CCOP and Coordinated Services Team (CST). This has allowed us to better serve youth and families with one case manager trained in the four Children's Service Programs to best utilize and support families with the appropriate funding. Barron County has seen a steady increase in the number of referrals for youth with mental health needs.

### Youth Served in Comprehensive Community Services (CCS)





# Behavioral Health Programs

- ❖ Crisis Follow-up & Linkage
- ❖ Barron Area Recovery Center
- ❖ Drug and Alcohol Court
- ❖ Community Support Program
- ❖ Comprehensive Community Services

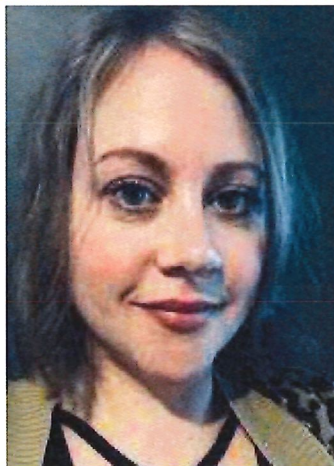


Ann Hay  
Behavioral Health Programs Manager

AJ Simon  
Behavioral Health Clinical Supervisor



## Behavioral Health Administrative Assistants



Ashley Dominick

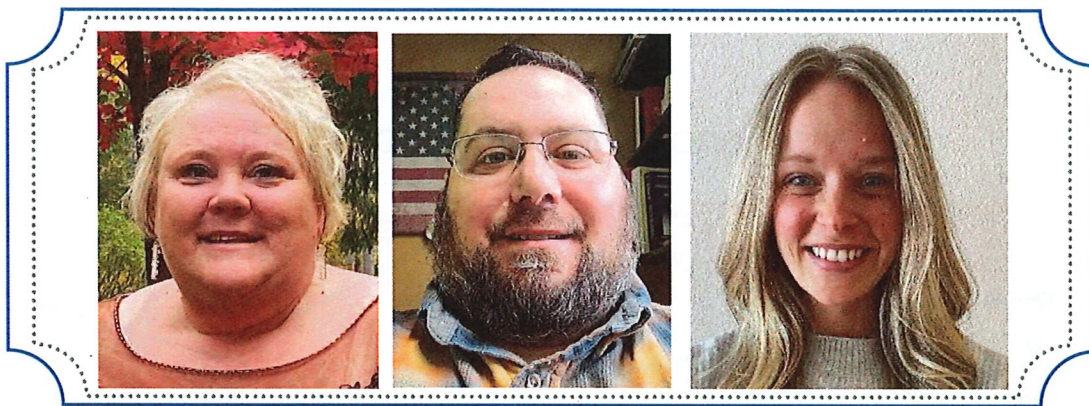


Alison Seemann

## Crisis Follow-up & Linkage DHS 34

Barron County provides emergency mental health services and follow-up case management through a state certified program. Services are provided to persons experiencing a mental health crisis, or are in a situation that could potentially turn into a mental health crisis without services. The program includes 24 hour telephone crisis support, mobile support, and crisis walk-in services during office hours.

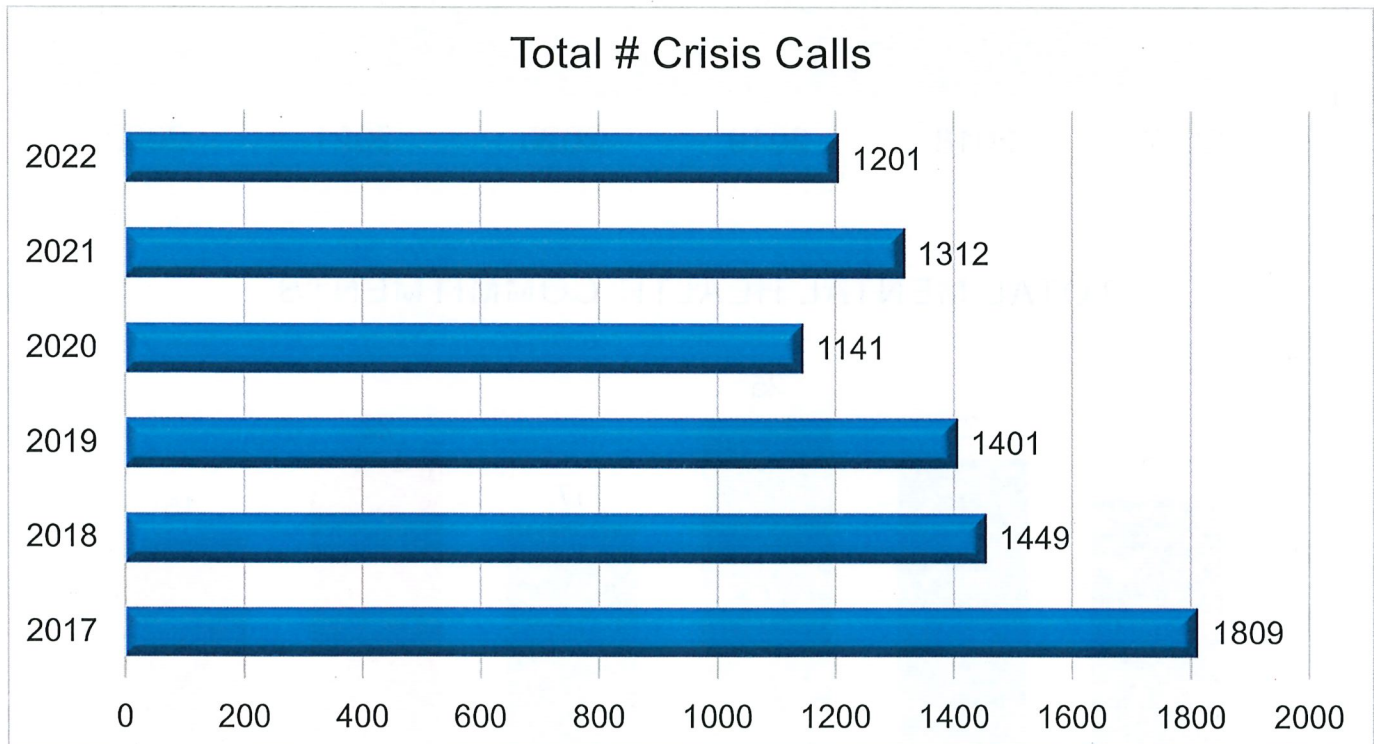
Program staff also provide follow-up case management services to citizens that are placed on a civil commitment and would benefit from additional supports.



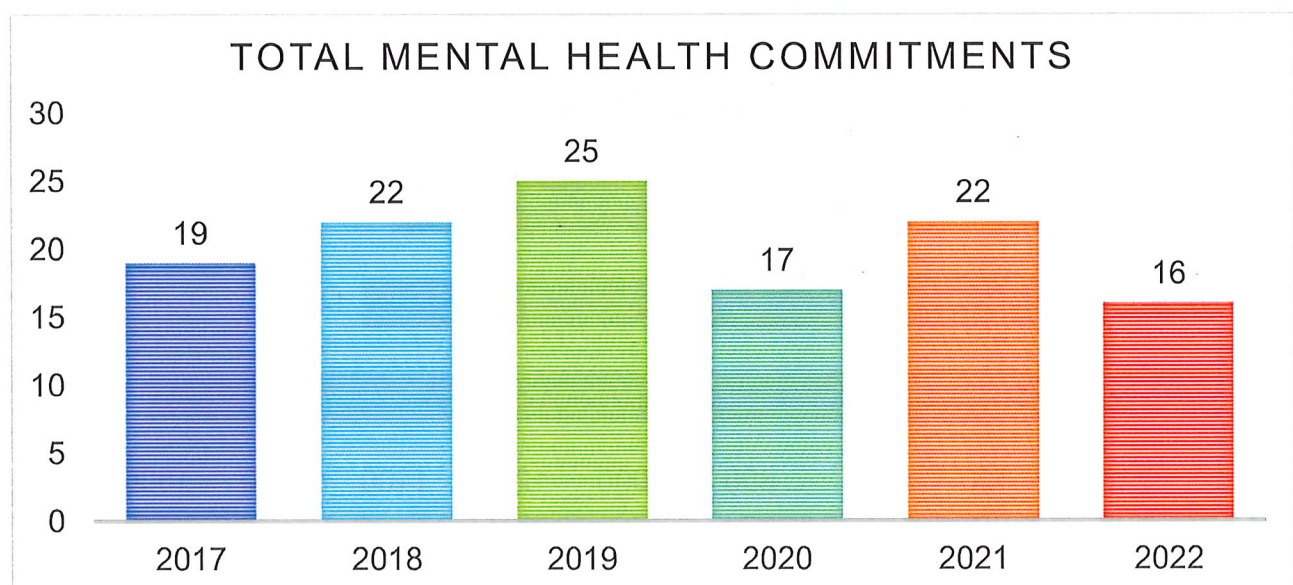
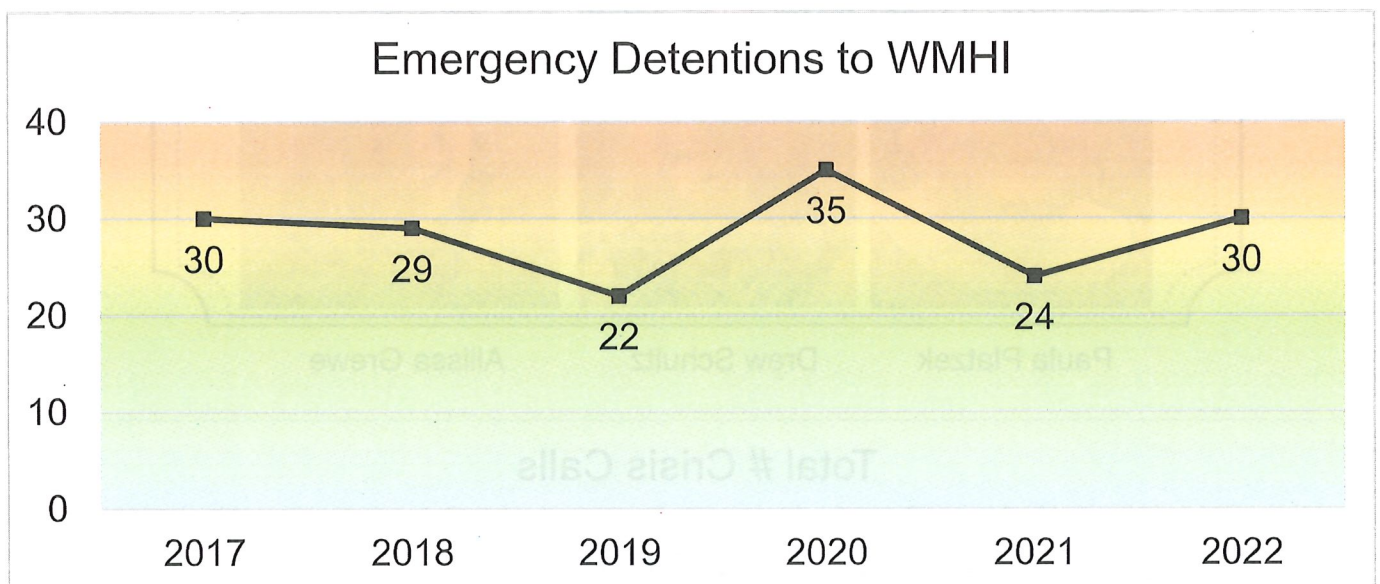
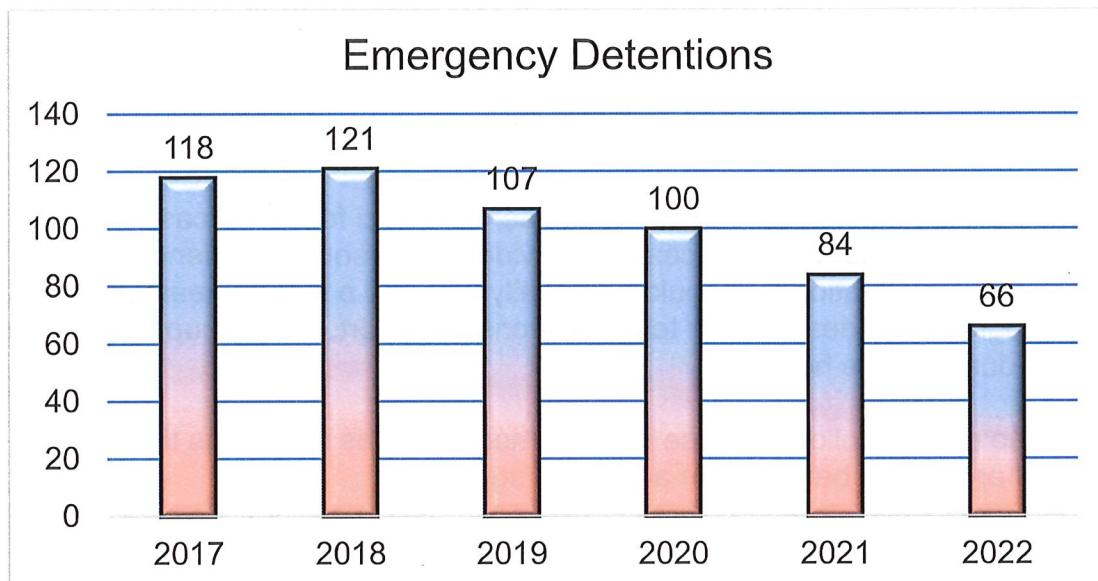
Paula Platzek

Drew Schultz

Allissa Grewe







## Co-Responder Program

In April 2022, Barron County Department of Health and Human Services initiated a Co-Responder Program. The program consists of a Mental Health Professional and a Law Enforcement Officer who respond in collaboration to community calls that comprise a mental health and/or substance use component.

### Program Goals:

- A partnership between law enforcement and mental health to enhance the strengths of both systems
- Early intervention in mental health and substance use crisis situations to decrease the severity/escalation/duration of the crisis
- Decrease arrests and utilization of jail
- Avoid unnecessary psychiatric hospitalizations
- Early identification of necessary emergency detentions
- Increase the turnaround time of psychiatric hospital placements
- Return law enforcement to other duties
- Enhanced patient/consumer care by assisting in navigation of crisis system supporting stabilization
- Provide additional follow up and linkage services to individuals who are often reluctant to engage in services after the crisis has passed

### Types of calls:

- Mental health crisis calls
- High system utilizers known to LE and/or the MHP
- Well-person checks
- Apparent substance use intoxication and/or incapacitation to include misuse and dependency
- Calls believed by LE to have behavioral health components or complex crisis factors
- In 2022, the mental health professional responded to 24 crisis calls
- The most common request was for someone experiencing suicidal ideation
- During the first quarter of 2023, the co-responder has been requested on 17 calls, so as the program is developing, calls are increasing



AJ Kammeyer



## Barron Area Recovery Center (BARC) DHS 75

The Barron Area Recovery Center (BARC) is a state certified program that provides outpatient substance abuse services to Barron County residents. Barron County added gender-specific IOP and Aftercare services in October 2018. Barron County is one of a small group of counties to offer this programming.



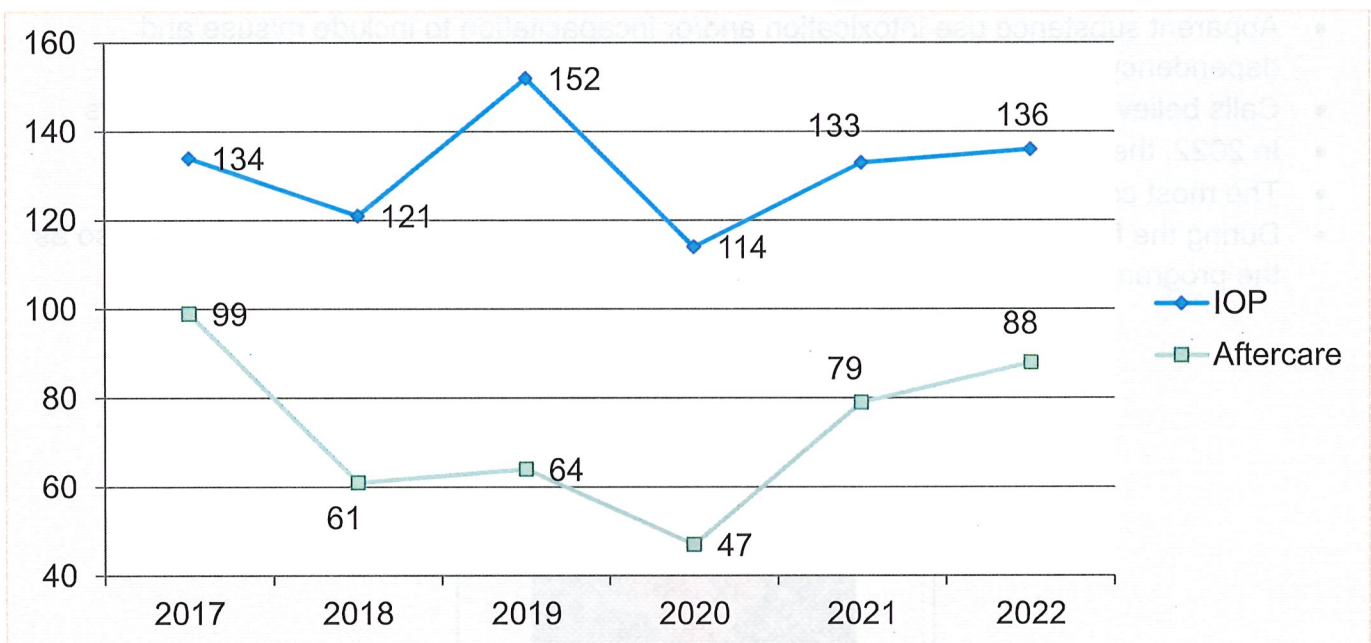
Ron Lessard



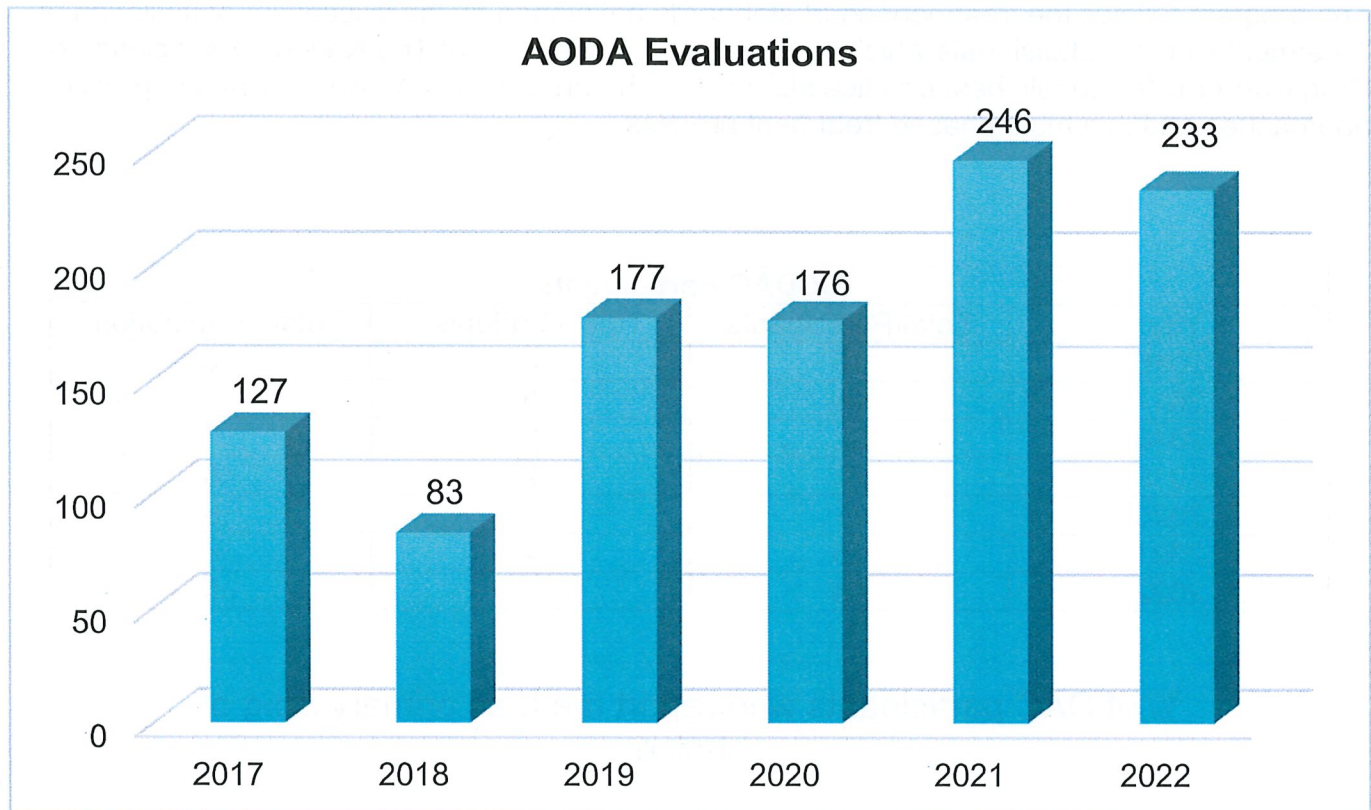
Amelia Collins



Dan McNamara



	Gender Specific Enrollment					
	2020		2021		2022	
	Female	Male	Female	Male	Female	Male
IOP	49	65	55	78	49	87
Aftercare	25	22	30	49	28	60





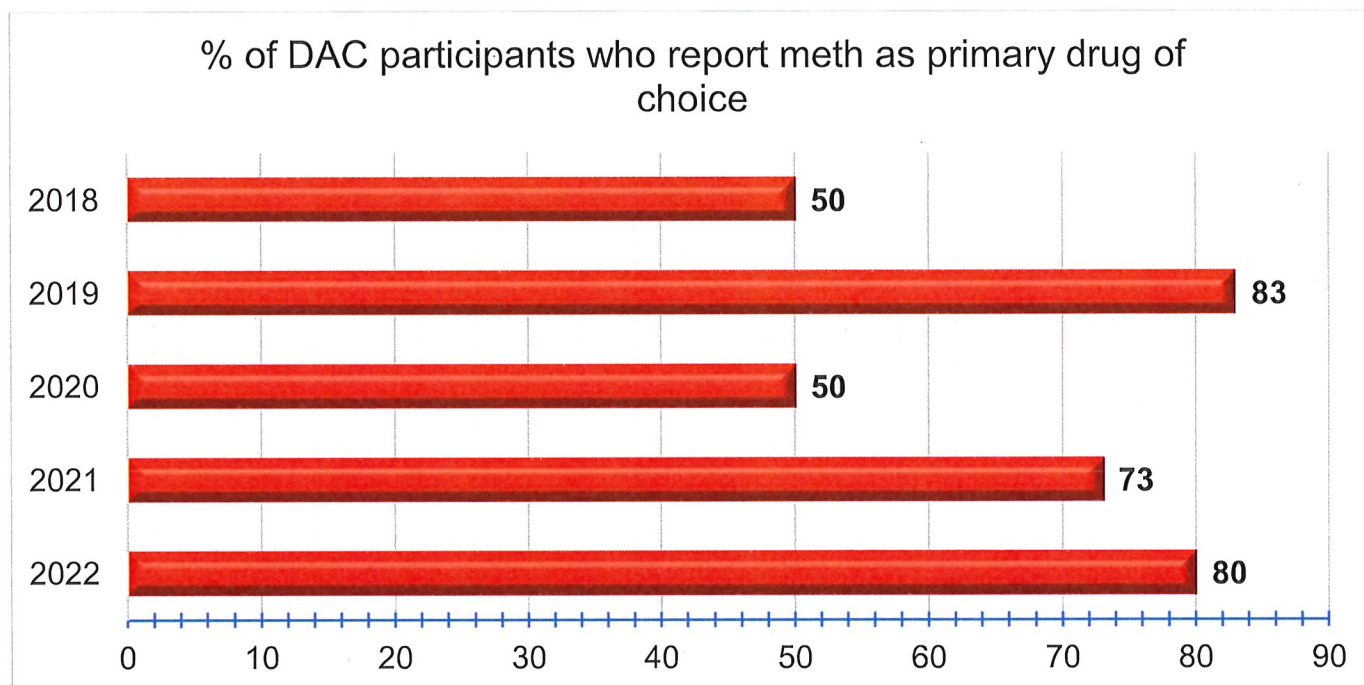
## Drug and Alcohol Court (DAC)

The Barron County Drug and Alcohol Court is specifically designated and staffed to handle cases involving drug offenders through an intensive, judicially monitored program of drug treatment, rehabilitative services, and strict community supervision.

The program consists of a multi-disciplinary team which includes a judge, a law enforcement representative, a public defender, a district attorney representative, a substance abuse counselor, a BCDAC coordinator/case manager, a Department of Corrections officer, and a Department of Health and Human Services social worker.

The program follows the treatment court standards developed by the Wisconsin Association of Treatment Court Professionals which incorporated components of The National Association of Drug Court Professionals best practice standards. The program uses evidence-based practice approaches and is a multi-phased treatment process.

BCDAC Participants			
Year	Total Participants	Total Graduates	Total Terminations
2016	15	5	6
2017	16	5	8
2018	22	6	7
2019	21	2	6
2020	21	7	6
2021	15	4	6
2022	15	2	5



Expected outcomes of graduation from the BCDAC program are abstinence from substance use, increased employment, decreased recidivism rates, increased housing stability, decreased criminal justice involvement, and improved family functioning and social connectedness.

## Community Support Program (CSP) (DHS 63)

Barron County's CSP is a state-certified, individualized, treatment program for persons living with severe and persistent mental illness. The CSP team includes a psychiatrist, a psychiatric nurse practitioner, a registered nurse, a licensed practical nurse, and three clinicians.



Amelia Collins

Lara Stauner

Erik Ethun

Jena Florczak  
Kelsey Husby

CSP Participants	
2017	51
2018	47
2019	43
2020	40
2021	37
2022	37

Participants by Gender	
Male	25
Female	12



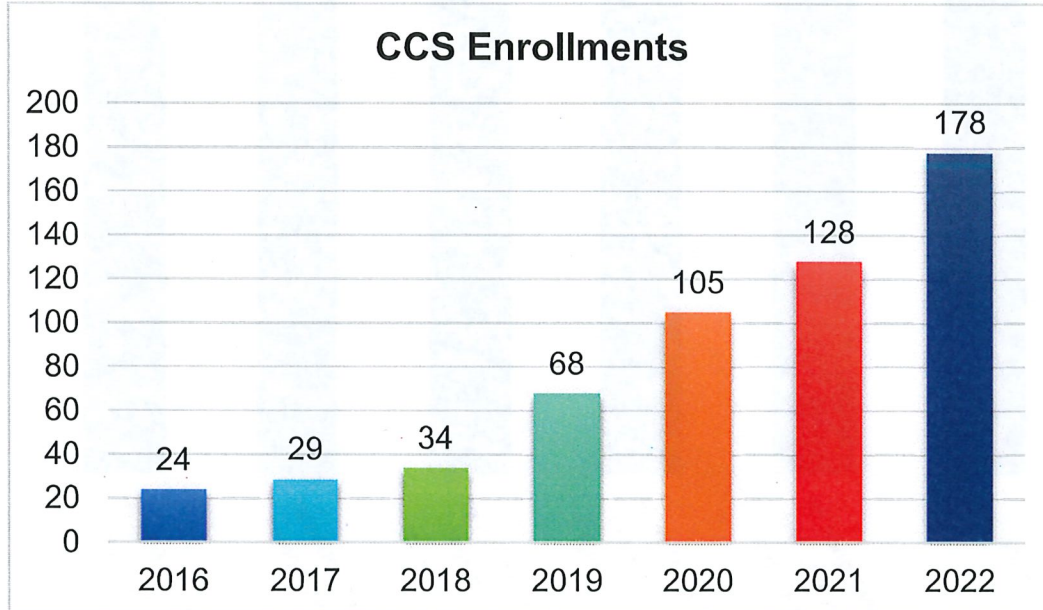
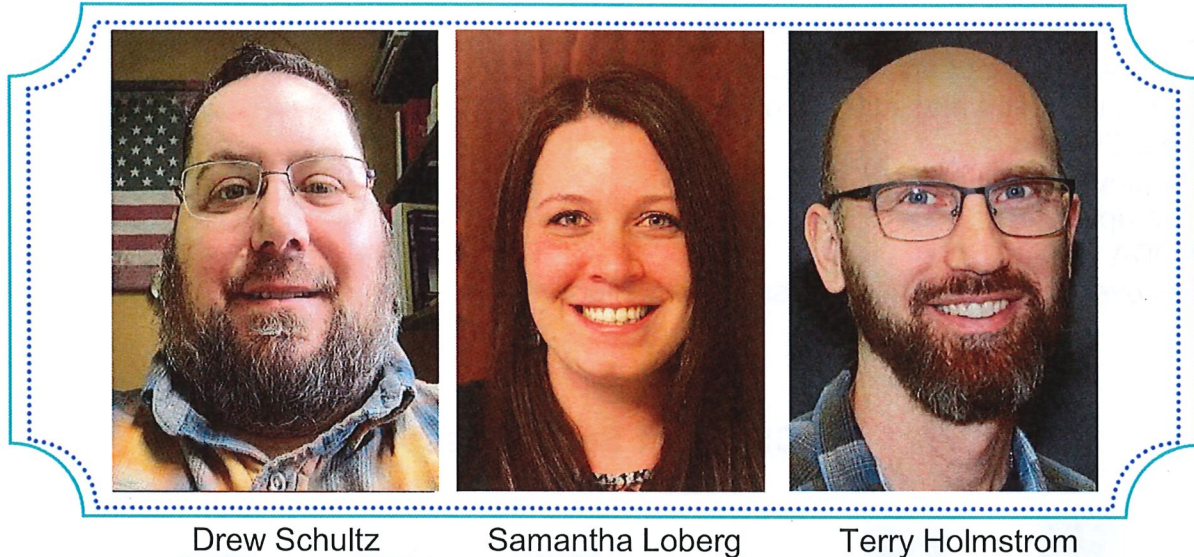
Medication Management Services	
2018	37
2019	36
2020	31
2021	29
2022	27

	CSP Admits	Successful Discharges
2017	9	9
2018	8	9
2019	4	3
2020	5	2
2021	6	7
2022	2	4

The Community Support Program is designed to support people by providing resources and enhancing skills enabling participants to build an independent life and live in the least restrictive setting possible.

## Comprehensive Community Services (CCS) (DHS 36)

Barron County participates in a shared services model with Eau Claire and St. Croix Counties. We are part of the BESt CCS Program. From 2016-2018, Barron County was part of the WRRWC CCS Consortium.



Adult Enrollments	
2019	30
2020	48
2021	63
2022	72

CCS is available to consumers with mental health or substance use issues across the lifespan. Flexible and individualized services are available to Barron County residents which facilitate psychosocial rehabilitation and recovery. The program provides for individuals with more needs than traditional outpatient services, but lower intensity than Community Support Programs.



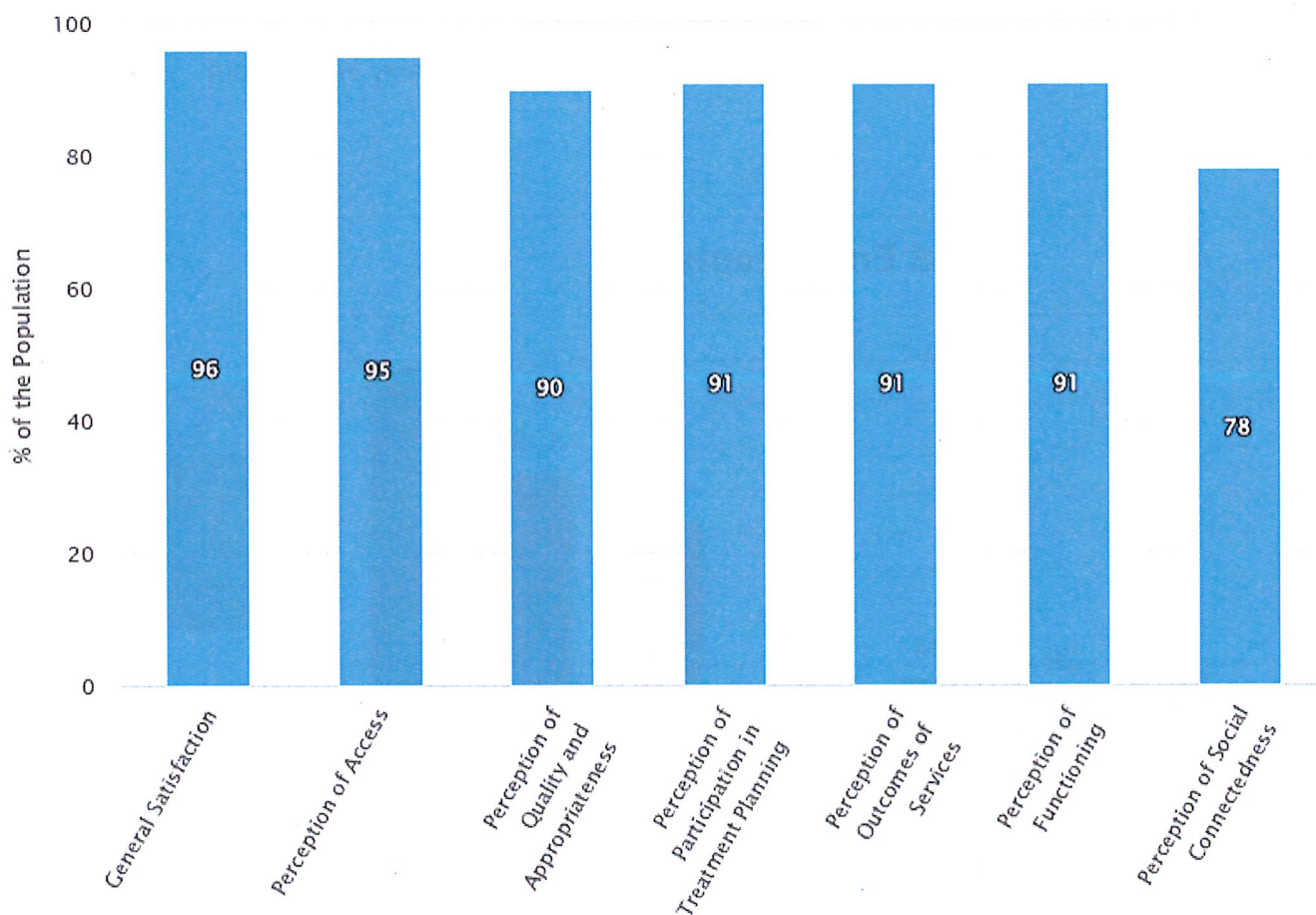
### CCS Recovery Concepts

- Active Consumer participation in recovery plan
- Consumer control of rights, goals, and decisions
- Manage mental health and substance use symptoms
- Successful independent community living

### CCS Program Services

- Case management and service facilitation
- Skill development and enhancement
- Communication and interpersonal skills training
- Peer Support
- Employment training
- Therapy
- AODA services
- Recovery education and illness management

### CCS Client Survey Results



Question	Response Options	CCS
Are you currently receiving mental health and/or substance use services?	1=Mental health only	70%
	2=Substance use only	3%
	3=Mental health and substance use	15%
	4=Unknown	9%
How long have you received these services?	1=Less than 6 months	0%
	2=6 months to 1 year	21%
	3=1 year to 2 years	33%
	4=More than 2 years	36%
	5=Unknown	6%
What is your gender?	1=Female	55%
	2=Male	39%
	3=Trans Female	0%
	4=Trans Male	0%
	5=Unknown	0%
	6=Other	0%
What is your age? (in years)	0-5	0%
	6-9	3%
	10-13	6%
	14-17	12%
	18-25	15%
	26-40	21%
	41-65	30%
	Over 65	6%
	Unknown	0%
What is your racial background? (Please select all that apply) *	1=American Indian/Alaska Native	0%
	2=Asian	0%
	3=Black/African American	0%
	4=Native Hawaiian/Pacific Islander	3%
	5=White/Caucasian	97%
	6=Unknown	0%
	7=Other	0%
Are you of Mexican, Hispanic or Latino origin?	1=Yes	0%
	2=No	91%
	3=Unknown	3%

*\*If a respondent selected more than one category, they were included in each category. Therefore, the percentages may total more than 100%.*



## **Economic Support/Income Maintenance**

Economic Support/Income Maintenance provides financial assistance to low-income individuals so that they can move toward self-sufficiency. These programs include: FoodShare, Medicaid, and Childcare Assistance.

### **Economic Support Program**

#### **Manager**

*Bonnie Roemhild*

### **Lead Economic Support Workers**

*Candi Gillett*

*Dayna Stellrecht*

### **Economic Support Workers**

*Ashley Solfest*

*Brian Webb*

*Cheryl Bussewitz*

*Heather Salquist*

*Kayla Gander*

*Kristi Blodgett*

*Mee Vang*

*Sandy Nielsen*

*Scott Venegas*

*Tammy Anderson*

*Taylor Bever*

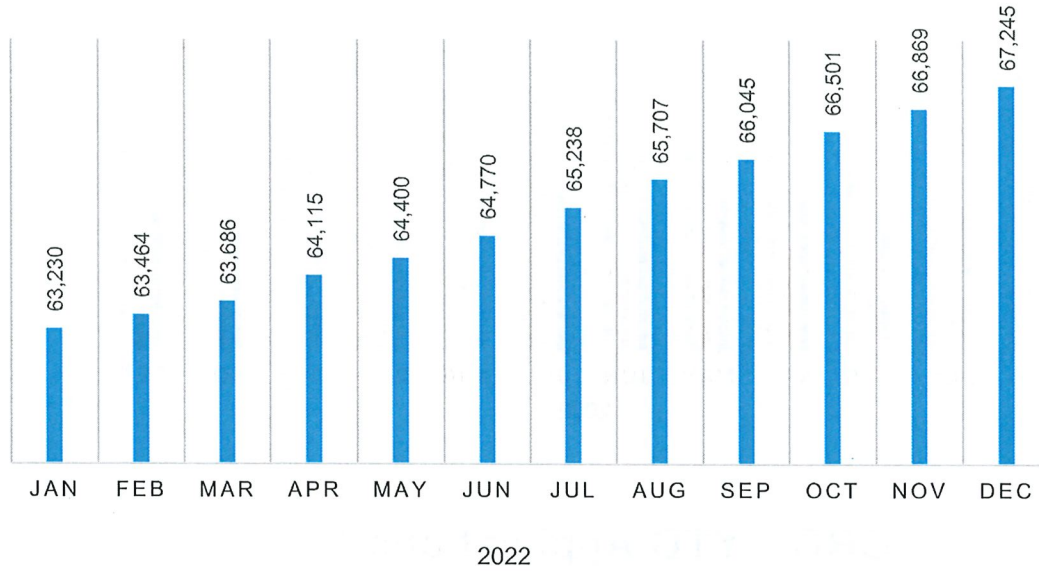
### **Reception**

*Lisa Long*

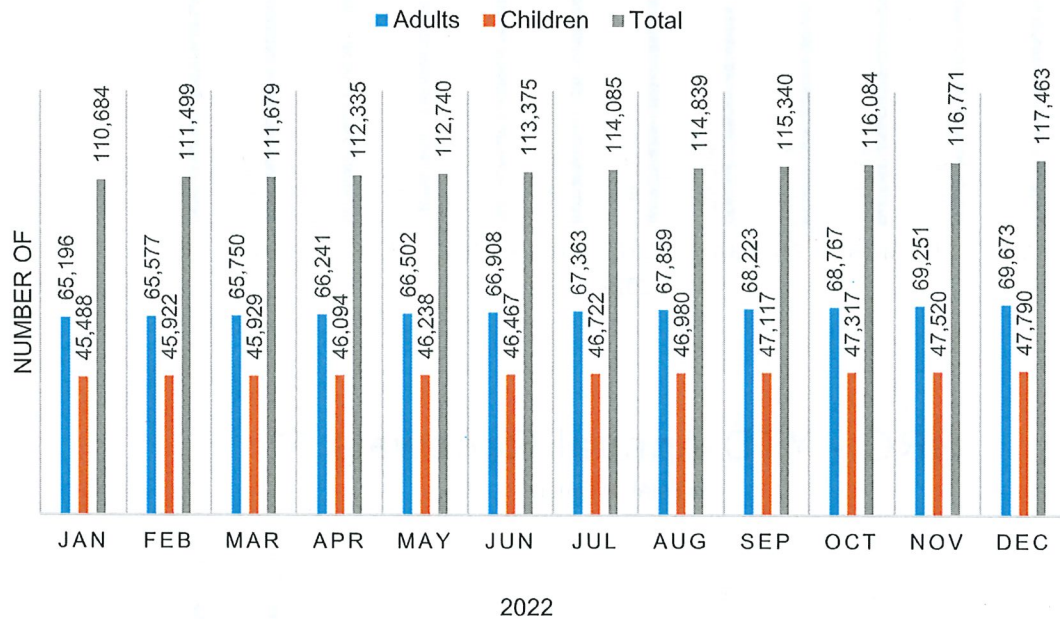
## **FoodShare/Medicaid**

Income Maintenance Recipients are considered those who received FoodShare and/or Medicaid benefits. FoodShare Wisconsin helps low-income families and individuals buy nutritious food. Medicaid is the largest source of funding for medical and health-related services for people with low income in the United States. Medicaid includes BadgerCare, Family Planning Only Services, Elderly and Disabled MA, Long-Term Care MA, Community Waivers (Family Care & IRIS), and Medicare Premium Assistance. Medicaid eligibility is based on income and for some programs, assets.

## Great Rivers Consortium - Income Maintenance Cases

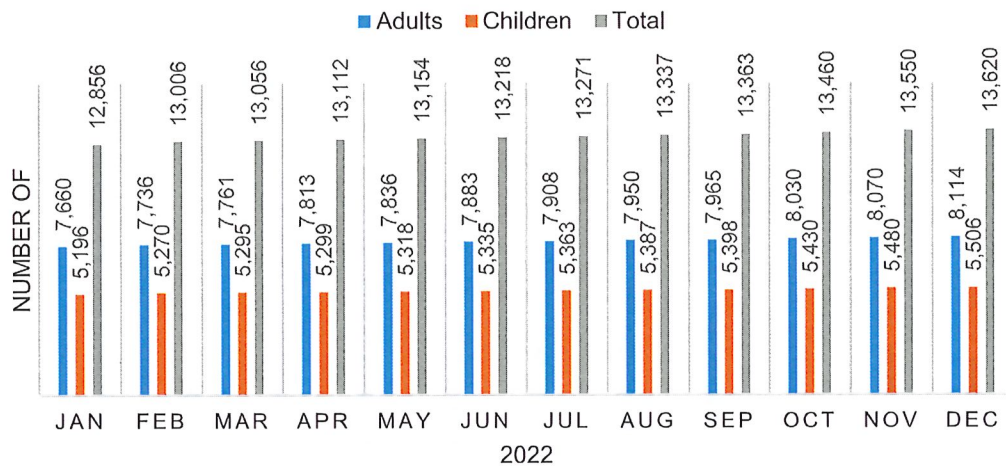


## Great Rivers Consortium - Income Maintenance Recipients

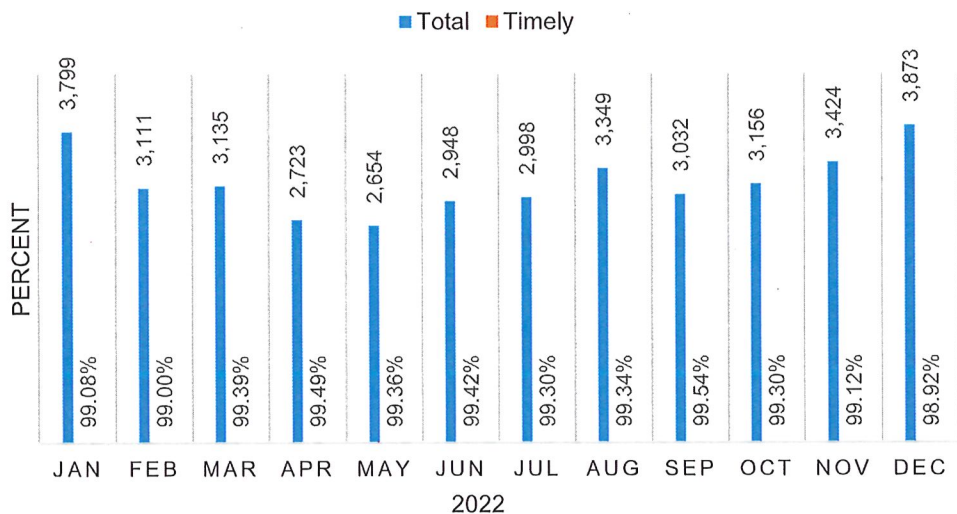




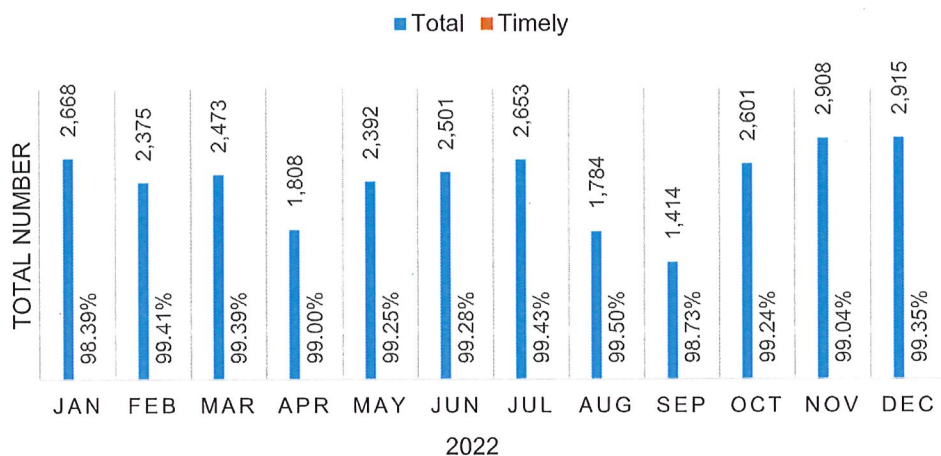
## Barron County - Income Maintenance Recipients



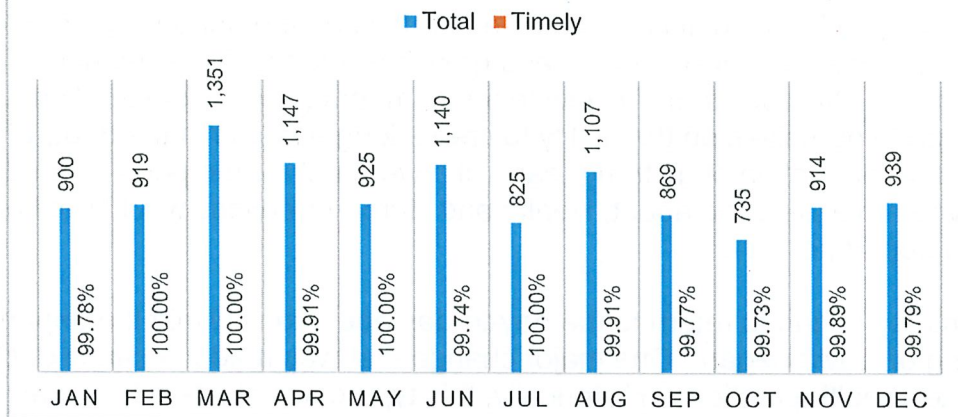
## GRC - YTD Applications \*\*



## GRC - YTD Annual Renewals \*\*



## GRC - YTD 6 Month Report Forms



## Child Care Assistance

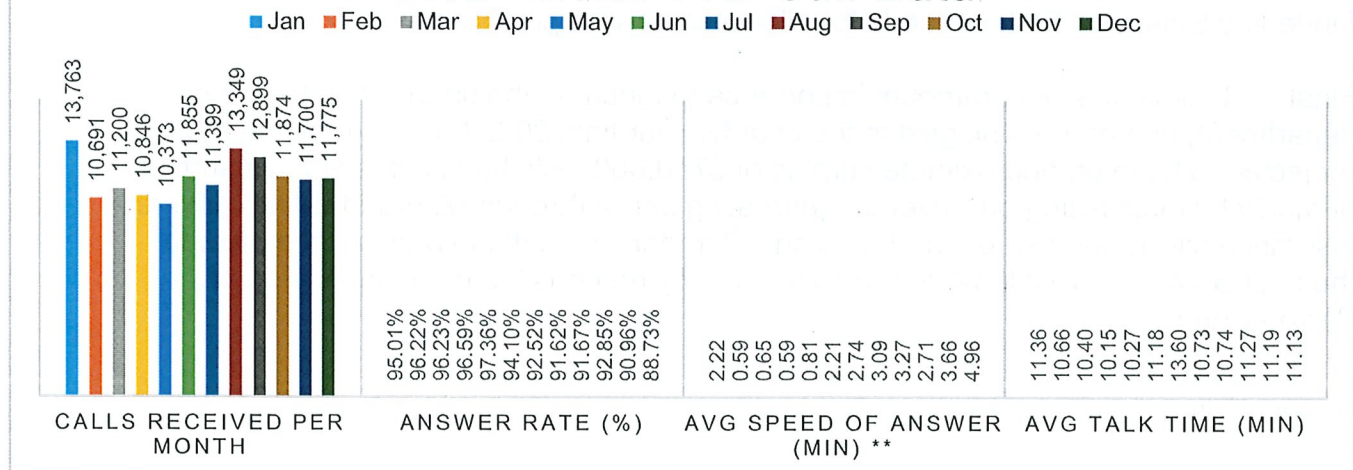
The Child Care Assistance Program helps low-income families pay for child care while working or attending school or training. Each parent in the household needs to be in an approved activity in order to qualify for Child Care Assistance.

2022 CHILDCARE NUMBERS	
Total Families Served	106
Total Children	174
Total Issuance	\$469,980.43
Average Paid Per Month	\$39,165.04

## Call Center

The Great Rivers Call Center continues to be an important part of the Economic Support/Income Maintenance operations. Economic Support workers from the ten counties that make up the Great Rivers Consortium: Barron, Burnett, Chippewa, Douglas, Dunn, Eau Claire, Pierce, Polk, St. Croix and Washburn, spend half of their workday assisting our consumers who are calling the call center.

## GRC - 2022 YTD Call Data



\*\*denotes contractual requirement - in this instance monthly speed of answer cannot exceed 10 minutes



## Message from the Director

As we are underway with spring, it is a nice time to reflect on the happenings of the previous year. 2022 was a year of change and growth within the Department of Health and Human Services. We welcomed 7 new team members (5 replacements/2 new positions). We pride ourselves on the ability to create longevity within the department, as that really is the foundation of a strong team. If it were not for the people that do all the hard work you have just read about, Health and Human Services would not be the well-functioning department it is.

A sense of normality began to return to the day-to-day operations within the department as the unwinding of Covid began. One major change that was made because of Covid was the use of telehealth practices. Historically, this type of client interaction was not allowed or billable in many service areas. Telehealth is now a service delivery method that can be practiced, and is billable. We still recognize that in our line of work, face-to-face contact with those we serve is very important and we will utilize both modes of service delivery depending on circumstances.

Two of our fastest growing program areas include Children's Long Term Support (CLTS) and Comprehensive Community Services (CCS). The CLTS Program helps children with disabilities and their families through supports and services that help children grow and live their best lives. It is a home and community-based service waiver. It uses a Medicaid waiver to fund services for kids with disabilities. The waiver lets states use Medicaid to fund additional non-medical services and supports not normally offered. The CLTS Program aims to keep kids at home instead of in an institution. In 2022, we saw about a 12% increase in cases with a continually growing list of referrals. This growth has been challenging to manage due to both limited staff, and a growing demand for service providers.

CCS is a recovery-oriented program that is available to consumers with mental health or substance use issues across the lifespan. CCS is for people who have needs that, if ignored, could lead to being hospitalized in times of crisis. The program works to stabilize and address mental health and substance use concerns, which include self-managing physical and social health, as well as, meeting needs such as housing, education and employment. Recovery is the primary goal of the program. From 2021 to 2022, we had program participation for all ages increase by 39%. This program is fully funded by State and Federal funds for allowable service provision.

Finally, I believe it is of paramount importance to touch on the financial state of the department, one of the 3 biggest in the county. Our final 2022 budget (unaudited) is projected to have an approximate surplus of \$740,000. We have achieved this surplus primarily by maximizing our revenue generating ability through Medicaid billing, private insurance billing and use of grant funding. Our team is continually striving to provide the best services possible while remaining fiscally responsible to the taxpayers of Barron County.

Respectfully,

*Stacey Frolik*

**BARRON COUNTY**

**DEPARTMENT OF ADMINISTRATION**

**FINANCE DIVISION**

Jodi Busch, Finance Director

335 East Monroe Avenue  
Courthouse Room 2510  
Barron, WI 54812  
Phone: 715-537-6859  
Fax: 715-537-6820

TO: DHHS BOARD MEMBERS

FROM: HEIDI SYVINSKI, FINANCIAL ANALYST

SUBJECT: JUNE REPORTS

DATE: 06-20-2023

Attached are three exhibits of budget and financial reports pertaining to Human Services and Child Support and are labeled as the following:

- Exhibit #1 A five year analysis comparing the YTD expenditures for PD 04 2019, 2020, 2021, 2022 & 2023
- Exhibit #2 DHHS financial statements for PD 04 2023 along with a detailed expenditure report. Prior year numbers are also included.
- Exhibit #3 The Child Support financial statements for PD 04 2023. Prior year numbers are also included.



Barron County, Barron Wisconsin  
 Summary Analysis of Dept. of Health & Human Services Financials  
 Period Ending 4/28/2023

Date 6/20/23  
 Time 10:43 AM  
 Preparer HMS

\\bcusers\users\$\heidisyvinski\My Documents\DHHS Board\06 23 DHHS Board Mtg 0423 Financials.xls\Board

**EXHIBIT #1 - 5 Year Analysis**

**Internal Management Memorandum**

**Unaudited Draft for Discussion Purposes Only**

	January-April YTD Expenditures <u>2019</u>		January-April YTD Expenditures <u>2020</u>		January-April YTD Expenditures <u>2021</u>		January-April YTD Expenditures <u>2022</u>		January-April YTD Expenditures <u>2023</u>		Change From Prior Year
Adult Protection	319,354	23.71%	395,084	-78.81%	328,339	-6.56%	306,809	23.23%	378,088	a	71,279
Access Services, Children & Families											
Youth Aids	2,119,829	-17.05%	1,758,503	2.79%	1,807,513	-12.47%	1,582,176	23.27%	1,950,386	b	368,210
Behavioral Health	1,218,715	22.60%	1,494,145	20.92%	1,806,686	22.78%	2,218,252	19.48%	2,650,259	c	432,007
Public Health	527,024	13.41%	597,698	37.30%	820,651	-6.11%	770,469	-1.90%	755,831		(14,638)
Economic Support	443,370	-2.82%	430,874	-0.46%	428,877	5.02%	450,413	2.46%	461,481		11,068
Agency Overhead	<u>5,828</u>	-46.71%	<u>3,106</u>	36.96%	<u>4,254</u>	-67.86%	<u>1,367</u>	-28.73%	<u>974</u>		<u>(393)</u>
Subtotal	<u>4,634,120</u>	0.98%	<u>4,679,409</u>	11.05%	<u>5,196,320</u>	2.56%	<u>5,329,486</u>	16.28%	<u>6,197,019</u>		<u>867,533</u>
Transfer to General Fund	<u>-</u>		<u>-</u>		<u>-</u>		<u>-</u>		<u>-</u>		
Total	4,634,120	0.98%	4,679,409	11.05%	5,196,320	2.56%	5,329,486	16.28%	6,197,019		

a. A 22% increase in caseload for Adult Protective Services and a 19% increase in caseload for Elder Abuse.

b. Increase in placement costs.

c. Increase in Comprehensive Community Services and Institutional costs

**Internal Management Memorandum**  
**Unaudited Draft for Discussion Purposes Only**

	Adjusted Budget	Period	<u>Y-T-D</u>	Available Budget Balance	2022 Prior Year <u>Y-T-D</u>	Difference
Revenues - All Sources	\$17,913,450	\$506,197	\$1,452,413	\$16,461,037	\$1,821,709	(\$369,296)
<b>Department/Agency - Expenditures</b>						
Adult Protection	697,660	(80,120)	378,088	319,572	306,809	71,279
Access Services, Children & Families Youth Aids	6,231,310	664,537	1,950,386	4,280,924	1,582,176	368,210
Behavioral Health	7,462,833	688,789	2,650,259	4,812,574	2,218,252	432,007
Public Health	2,080,813	178,557	755,831	1,324,982	770,469	(14,638)
Economic Support	1,440,834	115,718	461,481	979,353	450,413	11,068
Agency Overhead	0	0	974	(974)	1,367	(393)
Total	\$17,913,450	\$1,567,481	\$6,197,019	\$11,716,431	\$5,329,486	\$867,533
Less: Transfer to General Fund			\$0		\$0	
Total			\$6,197,019		\$5,329,486	
Revenues in Excess/(Deficit) of Expenditures	\$0	(\$1,061,284)	(\$4,744,606)	\$4,744,606	(\$3,507,777)	(\$1,236,829)

February	1,580,440	
March	1,677,050	
April	1,567,481	
Total St Aid Receivable		4,824,971
Revenues in Excess of Expenditures		<u>\$80,365</u>

\* Estimated revenues based on expenditures and current contract balances.  
Expenditures are reported to the state a month after the costs are incurred. We are then reimbursed for the costs three months after the costs are incurred.



Run Date 06/20/23 07:31 AM

## COUNTY OF BARRON

Page No 1

For 04/01/23 - 04/30/23

## Expenditure Summary Report

FJEXS01A

Periods 04 - 04

DHHS Accounts by CARS,SPC,Target

211

Account No/Description	Adjusted Budget	Y-T-D Encumb	Period Expended	Y-T-D Expended	Available Balance	Percent Used
<b>211 HUMAN SERVICE PROGRAMS</b>						
005001 Social Services Overhead	.00	.00	-55,822.52	-156,444.62	156,444.62	.00
005002 Agency Overhead	.00	.00	.00	.00	.00	.00
005003 Public Health Overhead	.00	.00	.00	.00	.00	.00
005006 Vehicle Allocation Account	.00	.00	.00	198.00	-198.00	.00
005180 Previous Year Expenditure	.00	.00	.00	540.00	-540.00	.00
005306 Safe & Stable Families	114,275.00	.00	6,411.59	25,399.46	88,875.54	22.23
005309 HWPP - Healthiest Wisconsin Partnership	.00	.00	4,769.64	13,483.78	-13,483.78	.00
005311 Family Treatment Court	216,000.00	.00	13,179.18	46,241.04	169,758.96	21.41
005313 APS	93,000.00	.00	17,429.63	50,526.64	42,473.36	54.33
005314 St Aid STOP ACT	50,000.00	.00	2,163.29	8,252.49	41,747.51	16.50
005323 BCA Subst Care	995,000.00	.00	66,822.54	256,015.00	738,985.00	25.73
005324 YA-AODA	7,704.00	.00	150.00	150.00	7,554.00	1.95
005325 YA Subst Care	350,000.00	.00	79,311.13	306,946.92	43,053.08	87.70
005329 TFC Administrative Costs	100,000.00	.00	571.32	16,047.43	83,952.57	16.05
005332 WISACWIS Ongoing Charges	5,902.00	.00	.00	.00	5,902.00	.00
005366 YA Community	280,000.00	.00	19,319.49	77,551.27	202,448.73	27.70
005377 Kinship Care Base Benefits	155,000.00	.00	14,676.13	53,798.47	101,201.53	34.71
005380 Kinship Care Assessments	15,762.00	.00	337.50	5,575.50	10,186.50	35.37
005395 IV-E Foster parent Pre-Serv Training	34,000.00	.00	6,591.96	10,206.59	23,793.41	30.02
005415 Foster Care Administration	1,100.00	.00	87.02	87.02	1,012.98	7.91
005420 CLTS-DD AUTISM STATE MATCH	43,000.00	.00	644.63	2,903.98	40,096.02	6.75
005422 CLTS DD OTHER STATE MATCH	321,000.00	.00	18,842.83	71,740.89	249,259.11	22.35
005423 CLTS DD Other COP Match	72,000.00	.00	114.75	1,846.13	70,153.87	2.56
005432 CLTS MH Other STATE MATCH	75,000.00	.00	12,008.36	34,625.05	40,374.95	46.17
005433 CLTS MH COP Match	66,000.00	.00	.00	.00	66,000.00	.00
005442 CLTS PD OTHER STATE MATCH	48,000.00	.00	4,421.99	17,487.21	30,512.79	36.43
005443 CLTS PD COP Match	35,000.00	.00	270.00	1,602.50	33,397.50	4.58
005516 COMMUNITY MENTAL HEALTH	100,000.00	.00	8,780.00	35,120.00	64,880.00	35.12
005540 Brighter Futures Initiative (BFI)	.00	.00	.00	3,380.20	-3,380.20	.00
005544 Methamphetamine Treatment	250,000.00	.00	22,654.38	88,822.02	161,177.98	35.53
005545 TAD Grant	26,962.00	.00	13,889.98	40,005.56	-13,043.56	148.38
005550 Birth to Three	300,000.00	.00	50,806.02	206,228.13	93,771.87	68.74
005553 CHIPS - Legal Federal	75,000.00	.00	.00	20,355.77	54,644.23	27.14
005561 Community Aids	3,258,621.00	.00	288,072.50	1,135,334.15	2,123,286.85	34.84
005565 Crisis Stabilization	15,000.00	.00	.00	2,800.00	12,200.00	18.67
005569 Mental Health Block Grant	1,962,000.00	.00	158,595.35	640,552.10	1,321,447.90	32.65
005570 AODA Block Grant	220,000.00	.00	18,448.00	77,673.64	142,326.36	35.31

Run Date 06/20/23 07:31 AM

## COUNTY OF BARRON

Page No 2

For 04/01/23 - 04/30/23

## Expenditure Summary Report

FJEXS01A

Periods 04 - 04

DHHS Accounts by CARS,SPC,Target

211

Account No/Description	Adjusted Budget	Y-T-D Encumb	Period Expended	Y-T-D Expended	Available Balance	Percent Used
<b>211 HUMAN SERVICE PROGRAMS</b>						
005573 TPR Adoption Federal	25,000.00	.00	.00	4,349.00	20,651.00	17.40
005575 CO-RESPONDER	76,887.00	.00	25,136.87	90,524.53	-13,637.53	117.74
005875 Birth to 3 Child Care	.00	.00	196.85	560.66	-560.66	.00
006076 Income Maintenance	1,338,192.00	.00	112,356.55	444,652.70	893,539.30	33.23
006377 Childrens COP	134,970.00	.00	2,963.09	18,685.58	116,284.42	13.84
006851 Child Care Program Operations	87,537.00	.00	2,886.99	13,070.15	74,466.85	14.93
006852 Child Care Certification	15,105.00	.00	277.64	3,197.26	11,907.74	21.17
008005 CSP Prgram	850,000.00	.00	78,212.26	275,143.14	574,856.86	32.37
008010 Billing Contra Account	.00	.00	.00	236.25	-236.25	.00
008020 Elder Abuse Grant	160,000.00	.00	9,146.63	87,482.86	72,517.14	54.68
008026 Community Intervention	6,983.00	.00	.00	.00	6,983.00	.00
008035 Comprehensive Community Services CCS	3,951,984.00	.00	363,071.77	1,399,229.60	2,552,754.40	35.41
053612 In Home Safety Services (IHSS)	114,608.00	.00	57,984.66	166,236.65	-51,628.65	145.05
053940 PDS Partnership Training	2,045.00	.00	.00	.00	2,045.00	.00
054720 Farmer's Market Private	6,000.00	.00	.00	31.77	5,968.23	.53
090000 W-2 ES WHEAP DCADM Overhead	.00	.00	.00	.00	.00	.00
535000 Bto3 ARPA	.00	.00	1,554.37	3,428.09	-3,428.09	.00
581007 Coordinated Services Team (CST)	134,000.00	.00	20,882.85	70,731.60	63,268.40	52.78
735100 Lead In Water Testing Grant	.00	.00	428.24	7,428.15	-7,428.15	.00
746602 Thrive Barron County	.00	.00	.00	414.53	-414.53	.00
750000 Public Health	99,163.00	.00	4,662.15	30,983.84	68,179.16	31.25
750400 Environmental Health	15,000.00	.00	1,054.82	8,495.53	6,504.47	56.64
750401 Sanitarian Cost Pool	.00	.00	.00	.00	.00	.00
750425 EH Sanitarian DATCAP Recreational	270,000.00	.00	20,174.02	86,855.87	183,144.13	32.17
750427 DSPS Body Art	1,100.00	.00	337.93	839.00	261.00	76.27
750428 DNR Wells	23,000.00	.00	2,560.29	4,498.11	18,501.89	19.56
750500 Tuberculosis	70,000.00	.00	4,899.90	21,211.54	48,788.46	30.30
750600 Communicable Diseases	150,000.00	.00	7,994.63	36,030.17	113,969.83	24.02
751000 PH Drug Screening Initiative UA	.00	.00	1,278.28	5,020.02	-5,020.02	.00
754661 SNAP Nutr Ed Grant	10,712.00	.00	775.79	6,507.90	4,204.10	60.75
754710 WIC	350,000.00	.00	17,736.51	71,781.49	278,218.51	20.51
754720 WIC-Farmers Market	2,150.00	.00	70.06	70.06	2,079.94	3.26
754746 WIC Outreach	4,211.00	.00	.00	.00	4,211.00	.00
754760 WIC Breastfeeding	11,504.00	.00	538.96	2,670.01	8,833.99	23.21
755015 Bio-Terrorism	36,716.00	.00	2,986.80	10,525.68	26,190.32	28.67
755020 Immunization (CC)	56,000.00	.00	2,778.27	19,548.18	36,451.82	34.91
755800 VACCINE COMMUNITY OUTREACH	.00	.00	.00	8,964.33	-8,964.33	.00



Run Date 06/20/23 07:31 AM

COUNTY OF BARRON

Page No 3

For 04/01/23 - 04/30/23

Expenditure Summary Report

FJEXS01A

Periods 04 - 04

DHHS Accounts by CARS,SPC,Target

211

<u>Account No/Description</u>	<u>Adjusted Budget</u>	<u>Y-T-D Encumb</u>	<u>Period Expended</u>	<u>Y-T-D Expended</u>	<u>Available Balance</u>	<u>Percent Used</u>
211 HUMAN SERVICE PROGRAMS						
755811 ARPA COVID RECOVERY FUND	335,500.00	.00	2,894.80	29,112.22	306,387.78	8.68
755812 PH WORKFORCE	31,400.00	.00	1,051.00	4,739.22	26,660.78	15.09
757600 Prenatal Care	30,000.00	.00	10,244.62	29,383.85	616.15	97.95
757720 Childhood Lead (CC)	6,590.00	.00	969.74	3,325.64	3,264.36	50.46
758117 Tobacco Prevention and Control	.00	.00	116.37	1,949.97	-1,949.97	.00
759220 Preventive Health (CC)	6,682.00	.00	449.07	3,114.31	3,567.69	46.61
759320 Maternal Child Health (CC)	40,000.00	.00	4,150.48	13,505.37	26,494.63	33.76
759321 Reproductive Health	140,000.00	.00	28,982.07	102,311.79	37,688.21	73.08
759322 Title X Telehealth	14,721.00	.00	737.00	4,013.48	10,707.52	27.26
759323 Qualitative Data Grant	17,500.00	.00	866.37	3,315.39	14,184.61	18.95
759371 Title X Telehealth	.00	.00	525.93	7,191.70	-7,191.70	.00
759400 Refugee Health Services	2,864.00	.00	.00	599.52	2,264.48	20.93
211 HUMAN SERVICE PROGRAMS	17,913,450.00	.00	1,567,481.32	6,197,019.03	11,716,430.97	34.59

Barron County, Barron Wisconsin  
Summary Child Support Financial Statements  
Period Ending:

4-28-2023 PD04 Year 2023

Date  
Time  
Preparer

06/20/23  
10:43 AM  
HMS

**CHILD SUPPORT**  
**EXHIBIT #3 PD 04 2023 FINANCIALS**

**Internal Management Memorandum**  
**Unaudited Draft for Discussion Purposes Only**

	Adjusted Budget	Period	<u>Y-T-D</u>	Available Budget Balance	Prior Year <u>Y-T-D</u>	Difference
Revenues - All Sources	\$916,322	\$177,659	\$187,147	\$729,175	\$189,423	(\$2,276)
<b>Agency - Expenditures</b>						
CS NIVD ACTIVITIES	810	14	36	774	197	(161)
CS NONREIMBURSED	1,214	91	344	870	355	(11)
CS SHARED	61,889	5,016	21,294	40,595	33,787	(12,493)
CS MIXED	295,925	24,285	91,476	204,449	27,306	64,169
CS REIMBURSEMENT	448,896	33,273	140,591	308,305	176,590	(36,000)
BLOOD TEST EXPENDITURES	2,500	0	360	2,140	24	336
INDIRECT COSTS	87,088	7,257	29,028	58,060	39,140	(10,112)
COUNTY COOPERATIVE AGREEMENTS	18,000	0	0	18,000	5,750	(5,750)
TRANSFER TO GENERAL FUND	0	0	0	0	0	0
Gross Expenditures	\$916,322	\$69,936	\$283,129	\$633,193	\$283,150	(\$21)
LESS TRANSFER TO GENERAL FUND	\$0	\$0	\$0	\$0	\$0	\$0
Net Expenditures	\$916,322	\$69,936	\$283,129	\$633,193	\$283,150	(\$21)
Revenues in Excess/(Deficit) of Expenditures	\$0	\$107,723	(\$95,982)	\$95,982	(\$93,727)	(\$2,254)
Accounts Recievable			130,688			
Revenues in Excess of Expenditures			34,706			



Run Date 06/20/23 07:42 AM

## COUNTY OF BARRON

Page No 1

For 04/01/23 - 04/30/23

## Expenditure Summary Report

FJEXS01A

Periods 04 - 04

EXP-S 213

02

Account No/Description	Adjusted Budget	Y-T-D Encumb	Period Expended	Y-T-D Expended	Available Balance	Percent Used
213 CHILD SUPPORT COLLECTION AGENCY						
51330 CHILD SUPPORT EXPENDITURES						
301 CS NIVD ACTIVITIES (70505)						
301 CS NIVD ACTIVITIES (70505)	810.00	.00	14.00	36.01	773.99	4.45
304 CHILD SUPPORT NONREIMBURSED						
304 CHILD SUPPORT NONREIMBURSED	1,214.00	.00	91.05	344.20	869.80	28.35
306 CHILD SUPPORT SHARED						
306 CHILD SUPPORT SHARED	61,889.00	.00	5,016.14	21,294.03	40,594.97	34.41
307 CHILD SUPPORT MIXED						
307 CHILD SUPPORT MIXED	295,925.00	.00	24,285.12	91,475.72	204,449.28	30.91
371 CS REIMBURSEMENT						
371 CS REIMBURSEMENT	448,896.00	.00	33,272.63	140,590.58	308,305.42	31.32
375 BLOOD TEST EXPENDITURES						
375 BLOOD TEST EXPENDITURES	2,500.00	.00	.00	360.00	2,140.00	14.40
381 INDIRECT COSTS						
381 INDIRECT COSTS	87,088.00	.00	7,257.00	29,028.00	58,060.00	33.33
747 COUNTY COOPERATIVE AGREEMENTS						
747 COUNTY COOPERATIVE AGREEMENTS	18,000.00	.00	.00	.00	18,000.00	.00
51330 CHILD SUPPORT EXPENDITURES	916,322.00	.00	69,935.94	283,128.54	633,193.46	30.90
213 CHILD SUPPORT COLLECTION AGENCY	916,322.00	.00	69,935.94	283,128.54	633,193.46	30.90