



PROPERTY COMMITTEE MEETING

Monday, June 5, 2023 – 1:00 p.m.
Barron County Government Center – Room 2151
335 East Monroe Avenue - Barron, WI 54812

AGENDA

1. Call Meeting To Order
2. Public Meeting Notification
3. Public Comment
4. Approve Agenda
5. Approve Minutes of May 1, 2023
6. Xcel Energy Line – City of Barron on County Property
7. Straw Pit Lease
8. Amendments to Parks & Recreation Ordinance - Boat Launch User Fees (2010-15)
9. Aging Kitchen Bid Opening & Special Meeting – Friday, June 16th at 1:00 p.m.
10. Staff Reports / Updates
 - a. Fixed Asset Listing
 - b. Dam Update
 - c. Oak Tree Planting at Justice Center in Memory of Supervisor Terry Lee
 - d. USDA Lease Extension
11. Suggestions For Future Agenda Items
12. Review Voucher Edit Lists
13. Set Next Meeting Date
14. Adjournment

PLEASE CALL 715-537-6841 IF YOU ARE UNABLE TO ATTEND

cc: B. Rogers, B. Schradle, C. Moen, J. McRoberts, D. Heller, K. Bartlett, B. Effertz, S. Olson, J. Cisek, D. Gifford, J. Wolfe, K. Beranek, J. French, J. Muench, S. Mohns, Webmaster & 3 Public Postings

Any person who has a qualifying disability under the Americans with Disabilities Act and requires the meeting or materials at the meeting to be in an accessible format must contact the County Clerk's office at 715-537-6200 at least 24 hours prior to the meeting so that arrangements may be made to accommodate your request.



PROPERTY COMMITTEE MEETING

Monday, May 1, 2023 – 1:00 p.m.

Barron County Government Center – Room 2151
335 East Monroe Avenue - Barron, WI 54812

Minutes

Members Present: Dana Heller, Bill Effertz, Karolyn Bartlett, Bob Rogers, Jerry McRoberts, Bill Schradle

Others Present: Jeff French, Louie Okey, Wendy Coleman, John Cisek, Steve Olson, Chris Fitzgerald, Jodi Busch, Abby Fischer, John Muench, Tyler Gruetzmacher, Ruth Erickson, Joan Bader

The Property Committee was called to order by Chair Heller at 1:00 p.m. on Monday, May 1, 2023.

The public meeting notification was provided by French confirming compliance with open meeting requirements.

Public Comment: Joan Bader spoke regarding the Arland Rifle Range and continued concerns of hours of operation, noise, gates not closing and fines. Staff responded that parts are ordered for the gates and Dispatch is monitoring the cameras at the range.

Motion: (Rogers / McRoberts) to approve the agenda as presented. Carried

Motion: (Bartlett / Effertz) to approve the minutes of April 3, 2023. Carried

Resolution – Authorizing Barron County Maintenance Director to Proceed with Contractor Bids for New Aging / ADRC Kitchen Located at the Barron County Government Center: Olson gave an update on the design phase of the project. Bid documents should be completed next week and would be ready to move forward with bidding the project upon approval. Discussion. **Motion:** (Bartlett / Schradle) to recommend approval of the resolution. Carried

UWECBC Campus HVAC Water Line System: Olson is looking for engineers to provide an estimate to complete a study on how to proceed with the repairs to the water line system. Once study is completed, could move forward with bidding the project. Abby Fischer spoke regarding the Campus and commitment to remain in Barron County for the foreseeable future. French is suggesting to do the entire hot and cold waterline system at one time.

Wage Increase for Part-time Casual Employees (Parks): French provided an update that there is a request going to the Executive Committee to raise the rate for the Parks Caretakers to \$10 - \$12/hour.

Staff Reports / Updates

- **Dam Update:** Gruetzmacher gave an update on the dams and the highwater this spring. Dam projects including Rice Lake gear upgrades, concrete spawl repairs and concrete pad from steam engine has been removed; Mikana dam inspection will be completed and Cumberland dam solar panel replacement. Barron County signs with the Woodland Owners donations will be installed soon.
- **Wild Rivers Trail Signage:** French has requested additional funding from the Governor's Office for possible funding for trail head signage.

Property Committee Meeting
Monday, May 1, 2023 – 1:00 p.m.
Agenda – Page 2

- Track Loader – Usage Reporting: French reviewed tracking information for the use of the track loader.
- Solar Project at UWECBC Campus: Solar project will not be moving forward.
- 2023 County Forest Administrator Grant: Cisek gave an update on the DNR forestry grant and the labor estimates which resulted an overpayment of the grant. No grant will be received in 2023 and possibly until 2025 to make up the difference.
- Food Trucks – Government Center / Justice Center: Food trucks will be onsite again this year.

Suggestions For Future Agenda Items: Xcel Energy Additional Line in the City of Barron, Aging Kitchen Bids, Pipestone Quarry / State Archaeologist Visit, Straw Pit Lease

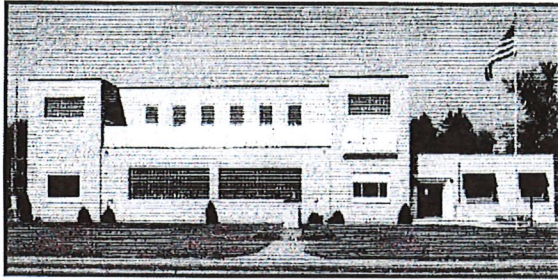
There were no questions or concerns on the voucher edit lists.

Set Next Meeting Date: June 5, 2023 at 1:00 p.m.

The Property Committee adjourned by unanimous consent at 1:34 p.m.

Minutes submitted by:
Wendy Coleman, Executive Assistant

Minutes are not official until approved by the Property Committee at their next meeting.



1303 EAST DIVISION AVENUE

LIGHT & WATER DEPARTMENT

CITY OF BARRON, WI 54812

Barron Light & Water
1303 E Division Ave
Barron, WI 54812

Telephone: (715) 537-3855

May 2023

Administrator French,

At the April 27th meeting with Xcel representatives, you asked for a letter from the Barron Light & Water Utility supporting Xcel's proposed project of looping the transmission line into the City of Barron.

Barron Light & Water Utility fully supports having our incoming transmission line looped. We are currently fed by a radial transmission line that is between 60-70 years old and in need of being rebuilt. We have been fortunate that recent storms didn't affect the radial line that feeds the City. We would be out of power in the City until Xcel repaired the incoming transmission line. Looped transmission will give the City of Barron much needed redundancy which we currently do not have.

Kindest Regards,

Jeremy Boe

Utility Manager

Barron Light & Water Utility



Jeff French <jeff.french@co.barron.wi.us>

Xcel Energy Transmission Discussion 4/27/23

1 message

Dienger, Mitchell A <Mitchell.A.Dienger@xcelenergy.com>

Fri, Apr 28, 2023 at 9:20 AM

To: "Loverude, Larry D" <larry.d.loverude@xcelenergy.com>, "Armstrong, JD" <James.D.Armstrong@xcelenergy.com>, "McFarlane, Matthew J" <Matthew.J.McFarlane@xcelenergy.com>, "jeremyboews@yahoo.com" <jeremyboews@yahoo.com>, Mark Servi <mark.servi@co.barron.wi.us>, "jeff.french@co.barron.wi.us" <jeff.french@co.barron.wi.us>

Good morning,

Thank you all for your time yesterday. Attached and below are a few notes/next steps as we progress forward. If you have any questions, feel free to reach out.

- Current construction start planned for fall/winter of 2024
 - Expected duration of 3-5 months
- Design still in the works. Attached layout will be refined as we move forward and obtain more information
- Jeremy to provide the City with a letter of intent to aid in moving this through City approval
 - Expected decision in the beginning of June

Mitch Dienger, PMP

Project Manager

(612)321-3109

(608)386-2233 cell

POWER Engineers, Inc.

www.powereng.com

2 attachments



Typical 69 kV Design.png
528K



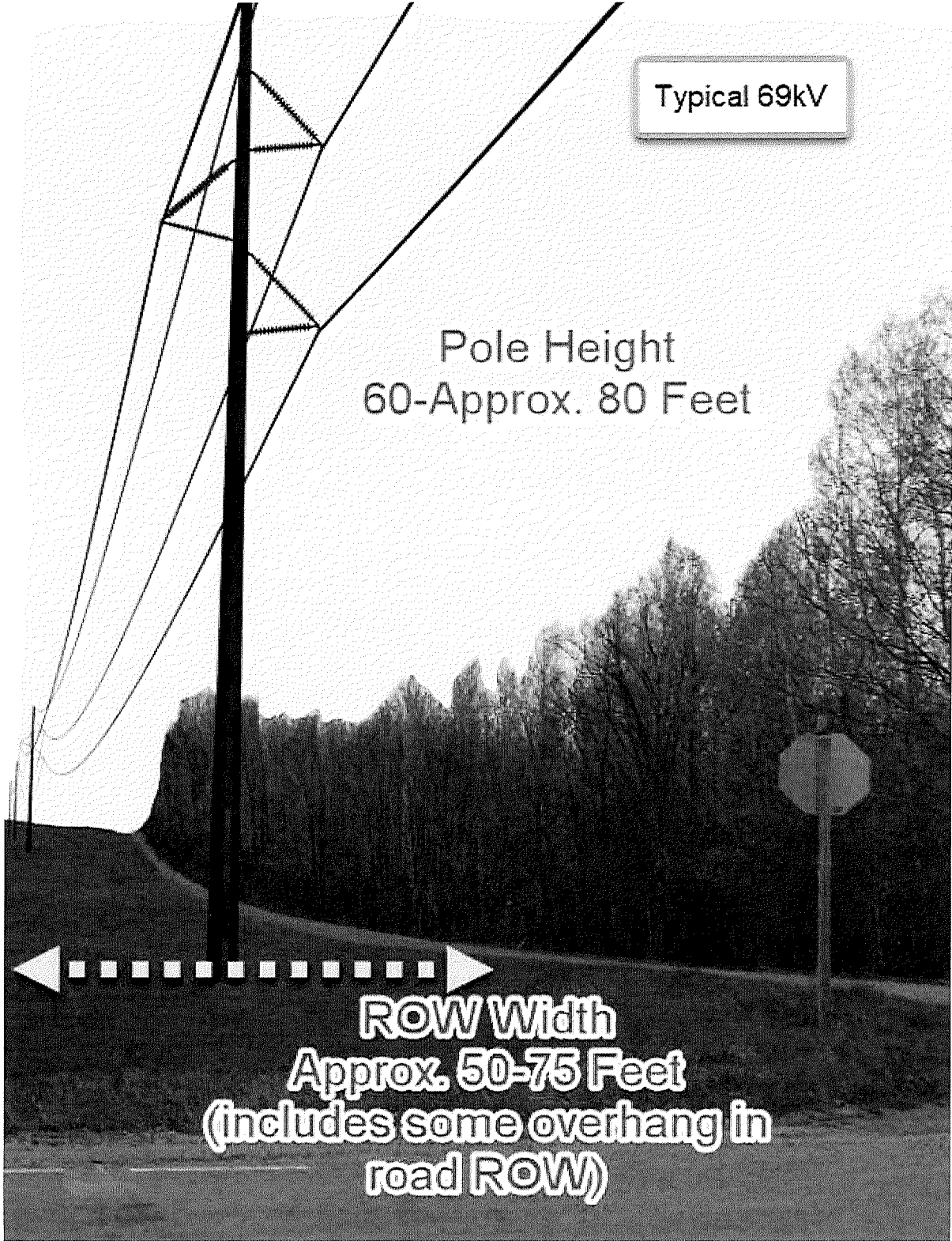
Xcel Energy W3502 Preliminary Structures.pdf
722K

Typical 69kV

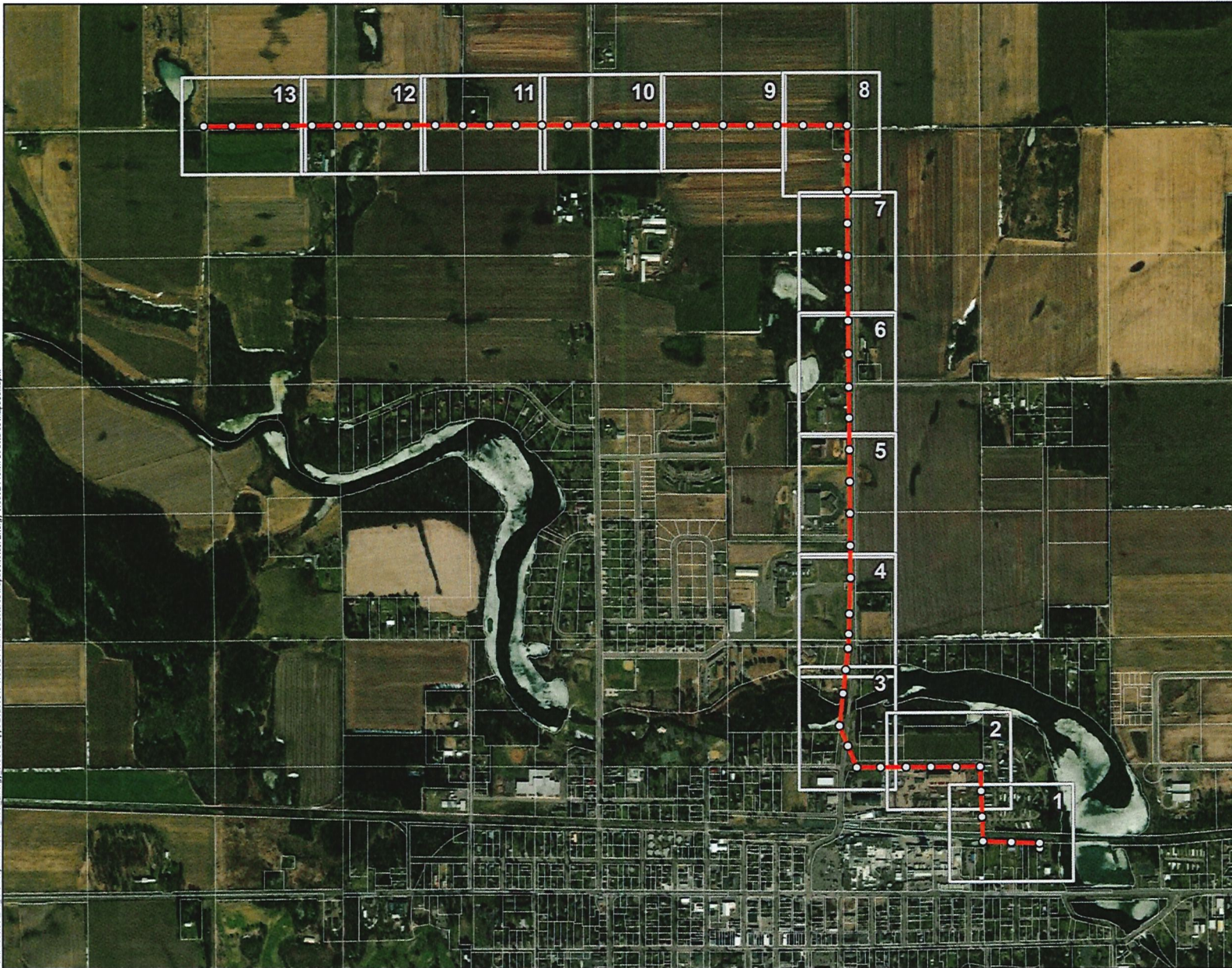
Pole Height
60-Approx. 80 Feet



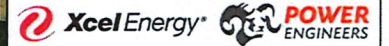
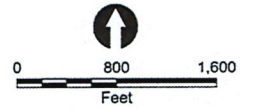
ROW Width
Approx. 50-75 Feet
(includes some overhang in road ROW)



Path: \\sdc6411\Envr_GIS\Project\1176003_Xcel_Energy_W3502\apps\3232317_W3502 Prelim Structures Mapbook\Xcel_Energy_W3502 Prelim Structures Mapbook.aprx



W3502 BON RCM LOOP TO W3503 Preliminary Structure Locations Index



Project Components

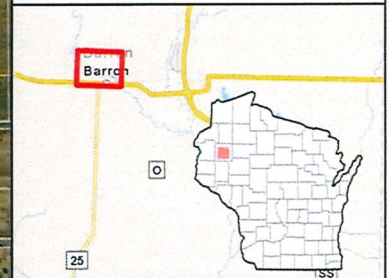
- Project Centerline
- Preliminary Structure

Land Use

- Parcel

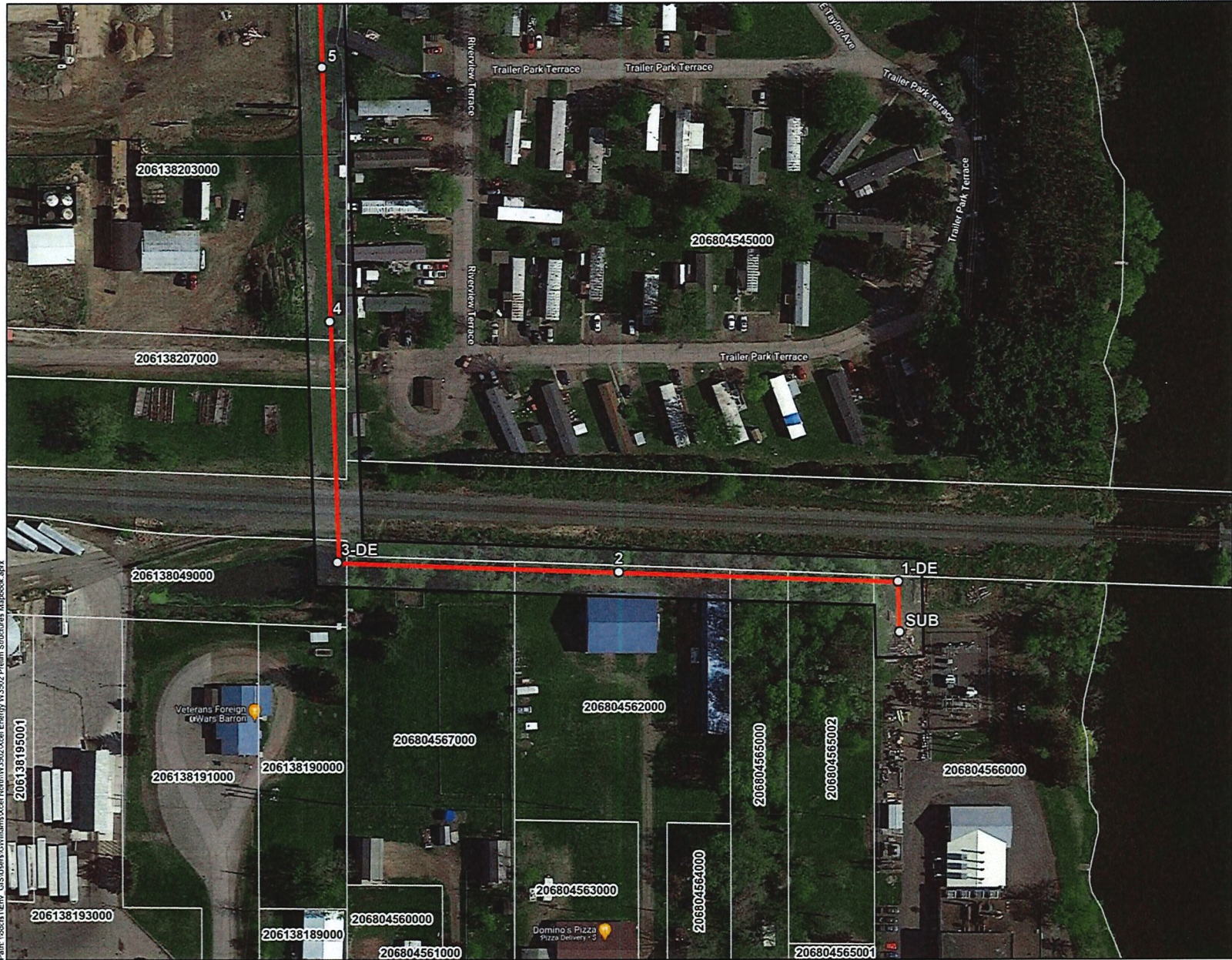
Map Component

- Map Page



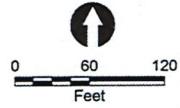
Disclaimer: The information contained herein is demonstrative only, believed to be accurate and suitable for limited, internal Xcel Energy use only. Maps are not to scale. All matters depicted including but not limited to utility facilities, locations and materials are preliminary only and subject to change without notice. Xcel Energy makes no warranty as to the accuracy or suitability of any information contained herein for use by third parties for any particular purpose. The accuracy of this map and the information depicted should be verified prior to use. The user shall assume all risk and responsibility for any and all damages, including consequential damages, which may arise from the user's reliance on this information.

Date: 3/17/2023



Path: \\sdc\fs1\IE\er GISUsers\GISUsers\Xcel\North\W3502\Xcel Energy W3502 Prelim Structure Mapbook.sxd

W3502 BON RCM LOOP TO W3503
 Preliminary Structure Locations
 Page 1 of 13

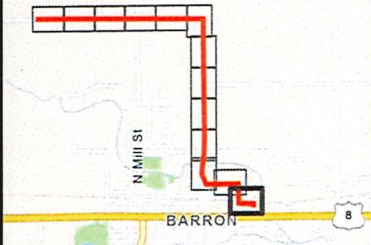


Project Components

- Project Centerline
- Preliminary Structure
- ▭ Proposed Easement

Land Use

- 101010101 Parcel with Parcel ID

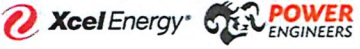
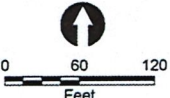


Disclaimer: The information contained herein is demonstrative only, believed to be accurate and suitable for limited, internal Xcel Energy use only. Maps are not to scale. All matters depicted including but not limited to utility facilities, locations and materials are preliminary only and subject to change without notice. Xcel Energy makes no warranty as to the accuracy or suitability of any information contained herein for use by third parties for any particular purpose. The accuracy of this map and the information depicted should be verified prior to use. The user shall assume all risk and responsibility for any and all damages, including consequential damages, which may arise from the user's reliance on this information.

Date: 3/29/2023



W3502 BON RCM LOOP TO W3503
 Preliminary Structure Locations
 Page 2 of 13

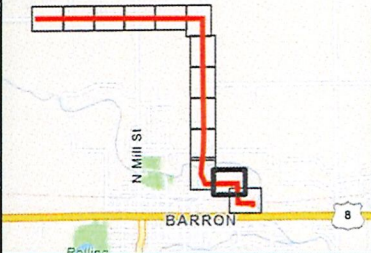


Project Components

- Project Centerline
- Preliminary Structure
- ▭ Proposed Easement

Land Use

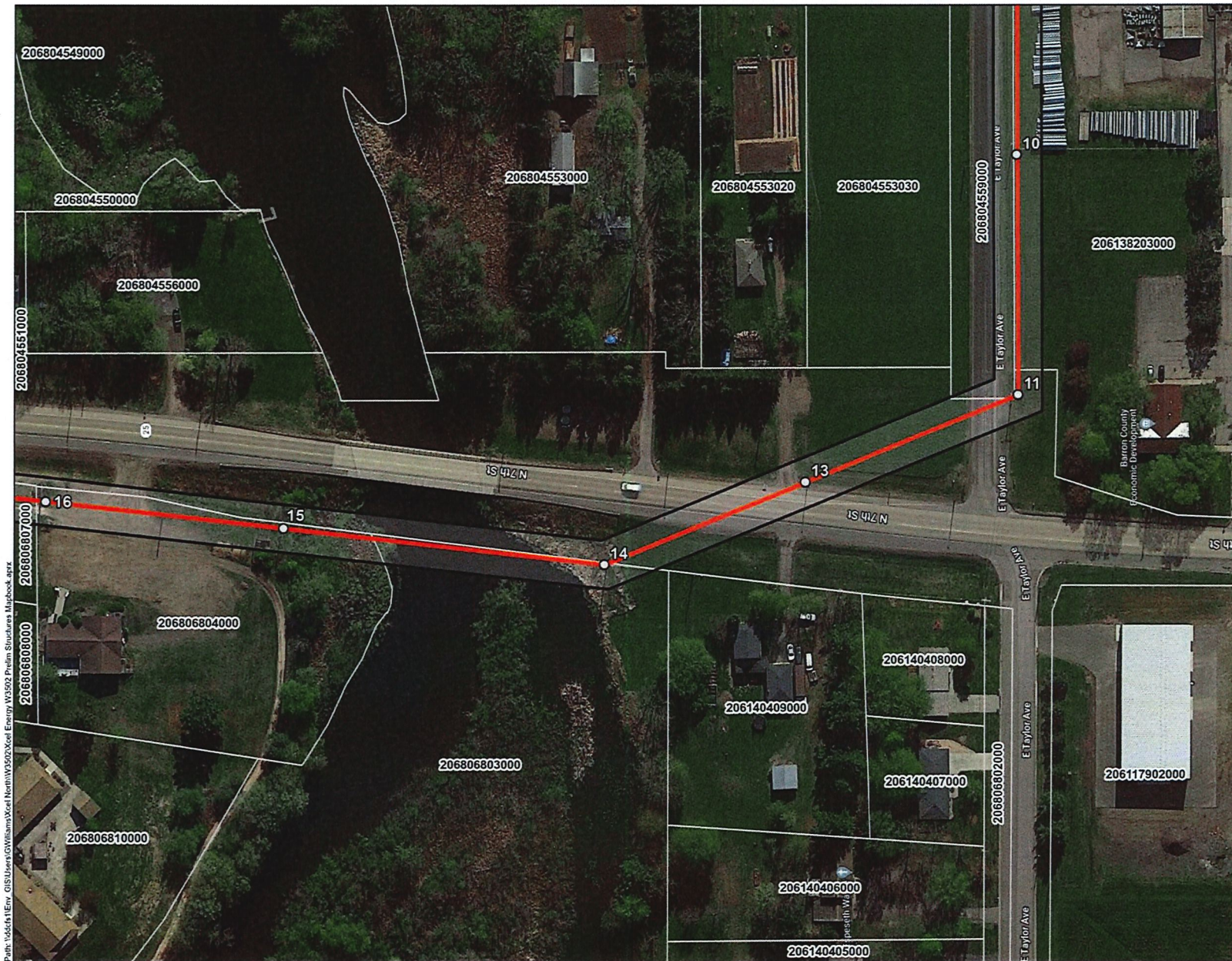
- 101010101 Parcel with Parcel ID



Disclaimer: The information contained herein is demonstrative only, believed to be accurate and suitable for limited, internal Xcel Energy use only. Maps are not to scale. All matters depicted including but not limited to utility facilities, locations and materials are preliminary only and subject to change without notice. Xcel Energy makes no warranty as to the accuracy or suitability of any information contained herein for use by third parties for any particular purpose. The accuracy of this map and the information depicted should be verified prior to use. The user shall assume all risk and responsibility for any and all damages, including consequential damages, which may arise from the user's reliance on this information.

Date: 3/29/2023

Path: \\sdc611\1\Envr GIS\Users\GWilliams\Xcel\North\W3502\Xcel Energy W3502 Prelim Structures Mapbook.mxd



Path: \\sdc411\Env_GIS\Users\GWilliams\Xcel\North\W3502\Xcel_Energy_W3502_Prelim_Structures_Mapbook.aprx

W3502 BON RCM LOOP TO W3503
 Preliminary Structure Locations
 Page 3 of 13

0 60 120
 Feet

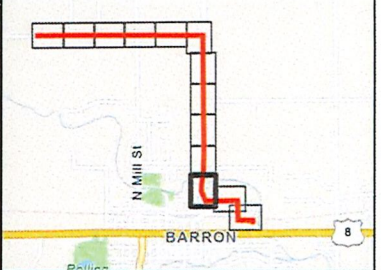
Xcel Energy **POWER ENGINEERS**

Project Components

- Project Centerline
- Preliminary Structure
- Proposed Easement

Land Use

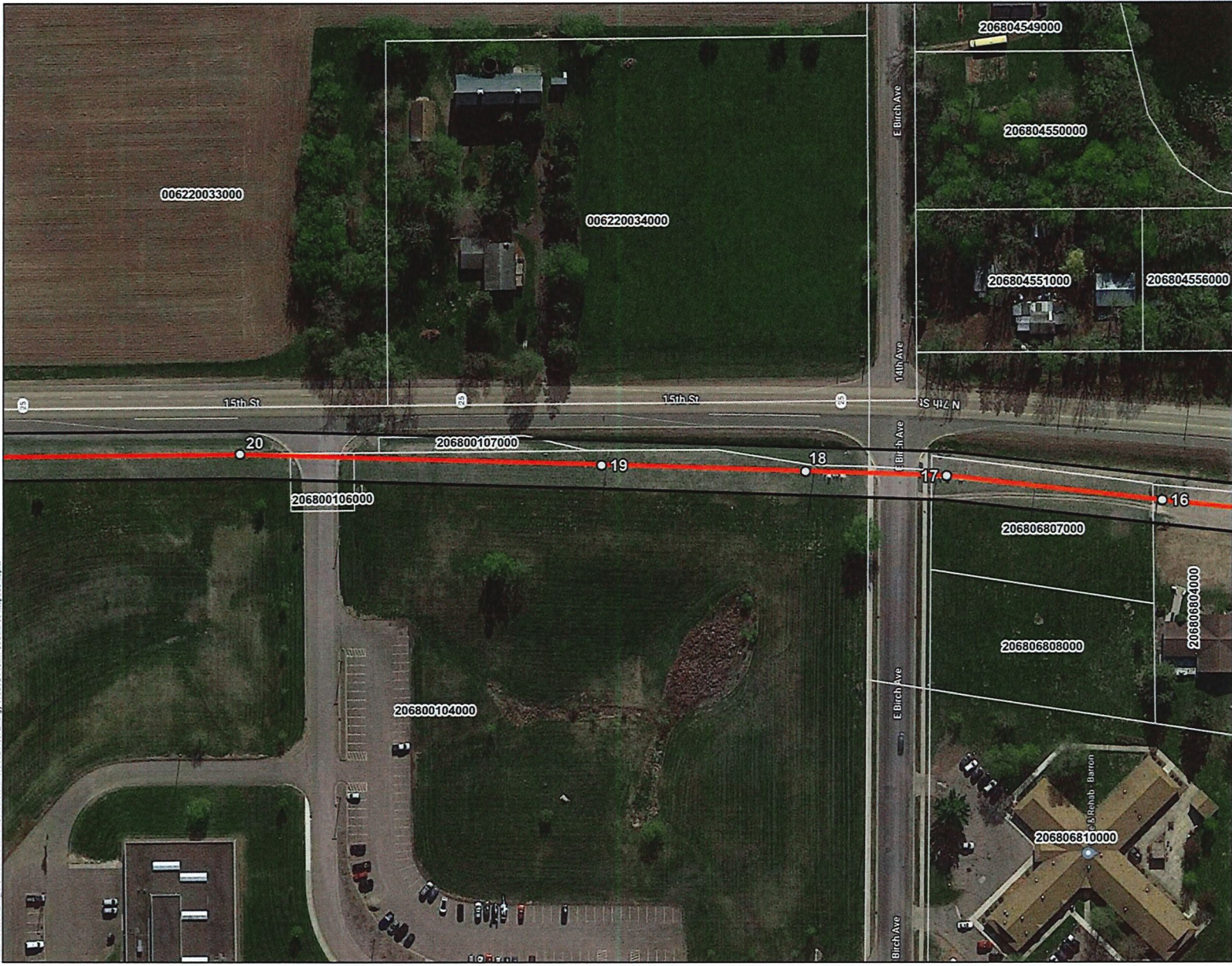
101010101 Parcel with Parcel ID



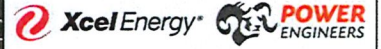
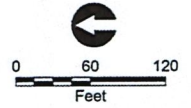
Disclaimer: The information contained herein is demonstrative only, believed to be accurate and suitable for limited, internal Xcel Energy use only. Maps are not to scale. All matters depicted including but not limited to utility facilities, locations and materials are preliminary only and subject to change without notice. Xcel Energy makes no warranty as to the accuracy or suitability of any information contained herein for use by third parties for any particular purpose. The accuracy of this map and the information depicted should be verified prior to use. The user shall assume all risk and responsibility for any and all damages, including consequential damages, which may arise from the user's reliance on this information.

Date: 3/29/2023

Path: \\ds1411\env\GISUsers\GWilliams\Xcel\North\W3502\Xcel Energy W3502 Prelim Structures Mapbook.aprx



W3502 BON RCM LOOP TO W3503
 Preliminary Structure Locations
 Page 4 of 13



Project Components

- Project Centerline
- Preliminary Structure
- Proposed Easement

Land Use

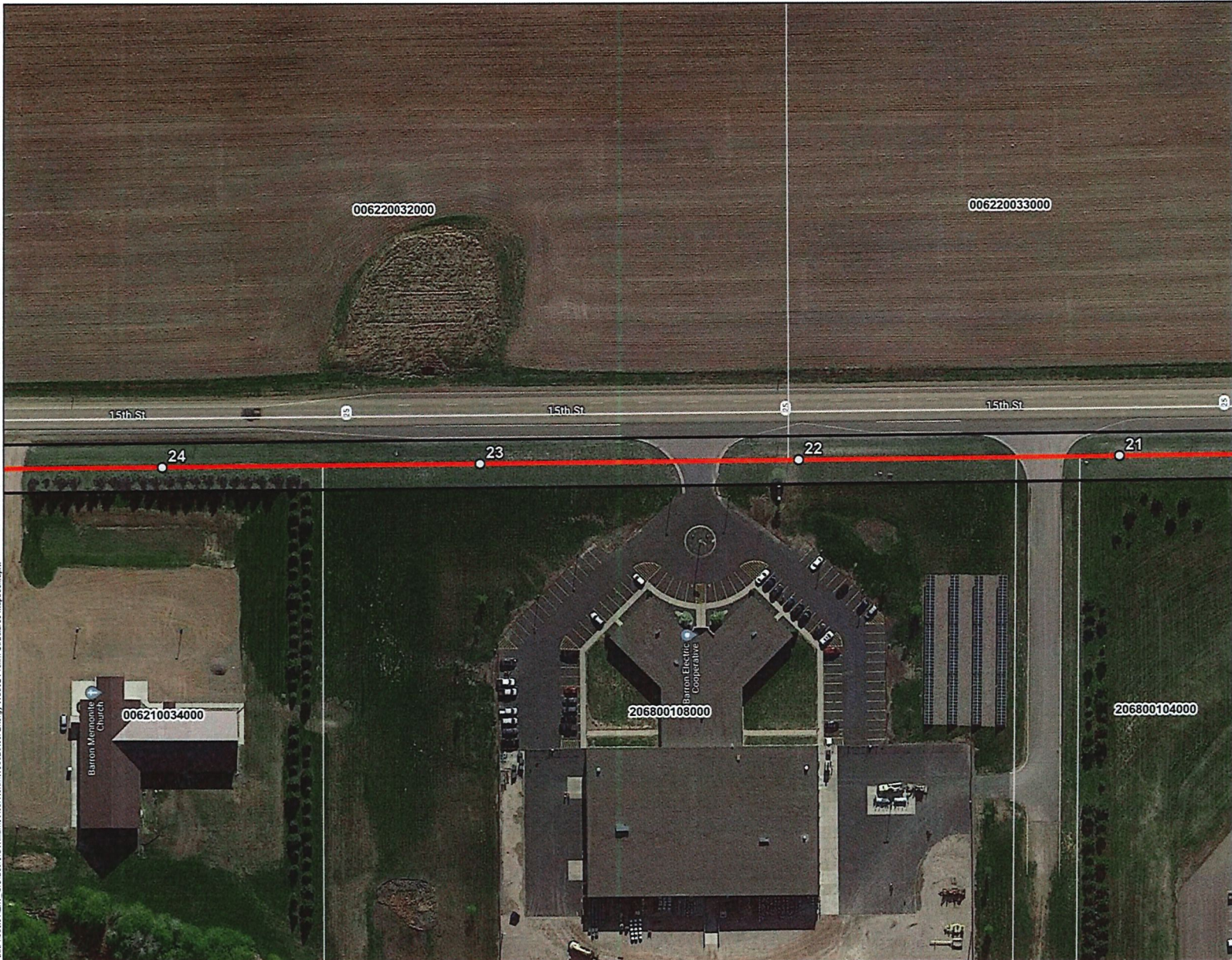
- 101010101 Parcel with Parcel ID



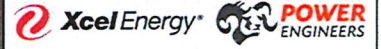
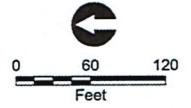
Disclaimer: The information contained herein is demonstrative only, believed to be accurate and suitable for limited, internal Xcel Energy use only. Maps are not to scale. All matters depicted including but not limited to utility facilities, locations and materials are preliminary only and subject to change without notice. Xcel Energy makes no warranty as to the accuracy or suitability of any information contained herein for use by third parties for any particular purpose. The accuracy of this map and the information depicted should be verified prior to use. The user shall assume all risk and responsibility for any and all damages, including consequential damages, which may arise from the user's reliance on this information.

Date: 3/29/2023

Path: \\ds6411\Enr_GISUsers\G\Williams\Xcel\North\W3502\Xcel Energy\W3502 Prelim Structures Mapbook_srx



W3502 BON RCM LOOP TO W3503
Preliminary Structure Locations
Page 5 of 13

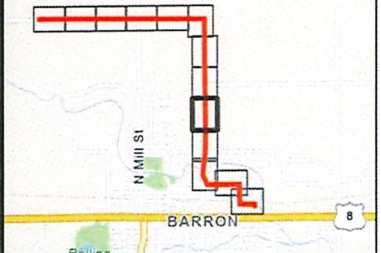


Project Components

- Project Centerline
- Preliminary Structure
- Proposed Easement

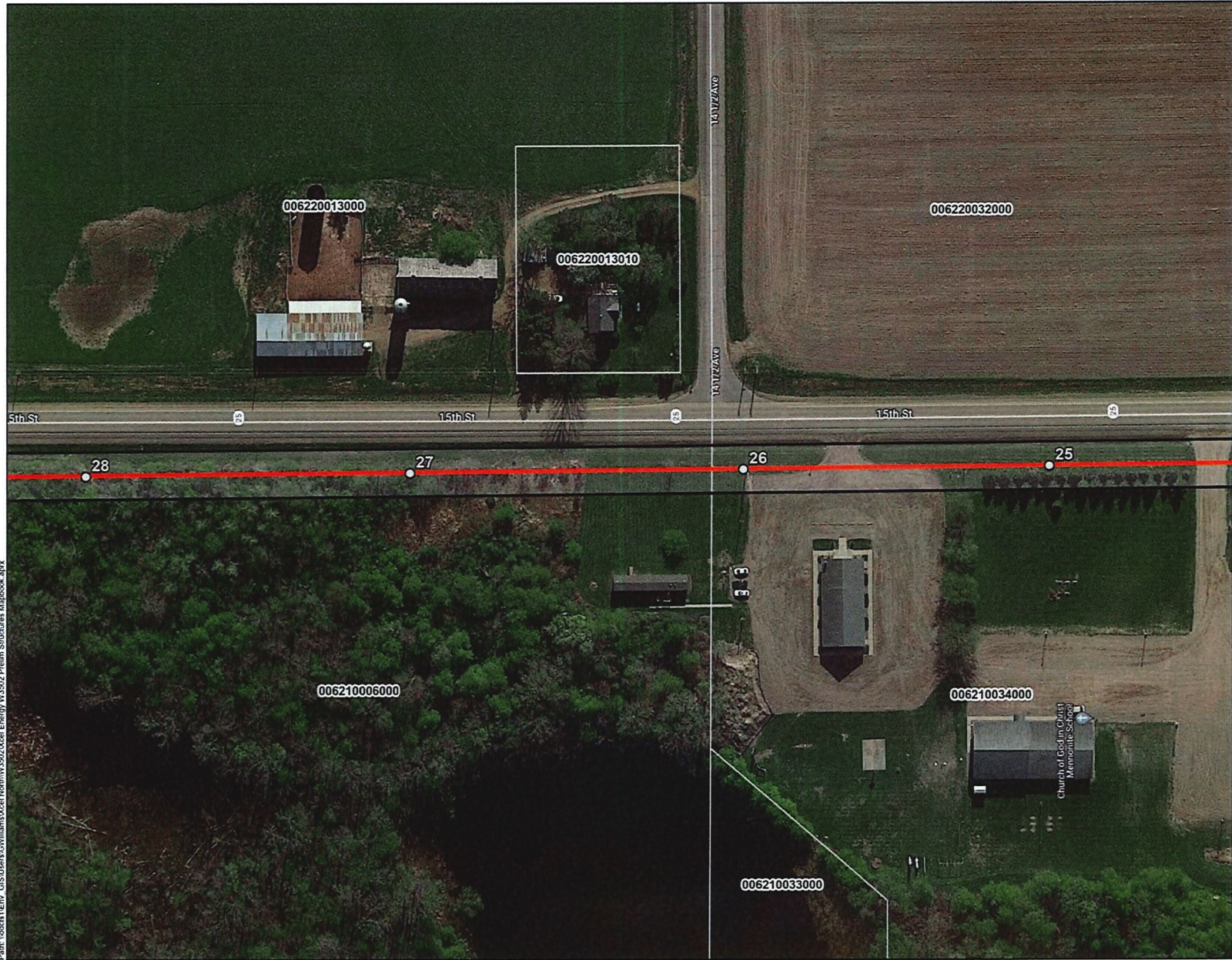
Land Use

- 101010101 Parcel with Parcel ID

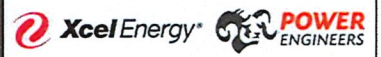
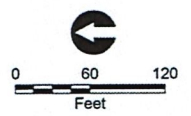


Disclaimer: The information contained herein is demonstrative only, believed to be accurate and suitable for limited, internal Xcel Energy use only. Maps are not to scale. All matters depicted including but not limited to utility facilities, locations and materials are preliminary only and subject to change without notice. Xcel Energy makes no warranty as to the accuracy or suitability of any information contained herein for use by third parties for any particular purpose. The accuracy of this map and the information depicted should be verified prior to use. The user shall assume all risk and responsibility for any and all damages, including consequential damages, which may arise from the user's reliance on this information.

Date: 3/29/2023



W3502 BON RCM LOOP TO W3503
 Preliminary Structure Locations
 Page 6 of 13



Project Components

- Project Centerline
- Preliminary Structure
- Proposed Easement

Land Use

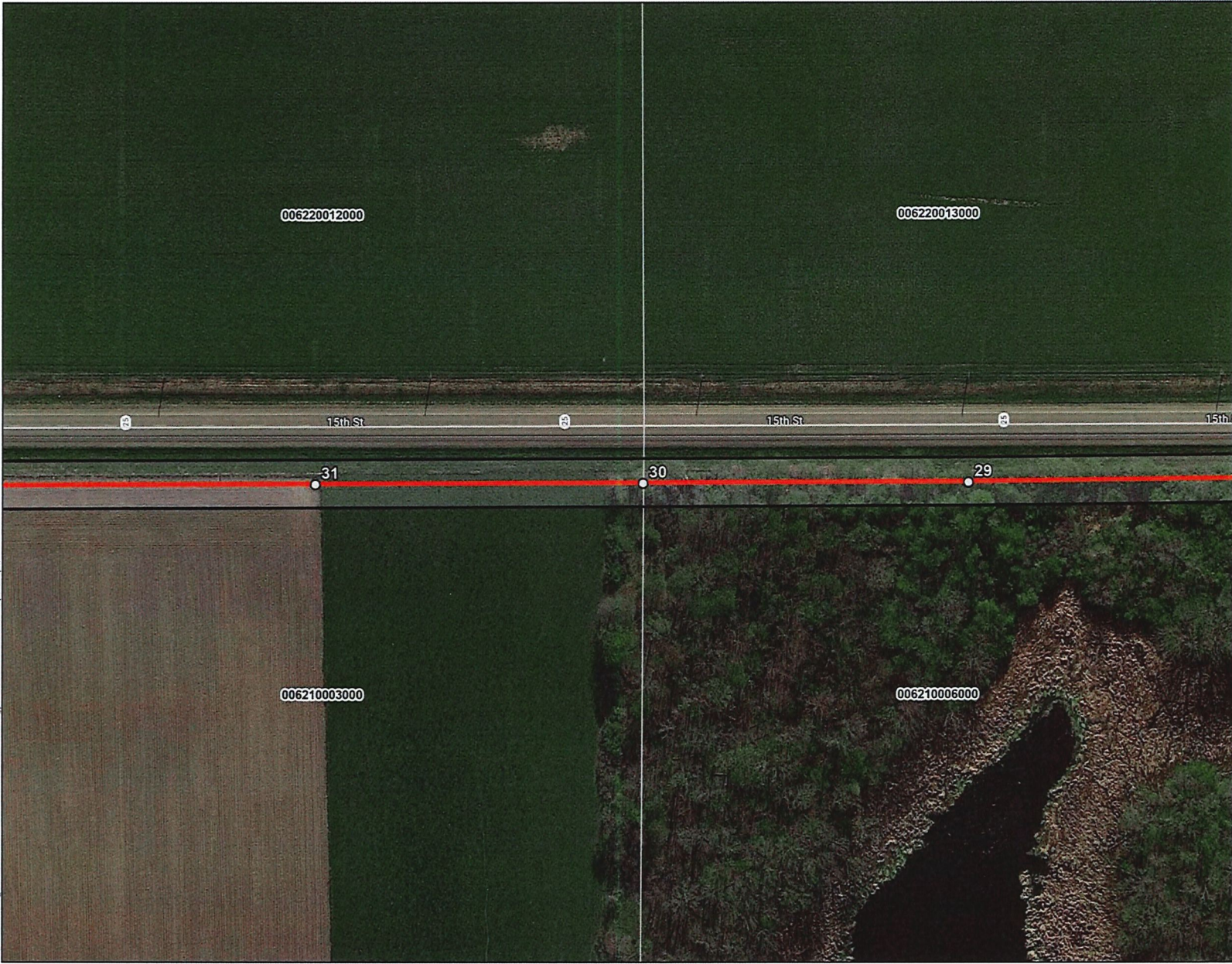
- Parcel with Parcel ID



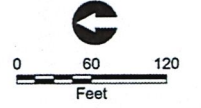
Disclaimer: The information contained herein is demonstrative only, believed to be accurate and suitable for limited, internal Xcel Energy use only. Maps are not to scale. All matters depicted including but not limited to utility facilities, locations and materials are preliminary only and subject to change without notice. Xcel Energy makes no warranty as to the accuracy or suitability of any information contained herein for use by third parties for any particular purpose. The accuracy of this map and the information depicted should be verified prior to use. The user shall assume all risk and responsibility for any and all damages, including consequential damages, which may arise from the user's reliance on this information.

Date: 3/29/2023

Path: I:\66411\Envr GIS\Users\GWT\maps\Xcel\North\W3502\Xcel Energy W3502 Prelim Structures Mapbook 19rx



W3502 BON RCM LOOP TO W3503
 Preliminary Structure Locations
 Page 7 of 13



Project Components

- Project Centerline
- Preliminary Structure
- Proposed Easement

Land Use

101010101 Parcel with Parcel ID



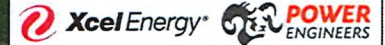
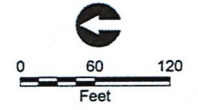
Disclaimer: The information contained herein is demonstrative only, believed to be accurate and suitable for limited, internal Xcel Energy use only. Maps are not to scale. All matters depicted including but not limited to utility facilities, locations and materials are preliminary only and subject to change without notice. Xcel Energy makes no warranty as to the accuracy or suitability of any information contained herein for use by third parties for any particular purpose. The accuracy of this map and the information depicted should be verified prior to use. The user shall assume all risk and responsibility for any and all damages, including consequential damages, which may arise from the user's reliance on this information.

Date: 3/29/2023

Path: \\sdc\fs1\Envr GIS Users\GIS\Williams\Xcel\North\W3502\Xcel Energy W3502 Prelim Structures Mapbook.aprx



W3502 BON RCM LOOP TO W3503
 Preliminary Structure Locations
 Page 8 of 13

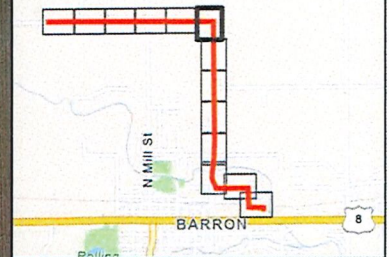


Project Components

- Project Centerline
- Preliminary Structure
- Proposed Easement

Land Use

101010101 Parcel with Parcel ID



Disclaimer: The information contained herein is demonstrative only, believed to be accurate and suitable for limited, internal Xcel Energy use only. Maps are not to scale. All matters depicted including but not limited to utility facilities, locations and materials are preliminary only and subject to change without notice. Xcel Energy makes no warranty as to the accuracy or suitability of any information contained herein for use by third parties for any particular purpose. The accuracy of this map and the information depicted should be verified prior to use. The user shall assume all risk and responsibility for any and all damages, including consequential damages, which may arise from the user's reliance on this information.

Date: 3/29/2023

Path: \\sd\fs1\Envr GIS\Users\G\Williams\Xcel\Herdin\W3502\Xcel Energy W3502 Prelim Structures Mapbook.aprx



W3502 BON RCM LOOP TO W3503
 Preliminary Structure Locations
 Page 9 of 13

0 60 120
 Feet

Xcel Energy **POWER ENGINEERS**

Project Components

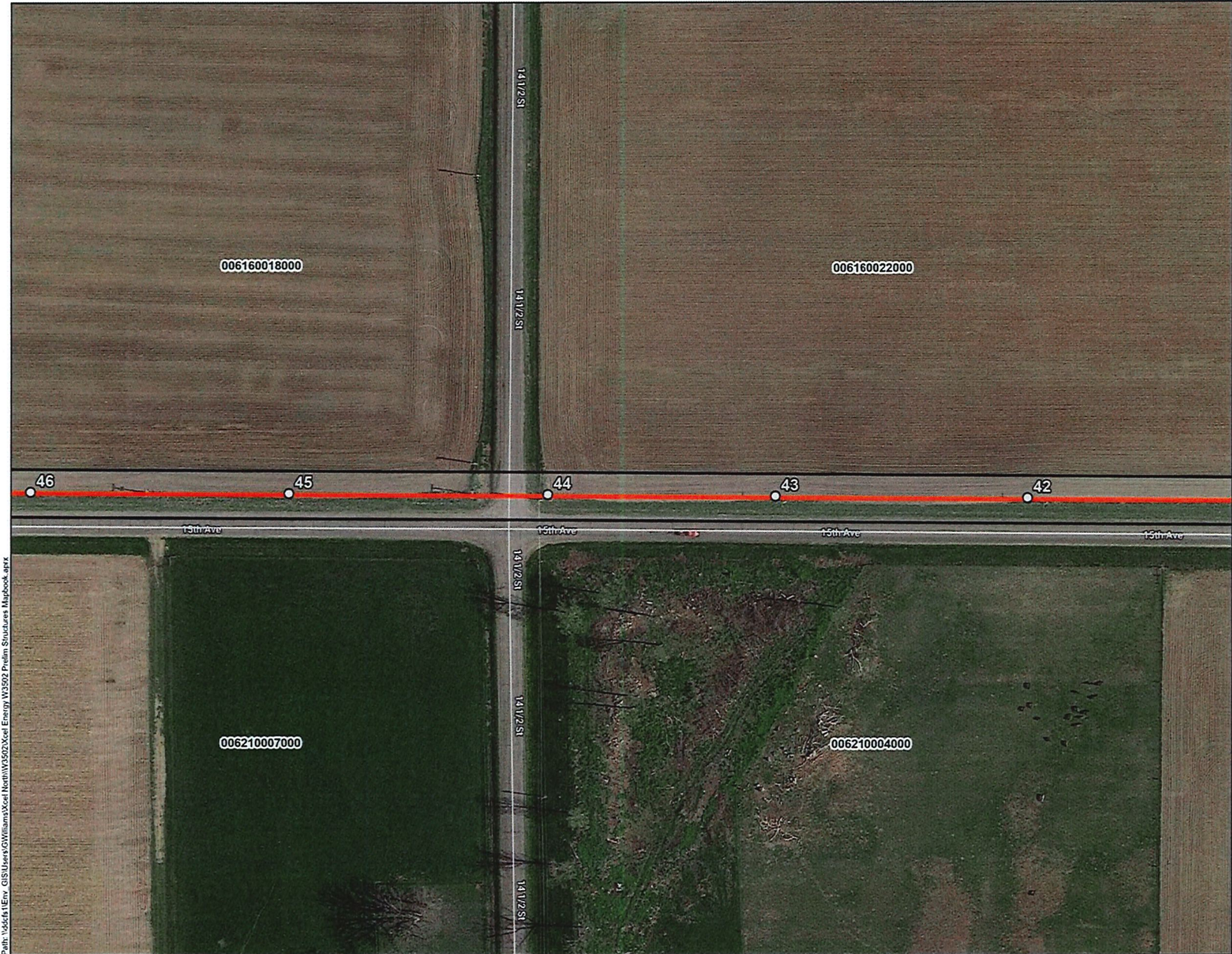
- Project Centerline
- Preliminary Structure
- ▭ Proposed Easement

Land Use

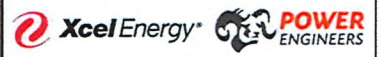
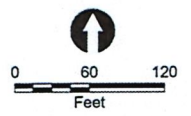
101010101 Parcel with Parcel ID

Disclaimer: The information contained herein is demonstrative only, believed to be accurate and suitable for limited, internal Xcel Energy use only. Maps are not to scale. All matters depicted including but not limited to utility facilities, locations and materials are preliminary only and subject to change without notice. Xcel Energy makes no warranty as to the accuracy or suitability of any information contained herein for use by third parties for any particular purpose. The accuracy of this map and the information depicted should be verified prior to use. The user shall assume all risk and responsibility for any and all damages, including consequential damages, which may arise from the user's reliance on this information.

Date: 3/29/2023



W3502 BON RCM LOOP TO W3503
 Preliminary Structure Locations
 Page 10 of 13

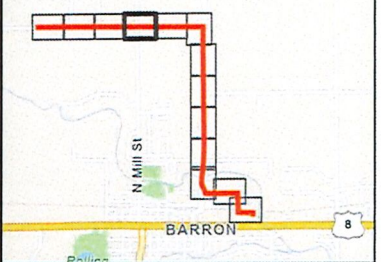


Project Components

- Project Centerline
- Preliminary Structure
- ▭ Proposed Easement

Land Use

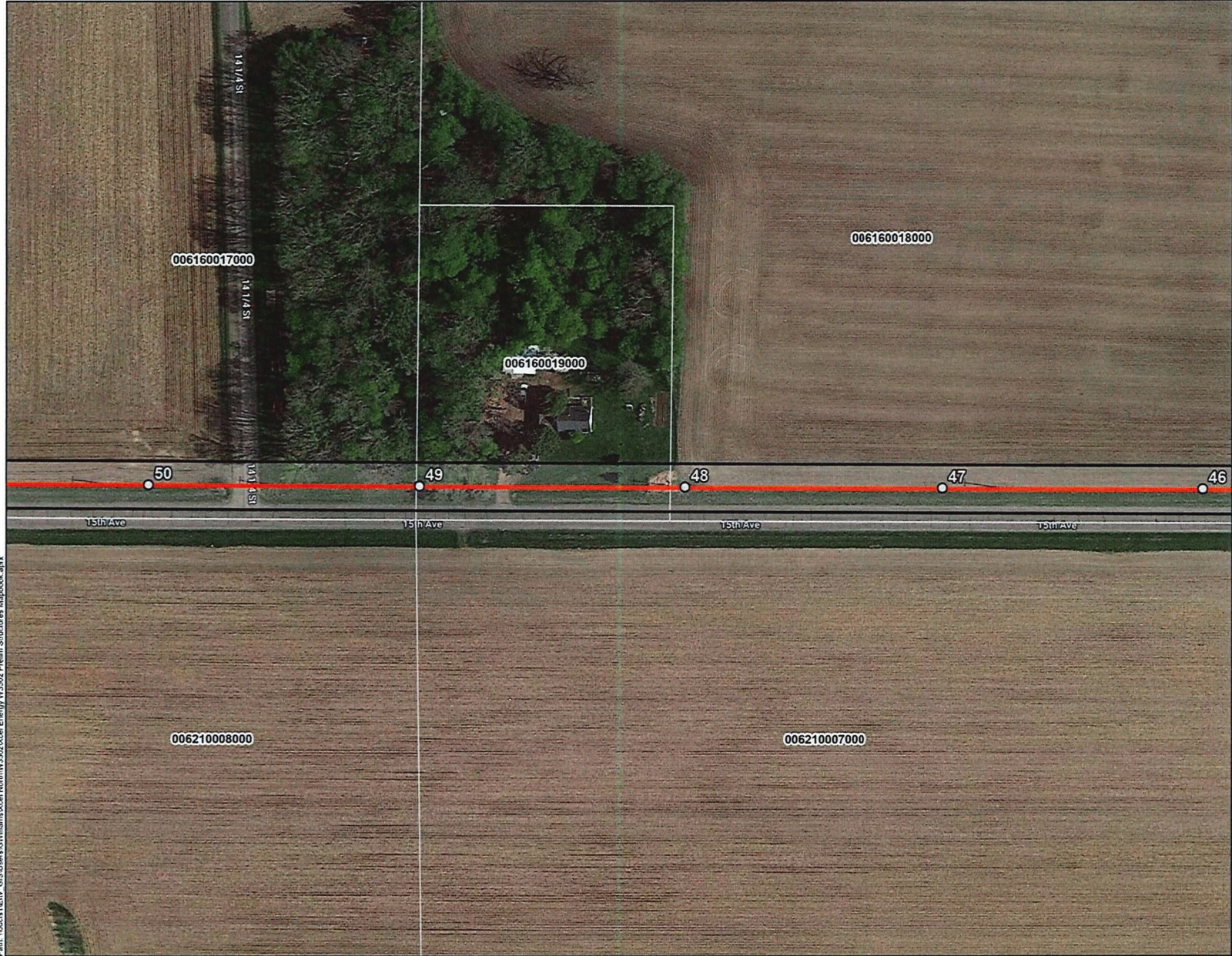
- 101010101 Parcel with Parcel ID



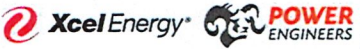
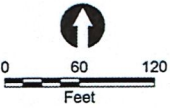
Disclaimer: The information contained herein is demonstrative only, believed to be accurate and suitable for limited, internal Xcel Energy use only. Maps are not to scale. All matters depicted including but not limited to utility facilities, locations and materials are preliminary only and subject to change without notice. Xcel Energy makes no warranty as to the accuracy or suitability of any information contained herein for use by third parties for any particular purpose. The accuracy of this map and the information depicted should be verified prior to use. The user shall assume all risk and responsibility for any and all damages, including consequential damages, which may arise from the user's reliance on this information.

Date: 3/29/2023

Path: \\s66411\Env - GIS\Users\G\Williams\Xcel\North\W3502\Xcel Energy W3502 Prelim Structures Mapbook.aprx



W3502 BON RCM LOOP TO W3503
 Preliminary Structure Locations
 Page 11 of 13



Project Components

- Project Centerline
- Preliminary Structure
- ▭ Proposed Easement

Land Use

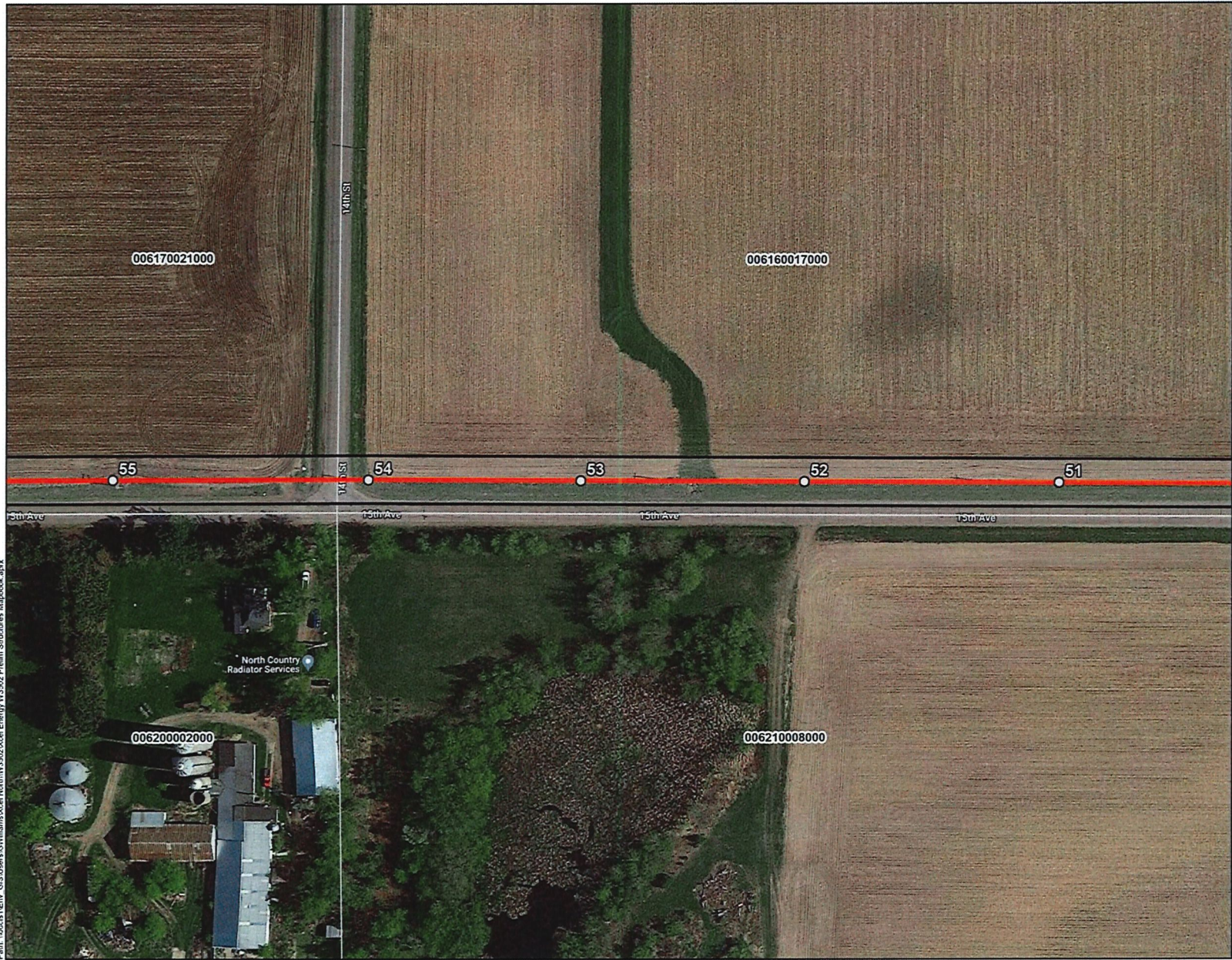
- 101010101 Parcel with Parcel ID



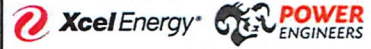
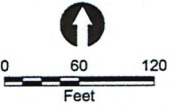
Disclaimer: The information contained herein is demonstrative only, believed to be accurate and suitable for limited, internal Xcel Energy use only. Maps are not to scale. All matters depicted including but not limited to utility facilities, locations and materials are preliminary only and subject to change without notice. Xcel Energy makes no warranty as to the accuracy or suitability of any information contained herein for use by third parties for any particular purpose. The accuracy of this map and the information depicted should be verified prior to use. The user shall assume all risk and responsibility for any and all damages, including consequential damages, which may arise from the user's reliance on this information.

Date: 3/29/2023

Path: \\sd\ch1\Envr_GIS\Users\G\Wilson\Xcel\North\W3502\Xcel Energy W3502 Prelim Structures Mapbook.aprx



W3502 BON RCM LOOP TO W3503
 Preliminary Structure Locations
 Page 12 of 13



Project Components

- Project Centerline
- Preliminary Structure
- ▭ Proposed Easement

Land Use

101010101 Parcel with Parcel ID



Disclaimer: The information contained herein is demonstrative only, believed to be accurate and suitable for limited, internal Xcel Energy use only. Maps are not to scale. All matters depicted including but not limited to utility facilities, locations and materials are preliminary only and subject to change without notice. Xcel Energy makes no warranty as to the accuracy or suitability of any information contained herein for use by third parties for any particular purpose. The accuracy of this map and the information depicted should be verified prior to use. The user shall assume all risk and responsibility for any and all damages, including consequential damages, which may arise from the user's reliance on this information.

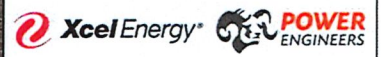
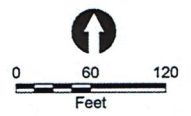
Date: 3/29/2023

Path: \\sdc411\env_GISUsers\GISUsers\Xcel\North\W3502\Xcel Energy W3502 Prelim Structures Mapbook.aprx




Path: \\sdc\fs1\Envr_GISUsers\G\Williams\Xcel\North\W3502\Xcel_Energy_W3502 Prelim Structures Mapbook.aprx



W3502 BON RCM LOOP TO W3503
Preliminary Structure Locations
Page 13 of 13

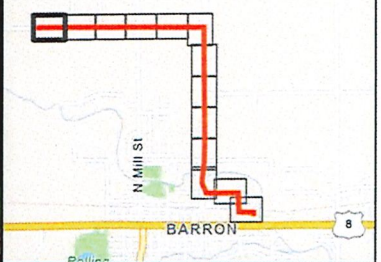


Project Components

-  Project Centerline
-  Preliminary Structure
-  Proposed Easement

Land Use

-  Parcel with Parcel ID



Disclaimer: The information contained herein is demonstrative only, believed to be accurate and suitable for limited, internal Xcel Energy use only. Maps are not to scale. All matters depicted including but not limited to utility facilities, locations and materials are preliminary only and subject to change without notice. Xcel Energy makes no warranty as to the accuracy or suitability of any information contained herein for use by third parties for any particular purpose. The accuracy of this map and the information depicted should be verified prior to use. The user shall assume all risk and responsibility for any and all damages, including consequential damages, which may arise from the user's reliance on this information.

Date: 3/29/2023



Jeff French <jeff.french@co.barron.wi.us>

Property Committee Meeting

1 message

Mark Servi <mark.servi@co.barron.wi.us>
To: Jeff French <jeff.french@co.barron.wi.us>

Wed, May 24, 2023 at 11:30 AM

Jeff,
I see the Property Committee is meeting on June 5th. I will be at Road School, and will not be in attendance at this meeting.
On the issue of the Straw Pit:
1) we have executed the lease for 2023 with the Straws, as they needed to have an answer for planting corn. You and I discussed this, and decided to do a one year lease at this time.
2) The lease includes both farm property and some pasture - a total of about 20 usable acres. Currently the lease is for \$50 Acre. There is a fence that they installed. That is located where we agreed it would be. They are NOT occupying more property than is shown on the map, which is attached. There is about 12 acres of farm land and 8 acres of pasture land.
3) The old equipment has been removed from the woods, as was discussed with the Straws in spring of 2022. It was gone right around deer season last year. Lori confirmed it again this spring.
4) The Straws would like to have a 4 or 5 year (prefer 5 year) lease so that they can properly lime, fertilize, and rotate crops.

I would recommend entering into a 5 year lease. USDA might have some better info on average rates, but a quick look online indicated that non-irrigated cropland was averaging \$145 per acre in WI, and pasture was \$36 per acre. So maybe we should say 5 year lease at \$100 per acre is \$2,000 per year?

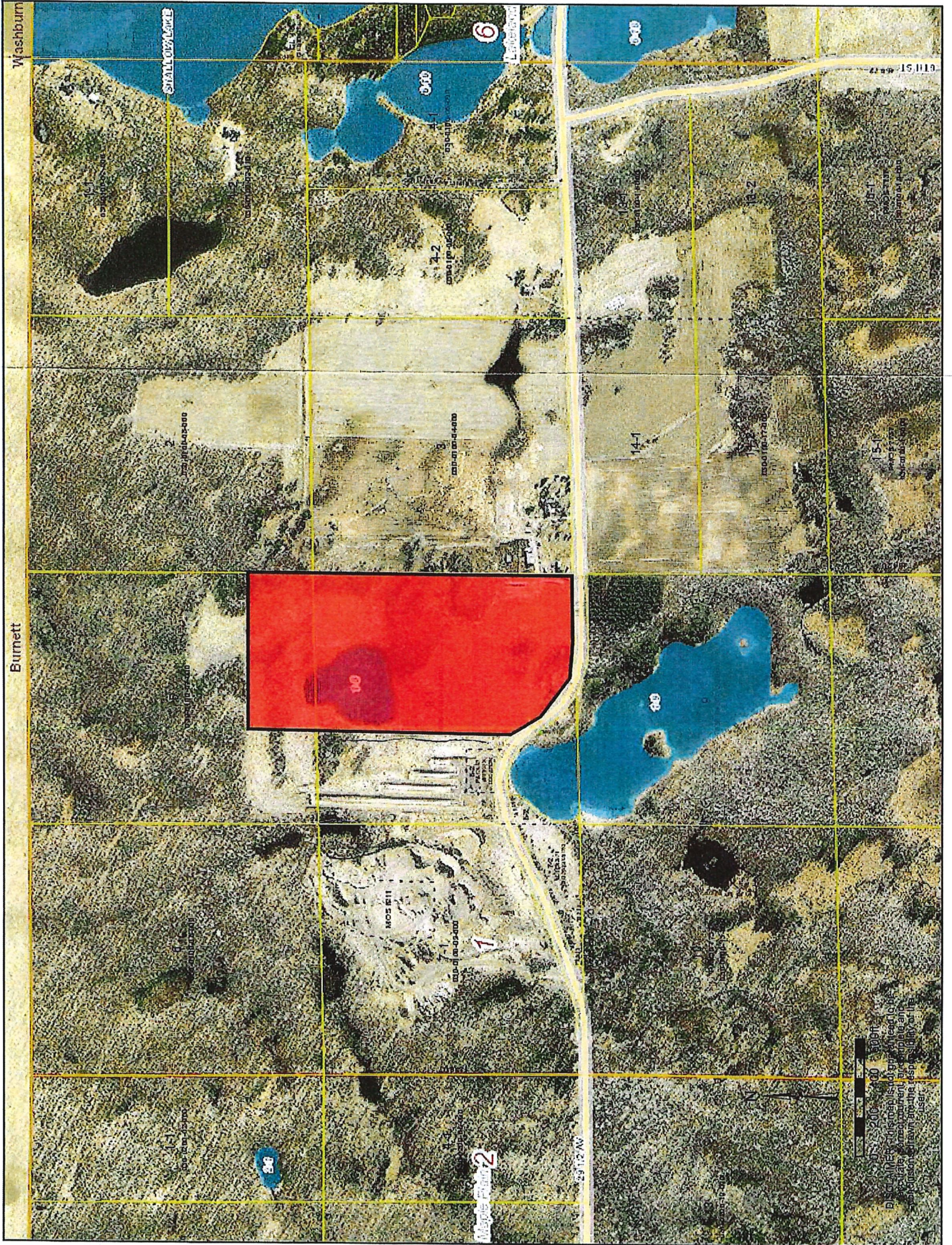
Mark Servi
Barron County Highway Commissioner

**DRIVE CAREFULLY IN WORK ZONES
OUR LIVES MATTER**

Straw Map.pdf
4827K

Washburn

Burnett



SHALLOW LAKE

6

13-2

19-1

15.11.10

13-1

14-1

18-2

19-1



MOSBY

1

19

10

Maple Creek 2

29.12.10



Disclaimer: This map is not intended to be used for any purpose other than general information. It is not a substitute for a professional survey or other legal document. The user assumes all responsibility for the accuracy and reliability of the information shown on this map.

the requirements are met. Lead Fiscal Coordinator position will then be eliminated. Carried.

ITEM #10 – ORDINANCE 2010-15 AMENDING THE PARKS AND RECREATION ORDINANCE (19.13(1)g and 19.28(3) Boat Launch User Fee)

BARRON COUNTY ORDINANCE NO. 2010-15

An Ordinance Amending the Parks and Recreation Ordinance, County of Barron, Wisconsin

The Barron County Board of Supervisors ordains as follows:

WHEREAS, the Barron County Property Committee has considered additional provisions to the County Parks and Recreation Ordinance to include a boat launch user fee; and

WHEREAS, the Property Committee recommends the adoption of Barron County Ordinance 19.13(1)(g) and 19.28(3)A. through H., as fully set forth and attached hereto; and

WHEREAS, this amendment was approved by the Property Committee on October 4, 2010 on a vote of 5-0, with Streif, Romsos, Stavran, Heinecke and Henck voting in the affirmative and no members voting against.

NOW, THEREFORE, BE IT ORDAINED, that the Barron County Parks and Recreation Ordinance be amended to include Sections 19.13(1)(g) and 19.28(3)A. through H., as attached hereto.

BE IT FURTHER ORDAINED, that this Ordinance shall be effective upon its adoption and publication and that publication of this ordinance may occur through posting in accordance with Section 985.02 of the Wisconsin Statutes.

OFFERED THIS 18th day of October, 2010.

Number of readings required: One (X) Two () Vote required for passage: Majority (X) 2/3 Entire Board (20) () Source of funding: Budgeted () General Fund (X) Grant () Contingency () Other () Details – Revenue Fiscal impact: - Current year total amount: \$ - Future years total amount: \$ - Effect on tax levy - current year - \$ - Effect on tax levy - future years - \$ Fiscal impact reviewed by County Finance Director Jeff French, County Administrator Board Action: Adopted (X) Failed () Tabled () Approved as to form by Corporation Counsel: John Muench, Corporation Counsel	Lee Romsos Property Committee Vice Chair (The Committee Chair signature verifies the action taken by the Committee.)
--	--

Motion: (Pannier/Stavran) to approve ordinance. Discussion. Fees will be a way to generate revenue and help cover the costs of the landing repairs. There are other Counties in the State that charge for the use of their landings. With approval of this ordinance, Barron County will qualify for a \$5,000 grant for the project. Annual permit fee shall be \$20 for County residents, \$30 for non-County residents and daily permit \$5. **Motion: (Moen/Pannier)** – amend ordinance under Letter B. Fees, to state,

“Annual Permit shall be valid at all improved launch sites.” Amendment carried with 5 voting No: Nyhagen, Cordes, McRoberts, Rogstad, and Horstman.

Roll Call Vote for approval of ordinance as amended, 17 Yes and 12 No. Voting No: Romsos, Erb, Koepf, Hardie, Mommsen, McRoberts, Rogstad, Horstman, Christensen, Leff, Nyhagen and Jost. Ordinance carried as amended.

19.13(1)(g) and 19.28(3) – BOAT LAUNCH USER FEES

19.13(1)(g) Boat launch user fees will be assessed at Barron County owned or operated boat launch facilities, as described in 19.28(3).

19.28(3) BOAT LAUNCH USER FEES

A. Prohibited Act.

No person shall use any County of Barron (hereinafter County) owned or operated boat launch facility listed below for launching purposes without an annual or daily launching permit. The annual permit shall be valid from April 1 of the year of issuance to March 31 of the next year. The daily permit shall only be valid during the day of purchase. Daily permits will be sold through “self” registration at each boat launch site. Annual and daily permits will also be sold at the County Clerk’s office and all establishments approved by the Property Committee.

Boat launch sites include: Waldo Carlson Park.

B. Fees.

The annual permit fee shall be \$20.00 for residents and \$30.00 for non-residents. “Resident” for the purposes of this Ordinance shall mean a resident of the County.

The daily permit fee shall be \$5.00

A boat launch is defined as the use of the launch facility for the placement of one boat into the water and for the retrieval of the boat from the water to a trailer or device used to remove the boat from the water.

All annual stickers shall be prominently placed and displayed on the left side of the rear window of the launching vehicle. The daily launching permit shall be prominently placed and displayed on the interior (dash) of the driver’s side window of the vehicle used to transport the boat to the launching area.

C. Exemptions.

Exemption from payment of the boat launch user fee may be granted for launching of certain authorized government watercraft or fire department water rescue vehicles with the express approval of the Barron County Sheriff.

D. Permit to be Affixed.

Vehicles with boat trailers or other vehicles used to transport water craft launched at any County owned or operated boat launch facility shall have affixed an annual or daily launching permit as described in the “Fees,” section.

E. Responsibility of Owner.

If any vehicle with a boat trailer that has used a boat launch without obtaining the proper permit or does not have the permit affixed as set forth in this Ordinance, and the vehicle is parked upon any street, alley, highway, park or other public grounds of the County, and the identity of the driver cannot readily be determined, the owner or person in whose name such vehicle is registered, shall be held prima facie responsible for such violation.

F. Enforcement.

The enforcement of this section of the Code of Barron County shall fall under the jurisdiction of the Barron County Sheriff’s Department. Law Enforcement officers observing violation of this Ordinance may issue citations.

Failure to pay the fee for the launching permit or to properly display the launching permit at all times that the motor vehicle is parked while the watercraft is in the waters of Barron County shall be deemed to be in violation of this ordinance.

The Sheriff shall develop a citation for use in enforcing parking violations described in Chapter 19.13(1)(g) and 19.28(3). The citation shall provide that payment of the forfeiture shall be mailed or delivered to the Barron County Sheriff's Office and shall not be filed with any court. The amount of the forfeiture for such violation shall be paid in cash, money order, or bank check and shall be made payable to Barron County. If the defendant informs the Sheriff's Office that he or she wished to contest the parking citation or the citation is not paid within 30 days, the citation shall be dismissed and either a uniform traffic citation or uniform municipal citation, as applicable shall be issued and filed with the Court, which will include all mandatory court costs.

G. Violations and Penalties.

Any person who shall violate any restriction under Chapter 19.13(1)(g) and 19.28(3). shall forfeit \$25.00 for each violation, plus, if applicable, the costs of removal and storage of the vehicle. If the forfeiture is not paid within 30 days, or is contested as prescribed above, and a uniform traffic citation or uniform municipal citation is issued, said citation shall include mandatory court fees.

H. Use of Launch Fee Revenue.

The net revenue resulting from the sale and enforcement of Launch Fee Permits shall be used to establish, maintain and improve boat launch facilities with the County of Barron. NR 1.91

Break at 9:00pm. Reconvene at 9:13pm

ITEM #11 – 2011 BUDGET – French reviewed the 2011 Published Budget with the Board. As published, the total tax levy for Barron County will increase by \$338,028 which is 2%. A public hearing regarding the budget will be held on Monday, November 1, 2010 at 6:00pm in the Auditorium. The 2011 budget will be adopted at the November 9, 2010 County Board meeting at 9:00am in the Auditorium. The 2011 Budget is posted on the County website for review.

ITEM #12 – PRESENTATION OF 2009 AUDIT REPORT – Jodi Busch, Lead Fiscal Coordinator, presented the 2009 Executive Audit Summary to the Board. Barron County received the highest audit option, unqualified, which helps the County with interest rates and bond ratings. The report is posted on the County website for review.

ITEM #13 – COUNTY BOARD REDISTRICTING/SIZING WORK GROUP UPDATE (Informal Discussion) – Supervisor Ken Jost, Chair for the Redistricting/Sizing Work Group, addressed the Board regarding the importance of public and Board participation in the decision of the redistricting and sizing of the Board. If there is to be a resolution, it must be brought and approved by the Board at the February 2011 Board meeting. Information on past and estimated populations, current voting districts and Census blocks were reviewed with the Board. Public Hearing is to be scheduled directly following the Public Budget hearing on November 1, 2010. Information is posted on the County website for review.

ITEM #14 – REPORT FROM COUNTY ADMINISTRATOR – Jeff French discussed with Board.

a) Energy Policy Work Group – Policy binder has been created. Please see Jeff if interested in reviewing the information.

b) WCA Conference Update – Jeff French, Jess Miller, Ken Mosentine and Pete Olson attended the conference. Barron County was highlighted for their success on

the Geo Thermal program at one of the sessions.

ITEM #15 – APPOINTMENTS – None at this time.

ITEM #16 – CLAIMS, PETITIONS AND CORRESPONDENCE – Information regarding the Large Herd Dairy Herdsmanship State Title was read to the Board. This is the 3rd consecutive year that Barron County has taken the State Title. There are 24 youth involved with this program. Barron County has the highest showmanship for the past 35 years.

ITEM #17 – SUGGESTIONS FOR FUTURE AGENDA ITEMS – Request to have Public Hearing on November 1, 2010 regarding the Redistricting/Sizing of the County Board. Add to the agenda for November 1st and 9th meetings. Budget amendments.

ITEM #18 – ADJOURNMENT – 10:46pm

Respectfully submitted,

Jennifer Horstman, Deputy County Clerk

**MINUTES ARE NOT OFFICIAL UNTIL APPROVED
AT NEXT MEETING BY COUNTY BOARD.**

FOREST & RECREATION	15	OUTEQUIP	20936	1	ERSKINE 900551 STUMP GRINDER	12/28/20	10	6,121.00	612.10	612.10	1,224.20	0.00	4,896.80
FOREST & RECREATION	15	PARK	20049	1	POKEGAMA BOAT LANDING REPAVEMENT	11/29/12	20	21,059.36	9,564.48	1,052.97	10,617.45	0.00	10,441.91
FOREST & RECREATION	15	PARK	20462	1	BLACKTOP TURTLE LAKE BOAT LANDING	9/30/16	20	16,303.91	4,279.80	815.20	5,095.00	0.00	11,208.91
FOREST & RECREATION	15	PARK	20463	1	BLACKTOP ARLAND RIFLE RANGE	12/30/16	20	31,223.13	7,805.80	1,561.16	9,366.96	0.00	21,856.17
FOREST & RECREATION	15	POLICE	12551	1	Surveillance Camera - Groundhog	9/1/05	10	7,025.00	7,025.00	0.00	7,025.00	0.00	0.00
FOREST & RECREATION	15	REC	15129	1	STEEL DOCK @ POKEGAMA	4/27/09	10	5,418.00	5,418.00	0.00	5,418.00	0.00	0.00
FOREST & RECREATION	15	REC	20040	1	24' PJ EQUIPMENT TILT TRAILER	9/13/12	10	5,379.50	5,020.87	358.63	5,379.50	0.00	0.00
FOREST & RECREATION	15	REC	20041	1	PLAYGROUND EQUIP FOR WALDO CARLSON	1/12/12	10	11,346.84	11,346.84	0.00	11,346.84	0.00	0.00
FOREST & RECREATION	15	ROADSBLK	12472	1	NEW MUSEUM ENTRANCE ROAD	6/30/03	25	8,407.00	6,221.18	336.28	6,557.46	0.00	1,849.54
FOREST & RECREATION	15	ROADSBLK	13633	1	Re-pave Waldo Carlson Park Campground Road	12/15/04	25	24,000.00	16,400.00	960.00	17,360.00	0.00	6,640.00
FOREST & RECREATION	15	SNOBRDGS	12549	1	Portable Temporary Bridge 30'	12/18/03	25	7,500.00	5,400.00	300.00	5,700.00	0.00	1,800.00
FOREST & RECREATION	15	SOFT	20123	1	PARKS RESERVATION SYSTEM	2/7/13	5	13,245.00	13,245.00	0.00	13,245.00	0.00	0.00
GENERAL	99	BRIDGE	B-03-0122	1	CTH T VERMILLION RIVER	7/1/91	50	78,776.00	46,477.84	1,575.52	48,053.36	0.00	30,722.64
GENERAL	99	BRIDGE	P-03-0053	1	CTH T VERMILLION RIVER	7/1/65	50	36,111.00	36,111.00	0.00	36,111.00	0.00	0.00
GENERAL	99	BRIDGE	P-03-0996	1	CTH D FOUR MILE CREEK	7/1/65	50	19,426.00	19,426.00	0.00	19,426.00	0.00	0.00
GENERAL	99	CARS	15380	1	2014 FORD FOCUS	10/31/13	5	18,472.00	18,472.00	0.00	18,472.00	0.00	0.00
GENERAL	99	CARSSQUADS	15458	1	2013 CHEVROLET EQUINOX SUV	10/8/12	4	23,833.50	23,833.50	0.00	23,833.50	0.00	0.00
GENERAL	99	CARSSQUADS	20181	1	2015 FORD EXPLORER	11/3/14	4	28,412.50	28,412.50	0.00	28,412.50	0.00	0.00
GENERAL	99	CARSSQUADS	20613	1	2018 FORD EXPLORER INTERCEPTOR	8/20/18	4	30,564.00	25,470.00	1,910.25	27,380.25	0.00	3,183.75
GENERAL	99	CARSSQUADS	20614	1	2018 FORD EXPLORER INTERCEPTOR	8/20/18	4	30,564.00	25,470.00	1,910.25	27,380.25	0.00	3,183.75
GENERAL	99	CARSSQUADS	20619	1	2018 FORD EXPLORER	9/6/18	4	30,754.50	25,628.77	1,922.16	27,550.93	0.00	3,203.57
GENERAL	99	CARSSQUADS	20621	1	2018 FORD EXPLORER INTERCEPTOR	9/20/18	4	30,564.00	24,833.25	1,910.25	26,743.50	0.00	3,820.50
GENERAL	99	CARSSQUADS	20671	1	2019 FORD EXPLORER	4/26/19	4	38,389.86	25,593.25	7,997.89	33,591.14	0.00	4,798.72
GENERAL	99	CARSSQUADS	20682	1	2019 DODGE RAM 1500	9/12/19	4	35,259.90	20,568.29	8,080.39	28,648.68	0.00	6,611.22
GENERAL	99	CARSSQUADS	20684	1	2020 FORD EXPLORER INTERCEPTOR	9/24/19	4	38,376.70	21,566.88	2,398.54	23,965.42	0.00	14,391.28
GENERAL	99	CARSSQUADS	20803	1	2020 FORD EXPLORER	1/21/21	4	39,655.17	9,087.64	9,087.64	18,175.28	0.00	21,479.89
GENERAL	99	COMP/TECH	15171	1	AUDIO EQUIPMENT FOR COURTS	12/31/08	5	9,817.01	9,817.01	0.00	9,817.01	0.00	0.00
GENERAL	99	COMP/TECH	16001	1	RICOH MP 5054SPF	1/29/16	5	5,306.00	5,306.00	0.00	5,306.00	0.00	0.00
GENERAL	99	COMP/TECH	16002	1	RICOH MP C4503	1/29/16	5	5,583.00	5,583.00	0.00	5,583.00	0.00	0.00
GENERAL	99	COMP/TECH	16003	1	RICOH MP C4503	1/29/16	5	5,897.00	5,897.00	0.00	5,897.00	0.00	0.00
GENERAL	99	COMP/TECH	16013	1	RIMAGE PROFESSIONAL 5410N	1/18/16	5	7,500.00	7,500.00	0.00	7,500.00	0.00	0.00
GENERAL	99	COMP/TECH	16059	1	RICOH MP 5054spf	4/24/17	5	5,323.00	4,968.13	354.87	5,323.00	0.00	0.00
GENERAL	99	COMP/TECH	16182	1	SONICWALL-NSA 4600	7/14/17	5	9,388.69	8,449.83	938.86	9,388.69	0.00	0.00
GENERAL	99	COMP/TECH	20283	1	SQUAD VIDEO SYSTEM	5/3/16	5	5,784.00	5,784.00	0.00	5,784.00	0.00	0.00
GENERAL	99	COMP/TECH	20284	1	SQUAD VIDEO SYSTEM	5/3/16	5	5,784.00	5,784.00	0.00	5,784.00	0.00	0.00
GENERAL	99	COMP/TECH	20285	1	SQUAD VIDEO SYSTEM	5/3/16	5	5,784.00	5,784.00	0.00	5,784.00	0.00	0.00
GENERAL	99	COMP/TECH	20286	1	SQUAD VIDEO SYSTEM	5/3/16	5	5,784.00	5,784.00	0.00	5,784.00	0.00	0.00
GENERAL	99	COMP/TECH	20287	1	SQUAD VIDEO SYSTEM	5/3/16	5	5,784.00	5,784.00	0.00	5,784.00	0.00	0.00
GENERAL	99	COMP/TECH	20288	1	SQUAD VIDEO SYSTEM	5/3/16	5	5,784.00	5,784.00	0.00	5,784.00	0.00	0.00
GENERAL	99	COMP/TECH	20289	1	SQUAD VIDEO SYSTEM	5/3/16	5	5,784.00	5,784.00	0.00	5,784.00	0.00	0.00
GENERAL	99	COMP/TECH	20290	1	SQUAD VIDEO SYSTEM	5/3/16	5	5,784.00	5,784.00	0.00	5,784.00	0.00	0.00
GENERAL	99	COMP/TECH	20291	1	SQUAD VIDEO SYSTEM	5/3/16	5	5,784.00	5,784.00	0.00	5,784.00	0.00	0.00
GENERAL	99	COMP/TECH	20292	1	SQUAD VIDEO SYSTEM	5/3/16	5	5,784.00	5,784.00	0.00	5,784.00	0.00	0.00
GENERAL	99	COMP/TECH	20293	1	SQUAD VIDEO SYSTEM	5/3/16	5	5,784.00	5,784.00	0.00	5,784.00	0.00	0.00
GENERAL	99	COMP/TECH	20294	1	SQUAD VIDEO SYSTEM	5/3/16	5	5,784.00	5,784.00	0.00	5,784.00	0.00	0.00
GENERAL	99	COMP/TECH	20295	1	SQUAD VIDEO SYSTEM	5/3/16	5	5,784.00	5,784.00	0.00	5,784.00	0.00	0.00
GENERAL	99	COMP/TECH	20778	1	SF MOBILE-VISION INC SQUAD VIDEA SYSTEM	7/16/20	5	5,253.50	1,488.49	700.47	2,188.96	0.00	3,064.54
GENERAL	99	COPIER	14094	1	Lanier LD 175 SP Digital Copier	1/26/06	5	13,732.00	13,732.00	0.00	13,732.00	0.00	0.00
GENERAL	99	COPIER	14787	1	LANIER LD040SP COPIER	9/16/08	5	6,451.75	6,451.75	0.00	6,451.75	0.00	0.00
GENERAL	99	COPIER	15512	1	RICOH AFICIO MP 8001SP COPIER - COPYROOM	1/25/11	5	11,985.00	11,985.00	0.00	11,985.00	0.00	0.00
GENERAL	99	COPIER	15900	1	TOSHIBA ESTUDIO 6560CT COLOR MULTIFUNCTION	2/17/15	5	14,182.00	14,182.00	0.00	14,182.00	0.00	0.00
GENERAL	99	OUTEQUIP	20356	1	JOHN DEERE Z950M COMMERCIAL ZTRAK	7/10/15	10	6,500.00	4,225.00	379.17	4,604.17	0.00	1,895.83
GENERAL	99	POLICE	13701	1	Astro Motorola VRS Mobile Radio	4/23/04	10	8,531.50	8,531.50	0.00	8,531.50	0.00	0.00
GENERAL	99	POLICEVEH	20275	1	SQUAD VIDEO SYSTEM	9/4/15	10	5,809.00	3,679.03	387.27	4,066.30	0.00	1,742.70
GENERAL	99	POLICEVEH	20276	1	SQUAD VIDEO SYSTEM	9/4/15	10	5,809.00	3,679.03	387.27	4,066.30	0.00	1,742.70
GENERAL	99	POLICEVEH	20277	1	SQUAD VIDEO SYSTEM	9/4/15	10	5,809.00	3,679.03	387.27	4,066.30	0.00	1,742.70
GENERAL	99	RADIO	01474	1	60' Radio Tower W/6-25' Fiberglass Anten	7/1/89	10	6,000.00	6,000.00	0.00	6,000.00	0.00	0.00
GENERAL	99	RADIO	2025	1	T99Dx Astro Digital Spectra Mobile Radio	10/4/02	10	7,585.75	7,585.75	0.00	7,585.75	0.00	0.00
GENERAL	99	RADIO	2026	1	T99Dx Astro Digital Spectra Mobile Radio	10/30/02	10	7,585.75	7,585.75	0.00	7,585.75	0.00	0.00
GENERAL	99	SNOBRDGS	12419	1	WHITMORE - SNOWMOBILE BRIDGE	6/30/94	25	39,000.00	39,000.00	0.00	39,000.00	0.00	0.00

LAND SERVICES	12	DAMS	15359	1	MOON LAKE DAM	12/31/10	40	249,606.06	68,641.65	6,240.15	74,881.80	0.00	174,724.26
LAND SERVICES	12	ENGINRG	11375	1	LEICA TCRA1103 PLUS-TRUCK/CATLON	1/1/04	10	31,099.00	31,099.00	0.00	31,099.00	0.00	0.00
LAND SERVICES	12	ENGINRG	13942	1	TOPCON GPS-HAND HELD - CABINET	1/24/08	10	5,695.25	5,695.25	0.00	5,695.25	0.00	0.00
LAND SERVICES	12	ENGINRG	13942	2	TOPCON GPS-HAND HELD - CABINET	5/4/09	10	1,110.00	1,110.00	0.00	1,110.00	0.00	0.00
LAND SERVICES	12	ENGINRG	20160	1	CS20 GNSS CONTROLLER	1/15/17	10	5,780.00	2,890.00	578.00	3,468.00	0.00	2,312.00
LAND SERVICES	12	ENGINRG	20161	1	GS16 GNSS ANTENNA	1/15/17	10	13,003.81	6,501.90	1,300.38	7,802.28	0.00	5,201.53
LAND SERVICES	12	ENGINRG	20561	1	GS 16 GNSS ANTENNA	3/8/18	10	13,437.00	5,150.85	1,343.70	6,494.55	0.00	6,942.45
LAND SERVICES	12	LANIMPGRN	06323	1	BLACKTOP AT SWCD SHED	11/28/08	30	10,312.95	4,497.66	343.77	4,841.43	0.00	5,471.52
LAND SERVICES	12	LANIMPGRN	06324	1	CONCRETE AT SWCD SHED	5/19/09	30	6,084.92	2,652.28	202.83	2,755.11	0.00	3,329.81
LAND SERVICES	12	LTRUCKS	20343	1	2018 CHEVROLET SILVERADO	9/11/17	5	35,011.33	30,343.17	4,668.16	35,011.33	0.00	0.00
LAND SERVICES	12	SOIL	12469	1	B/C SOIL SURVEY	6/30/87	30	90,000.00	90,000.00	0.00	90,000.00	0.00	0.00
PROGRAM ON AGING	22	CARS	15349	1	2011 FORD FUSION	12/13/10	5	17,304.50	17,304.50	0.00	17,304.50	0.00	0.00
PROGRAM ON AGING	22	CARS	15376	1	2012 DODGE CARAVAN	5/17/12	5	21,062.00	21,062.00	0.00	21,062.00	0.00	0.00
PROGRAM ON AGING	22	CARS	20232	1	2015 FORD FUSION	11/20/14	5	17,883.00	17,883.00	0.00	17,883.00	0.00	0.00
PROGRAM ON AGING	22	CARS	20381	1	2016 MV1 VAN	1/30/17	5	46,882.00	46,100.63	781.37	46,882.00	0.00	0.00
PROGRAM ON AGING	22	CARS	20468	1	2018 RED DODGE VAN	4/16/18	5	31,651.00	23,210.73	6,330.20	29,540.93	0.00	2,110.07
PROGRAM ON AGING	22	CARS	20472	1	2018 STARCRAFT WHITE BUS	6/20/18	5	38,438.18	26,906.74	7,687.64	34,594.38	0.00	3,843.80
PROGRAM ON AGING	22	CARS	20473	1	2018 DODGE GRAND CARAVAN	7/30/18	5	16,938.13	24,787.50	4,957.50	21,895.63	0.00	2,891.87
PROGRAM ON AGING	22	CARS	20474	1	2018 FORD FOCUS SE - MOW	12/18/18	5	17,627.50	10,576.50	3,525.50	14,102.00	0.00	3,525.50
PROGRAM ON AGING	22	CARS	20475	1	2019 DODGE CARAVAN	2/22/19	5	37,357.00	21,168.97	7,471.40	28,640.37	0.00	8,716.63
PROGRAM ON AGING	22	CARS	20726	1	2019 DODGE GRAND CARAVAN	4/8/20	5	37,949.00	13,282.15	7,589.80	20,871.95	0.00	17,077.05
PROGRAM ON AGING	22	CARS	20727	1	2020 CHEVROLET EQUINOX LS	8/27/20	5	22,223.00	5,926.13	4,444.60	10,370.73	0.00	11,852.27
PROGRAM ON AGING	22	LTRUCKS	15392	1	2014 DODGE CARAVAN	10/24/14	5	30,980.00	30,980.00	0.00	30,980.00	0.00	0.00
PROGRAM ON AGING	22	OUTEQUIP	21017	1	ADRC RECEPTION REMODEL	4/15/21	5	5,683.60	852.54	1,136.72	1,989.26	0.00	3,694.34
RECYCLING CENTER	35	BLDG	12444	1	RECYCLING CENTER BUILDING	6/30/92	40	577,405.00	425,836.29	14,435.13	440,271.42	0.00	137,133.58
RECYCLING CENTER	35	ENGINRG	06431	1	Global Horizontal Baler	5/12/92	10	31,798.00	31,798.00	0.00	31,798.00	0.00	0.00
RECYCLING CENTER	35	HEAVY	05441	1	Fork Lift	12/31/92	10	9,000.00	9,000.00	0.00	9,000.00	0.00	0.00
RECYCLING CENTER	35	HEAVY	05443	1	Slide Bed Conveyors	12/31/92	10	68,000.00	68,000.00	0.00	68,000.00	0.00	0.00
RECYCLING CENTER	35	HEAVY	13542	1	Recycling Box	8/31/04	5	5,995.00	5,995.00	0.00	5,995.00	0.00	0.00
RECYCLING CENTER	35	HTRUCKS	10105	1	1995 International Truck	2/28/96	10	66,500.00	66,500.00	0.00	66,500.00	0.00	0.00
RECYCLING CENTER	35	HTRUCKS	13851	1	2006 DODGE TRUCK & PLOW	12/26/06	10	33,859.50	33,859.50	0.00	33,859.50	0.00	0.00
RECYCLING CENTER	35	HTRUCKS	20943	1	2021 FREIGHTLINER 122SD	5/11/21	10	174,132.50	11,608.83	17,413.25	29,022.08	0.00	145,110.42
RECYCLING CENTER	35	LANIMPSTR	21024	1	CHETEK RECYCLING SITE	1/4/21	20	7,834.43	391.72	391.72	783.44	0.00	7,050.99
RECYCLING CENTER	35	OUTEQUIP	15180	1	ROLLOFF CONTAINER	4/21/10	10	5,100.00	5,100.00	0.00	5,100.00	0.00	0.00
RECYCLING CENTER	35	OUTEQUIP	15181	1	ROLLOFF CONTAINER	4/21/10	10	5,100.00	5,100.00	0.00	5,100.00	0.00	0.00
RECYCLING CENTER	35	OUTEQUIP	15182	1	ROLLOFF CONTAINER	4/21/10	10	5,100.00	5,100.00	0.00	5,100.00	0.00	0.00
RECYCLING CENTER	35	OUTEQUIP	15260	1	YALE FORK LIFT	5/20/10	10	13,437.50	13,437.50	0.00	13,437.50	0.00	0.00
RECYCLING CENTER	35	OUTEQUIP	15261	1	YALE FORK LIFT	5/20/10	10	13,437.50	13,437.50	0.00	13,437.50	0.00	0.00
RECYCLING CENTER	35	OUTEQUIP	15263	1	DROP BOX CONTAINER	6/30/10	10	6,450.00	6,450.00	0.00	6,450.00	0.00	0.00
RECYCLING CENTER	35	OUTEQUIP	15264	1	DROP BOX CONTAINER	6/30/10	10	6,450.00	6,450.00	0.00	6,450.00	0.00	0.00
RECYCLING CENTER	35	OUTEQUIP	15287	1	30 YD x 22 FT ROLLOFF CONTAINER	4/17/12	10	5,005.00	4,838.17	166.83	5,005.00	0.00	0.00
RECYCLING CENTER	35	OUTEQUIP	15491	1	24FT DROP BOX CONTAINER - PAPER	7/9/12	10	6,450.00	6,127.50	322.50	6,450.00	0.00	0.00
RECYCLING CENTER	35	OUTEQUIP	15492	1	24FT DROP BOX CONTAINER	7/3/12	10	6,450.00	6,127.50	322.50	6,450.00	0.00	0.00
RECYCLING CENTER	35	OUTEQUIP	15494	1	24FT DROP BOX CONTAINER	9/1/12	10	6,450.00	6,020.00	430.00	6,450.00	0.00	0.00
RECYCLING CENTER	35	OUTEQUIP	15495	1	24FT DROP BOX CONTAINER	9/1/12	10	6,450.00	6,020.00	430.00	6,450.00	0.00	0.00
RECYCLING CENTER	35	OUTEQUIP	15496	1	24FT DROP BOX CONTAINER	9/1/12	10	6,450.00	6,020.00	430.00	6,450.00	0.00	0.00
RECYCLING CENTER	35	OUTEQUIP	15498	1	24FT DROP BOX CONTAINER	9/13/12	10	6,450.00	6,020.00	430.00	6,450.00	0.00	0.00
RECYCLING CENTER	35	OUTEQUIP	20331	1	24FT 32 YD DROP BOX CONTAINER	10/9/15	10	7,325.00	4,578.13	732.50	5,310.63	0.00	2,014.37
RECYCLING CENTER	35	OUTEQUIP	20332	1	24FT 32 YD DROP BOX CONTAINER	10/9/15	10	7,325.00	4,578.13	732.50	5,310.63	0.00	2,014.37
RECYCLING CENTER	35	OUTEQUIP	20333	1	24FT 32YD DROP BOX	10/30/15	10	6,775.00	4,177.92	677.50	4,855.42	0.00	1,919.58
RECYCLING CENTER	35	OUTEQUIP	20334	1	24FT 33 YD DROP BOX	12/15/15	10	6,775.00	4,121.46	677.50	4,798.96	0.00	1,976.04
RECYCLING CENTER	35	OUTEQUIP	20338	1	2 AXLE ROLL-OFF TRAILER	7/1/16	10	24,326.00	12,771.15	2,432.60	15,203.75	0.00	9,122.25
RECYCLING CENTER	35	OUTEQUIP	20924	1	22x30YD DROP BOX CONTAINER	9/28/20	10	7,800.00	975.00	780.00	1,755.00	0.00	6,045.00
RECYCLING CENTER	35	OUTEQUIP	20925	1	22x30YD DROP BOX CONTAINER	9/28/20	10	7,800.00	975.00	780.00	1,755.00	0.00	6,045.00
RECYCLING CENTER	35	OUTEQUIP	20926	1	22x30YD DROP BOX CONTAINER	9/28/20	10	7,800.00	975.00	780.00	1,755.00	0.00	6,045.00
RECYCLING CENTER	35	OUTEQUIP	21015	1	22x30YD DROP BOX	1/20/21	10	7,956.00	729.30	795.60	1,524.90	0.00	6,431.10
RECYCLING CENTER	35	OUTEQUIP	21016	1	22x30YD DROP BOX	1/20/21	10	7,956.00	729.30	795.60	1,524.90	0.00	6,431.10
SHERIFFS DEPARTMENT	16	ATV	20624	1	2019 POLARIS 800 INDY	9/5/18	5	12,429.00	8,286.00	2,485.80	10,771.80	0.00	1,657.20
SHERIFFS DEPARTMENT	16	ATV	20625	1	2019 POLARIS 800 INDY	9/5/18	5	12,429.00	8,286.00	2,485.80	10,771.80	0.00	1,657.20
SHERIFFS DEPARTMENT	16	BLDG	13638	1	Justice Center Building	6/1/04	40	17,624,929.00	7,747,624.95	440,623.22	8,188,248.17	0.00	9,436,680.83

UW BARRON COUNTY CAMPUS	28	ROADSBLK	12458	1	UW B/C BLACKTOP SERVICE ROADS	11/1/03	25	17,136.00	12,452.16	685.44	13,137.60	0.00	3,998.40
UW BARRON COUNTY CAMPUS	28	ROOF	12435	1	UW B/C ROOF-LIBRARY & FINE ARTS BLDG	6/30/84	20	85,000.00	85,000.00	0.00	85,000.00	0.00	0.00
UW BARRON COUNTY CAMPUS	28	ROOF	12439	1	UW B/C ROOF RESTORATION	6/30/87	20	94,350.00	94,350.00	0.00	94,350.00	0.00	0.00
UW BARRON COUNTY CAMPUS	28	ROOF	12453	1	UW B/C MEGGERS HALL ROOF REPLACE & REPAIR	6/30/00	20	52,792.00	52,792.00	0.00	52,792.00	0.00	0.00
UW BARRON COUNTY CAMPUS	28	ROOF	12454	1	BLEACHER REPAIRS & ROOF REPLACEMENT & BLDG IMPRV	6/30/02	20	61,838.00	60,292.05	1,545.95	61,838.00	0.00	0.00
UW BARRON COUNTY CAMPUS	28	ROOF	12550	1	ADA door openers & re-roof Meggers Hall	10/19/01	20	34,939.33	34,939.33	0.00	34,939.33	0.00	0.00
UW BARRON COUNTY CAMPUS	28	ROOF	13636	1	New Roof Fine Arts Bldg	8/19/04	20	29,419.09	25,496.47	1,470.95	26,967.42	0.00	2,451.67
UW BARRON COUNTY CAMPUS	28	ROOF	13771	1	Gym Roof	9/26/05	20	44,273.00	35,971.81	2,213.65	38,185.46	0.00	6,087.54
UW BARRON COUNTY CAMPUS	28	ROOF	13778	1	New Roof Student Center	10/16/06	20	44,628.30	33,843.20	2,231.42	36,074.62	0.00	8,553.68
UW BARRON COUNTY CAMPUS	28	ROOF	13904	1	Roof only portion of UW Master Plan Expansion	9/1/06	20	119,000.00	91,233.33	5,950.00	97,183.33	0.00	21,816.67
UW BARRON COUNTY CAMPUS	28	ROOF	15005	1	ROOF-NORTH GYM & UPPER FINE ARTS BLDG	10/12/07	20	61,519.01	43,832.29	3,075.95	46,908.24	0.00	14,610.77
UW BARRON COUNTY CAMPUS	28	SEALCOAT	12447	1	UW B/C SEAL COAT PARKING LOTS	6/30/97	10	10,590.00	10,590.00	0.00	10,590.00	0.00	0.00
UW BARRON COUNTY CAMPUS	28	TEL	13905	1	Communications Equip as part of Master Plan	9/1/06	10	6,060.00	6,060.00	0.00	6,060.00	0.00	0.00
Sum:								139,390,495.68	727,424,447.2	3,985,114.11	76,727,561.31	8,839,971.93	53822962.44

COUNTY OF BARRON

Payment Request Edit
 On-Line Vouchers
 SOLID WASTE

Vendor No/Name	Line#	voucher#	Account Desc	Date	Description	Amount
509 VIKING ELECTRIC SUPPLY INC	1	703210	MERF CAPITAL IMPROVE - AGRS	05/10/23	Black 3AWG THHN cut to 50 feet	139.35
509 VIKING ELECTRIC SUPPLY INC	1	703210	MERF CAPITAL IMPROVE - AGRS	05/10/23	White 3AWG THHN cut to 50 feet	69.67
509 VIKING ELECTRIC SUPPLY INC	1	703210	MERF CAPITAL IMPROVE - AGRS	05/10/23	Green 8AWG THHN cut to 50 feet	23.46
509 VIKING ELECTRIC SUPPLY INC	1	703210	MERF CAPITAL IMPROVE - AGRS	05/10/23	1 1/4 EMT 90 degree elbow	41.94
509 VIKING ELECTRIC SUPPLY INC	1	703210	MERF CAPITAL IMPROVE - AGRS	05/10/23	1 1/4 Conduit LB	113.92
748 MC MASTER CARR SUPPLY COMPANY	1	703211	REPAIR & MAINT SUPPLIES	05/10/23	loader ram gland cap screws (pa	18.52
748 MC MASTER CARR SUPPLY COMPANY	1	703211	REPAIR & MAINT SUPPLIES	05/10/23	1/8 inch pipe couplings	35.40
748 MC MASTER CARR SUPPLY COMPANY	1	703211	REPAIR & MAINT SUPPLIES	05/10/23	2 inch hose barb connector	18.40
748 MC MASTER CARR SUPPLY COMPANY	1	703211	MERF CAPITAL IMPROVE - AGRS	05/10/23	4 inch threaded SS pipe flange	194.09
748 MC MASTER CARR SUPPLY COMPANY	1	703211	MERF CAPITAL IMPROVE - AGRS	05/10/23	4 inch pipe size 8 inch long SS	114.62
748 MC MASTER CARR SUPPLY COMPANY	1	703211	MERF CAPITAL IMPROVE - AGRS	05/10/23	4 inch pipe size SS blank flang	192.42
748 MC MASTER CARR SUPPLY COMPANY	1	703211	MERF CAPITAL IMPROVE - AGRS	05/10/23	1 1/4 EMT to box adapter	127.80
748 MC MASTER CARR SUPPLY COMPANY	1	703211	MERF CAPITAL IMPROVE - AGRS	05/10/23	shipping	22.63
09 LINDE GAS & EQUIPMENT INC	1	703212	REPAIR & MAINT SUPPLIES	05/10/23	gas and equipment	147.85
3193 MENARDS - RICE LAKE STORE	1	703213	OFFICE SUPPLIES	05/10/23	OFFICE SUPPLIES	29.17
3193 MENARDS - RICE LAKE STORE	1	703213	REPAIR & MAINT BUILDINGS	05/10/23	REPAIR AND MAINTENANCE BUILDING	35.98
3193 MENARDS - RICE LAKE STORE	1	703213	REPAIR & MAINT SUPPLIES	05/10/23	repair maint. supplies	50.72
3193 MENARDS - RICE LAKE STORE	1	703213	TOOLS	05/10/23	TOOLS	75.20
3193 MENARDS - RICE LAKE STORE	1	703213	REPAIR & MAINT SUPPLIES	05/10/23	REBATE	-78.00
4237 MACARTHUR CO.	1	703214	REPAIR & MAINT SUPPLIES	05/10/23	GLR1000-HD 1 inch rope gasket(B	226.50
7586 SYNERGY COOPERATIVE	1	703215	FUEL - VEHICLES	05/10/23	fuel for vehicles	60.00
7586 SYNERGY COOPERATIVE	1	703216	PROPANE	05/10/23	LP tanks	55.81
0613 GOODIN COMPANY	1	703217	REPAIR & MAINT EQUIPMENT	05/10/23	BSTG Exhaust Isolation Valve	1,714.71
5138 WATERSURPLUS/SURPLUS MANAGEMENT I	1	703218	WATER TREATMENT	05/10/23	Strong acid Cation Resin (cu/ft	3,476.00
5138 WATERSURPLUS/SURPLUS MANAGEMENT I	1	703218	WATER TREATMENT	05/10/23	Strong Base Anion Resin type 1	6,072.00
5138 WATERSURPLUS/SURPLUS MANAGEMENT I	1	703218	WATER TREATMENT	05/10/23	12X40 mesh Carbon (cu/ft)	1,090.00
5138 WATERSURPLUS/SURPLUS MANAGEMENT I	1	703218	WATER TREATMENT	05/10/23	shipping	654.76
0714 HUEBSCH SERVICES	1	703219	UNIFORMS	05/17/23	uniforms	170.33
0714 HUEBSCH SERVICES	1	703219	UNIFORMS	05/17/23	uniforms	340.68
0714 HUEBSCH SERVICES	1	703220	UNIFORMS	05/17/23	uniforms	164.75
0714 HUEBSCH SERVICES	1	703220	UNIFORMS	05/17/23	uniforms	329.52
277 GRAINGER	1	703221	MERF CAPITAL IMPROVE - AGRS	05/17/23	Breaker Panel	474.24
277 GRAINGER	1	703221	MERF CAPITAL IMPROVE - AGRS	05/17/23	Breaker panel cover	50.60
277 GRAINGER	1	703221	MERF CAPITAL IMPROVE - AGRS	05/17/23	20 amp breaker	128.76
277 GRAINGER	1	703221	MERF CAPITAL IMPROVE - AGRS	05/17/23	20 amp 2 pole breaker	50.99
277 GRAINGER	1	703221	MERF CAPITAL IMPROVE - AGRS	05/17/23	30 amp breaker	25.27
7217 GREEN SQUAD RECYCLING	1	703222	WASTE BY-PASS	05/17/23	MATTRESS OUT	960.00
0963 DEMO PLUS INC	1	703223	REPAIR & MAINT SUPPLIES	05/17/23	UNI-Ram BLU 55# boxes sold per	3,234.00
0963 DEMO PLUS INC	1	703223	REPAIR & MAINT SUPPLIES	05/17/23	UNI- CAST LW-35G 40/35# bags so	1,596.00
3402 PAULUS MOBILE STORAGE LLC	1	703224	EQUIPMENT LEASE	05/17/23	equipment lease	140.00
5771 SWEETWATER SANITATION SERVICE	1	703225	WATER & SEWER	05/17/23	sewer and water	1,880.40

COUNTY OF BARRON

Payment Request Edit

On-Line Vouchers

SOLID WASTE

<u>Vendor No/Name</u>	<u>Line#</u>	<u>voucher#</u>	<u>Account Desc</u>	<u>Date</u>	<u>Description</u>	<u>Amount</u>
2177 PAUL'S APPLIANCES	1	703226	E-WASTE	05/17/23	APPLIANCE OUT GOING	300.00
09 LINDE GAS & EQUIPMENT INC	1	703227	REPAIR & MAINT - CEMS	05/17/23	gas and equipment	1,492.77
15 MAYO CLINIC HEALTH SYSTEM-NORTHLA	1	703228	EMPLOYEE PHYSICALS	05/17/23	EMPLOYEE PHYSICAL	30.00
3745 REPUBLIC SERVICES INC	1	703229	WASTE BY-PASS	05/17/23	BYPASS	7,546.36
Totals:						33,637.59

Dept Approval

Admin Approval